

PROBLEMS

IN CHESS.

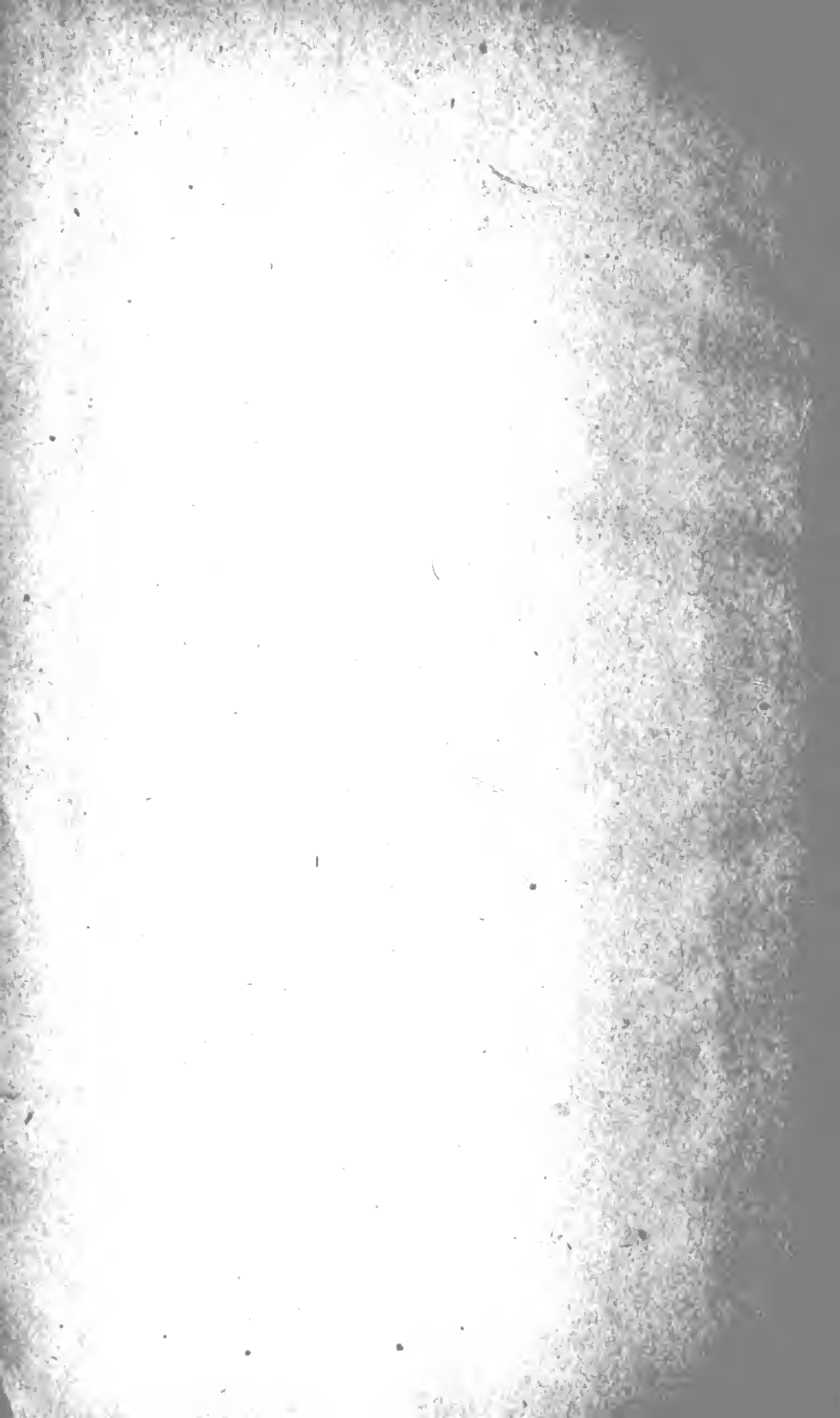
GV
1451
W68

LIBRARY OF CONGRESS.

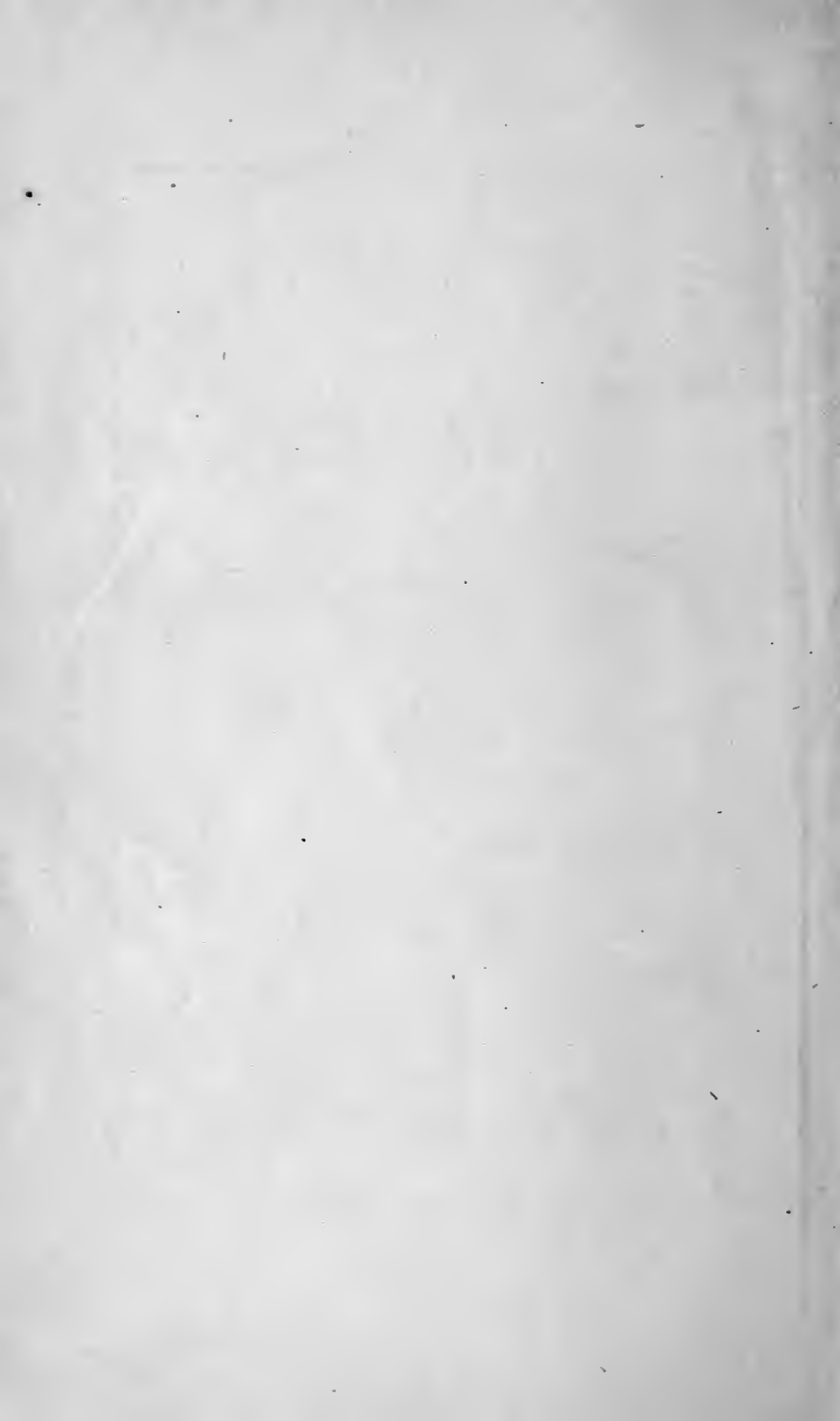
GV 1451
Chap. Copyright No.

Shelf. W68

UNITED STATES OF AMERICA.







PROBLEMS

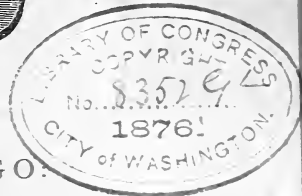
IN

CHESS.

✓
By JOHN WILKINSON.



15, 18



CHICAGO:

1876.

U

GV 1451
.W68.

Entered according to Act of Congress, in the year 1876, by
JOHN WILKINSON,
In the Office of the Librarian of Congress at Washington.

HOW IT HAPPENED.

Five years ago the composer of these problems was the possessor of a small printing press. He had some chess type, and was urged by friends to print a small book of his problems for private distribution. The idea seemed a good one, and he thought it would be a pleasant task to set up and print the book himself. So the paper for a hundred copies was bought, and the first sixteen pages were printed. At this point the great Fire occurred, and in a hurried removal, many of his scrap-books containing copies of the problems were lost. Afterwards the matter was dropped until in the fall of 1875 a copy of "American Chess Nuts" happened to fall in his way. This was found to contain about forty of his lost problems, and he decided to go on and complete the book. And here his friends have the result.

The greater part of them were originally printed in various chess papers and magazines, between 1858 and 1861, under his own name and various noms de plume. Quite a number of four, five and six moves have been omitted for the reason that the solutions have been lost, and the writer is now unable to solve them, either through decay of chess knowledge, consequent upon fifteen years cessation from all familiarity with the game, or because the positions are faulty.

He does not think they are very remarkable problems, or that the ideas are strikingly original, for he must be modest even at the expense of truth. He presents them to his friends as he would a photograph of his children, trusting that, with all their faults, they will have a kindly greeting.

JOHN WILKINSON.

Chicago, June, 1876.

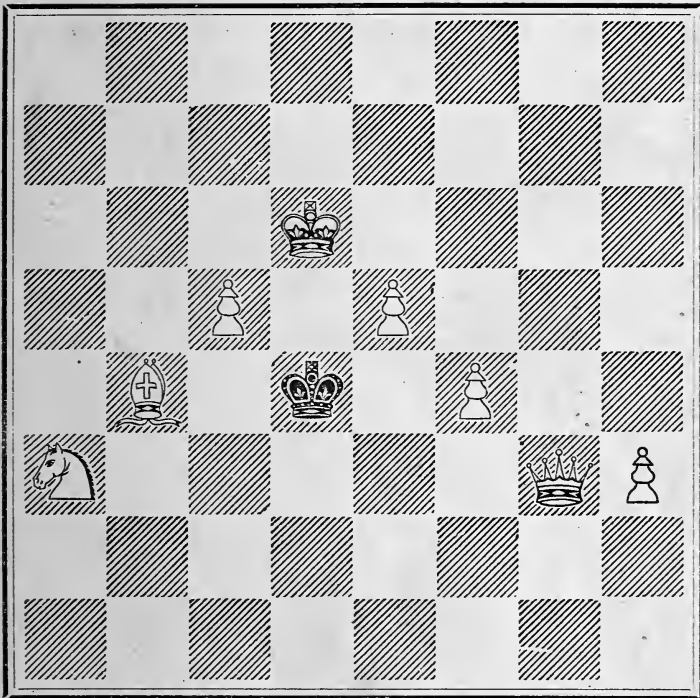
P. S. —Notice “A few words of advice,” on page 141.

Problems in Chess.

I

PROBLEM I.

BLACK.



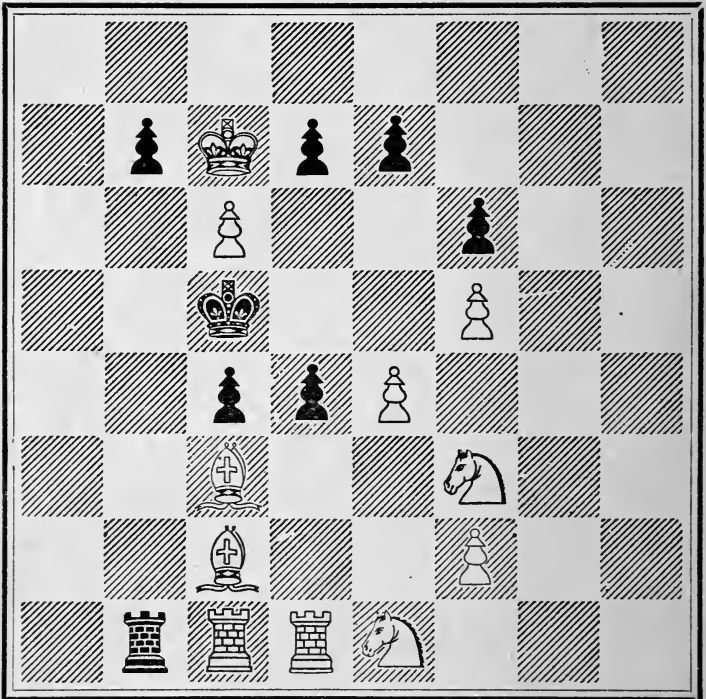
WHITE.

White to play, and mate in Three moves.

Problems

PROBLEM II.

BLACK.

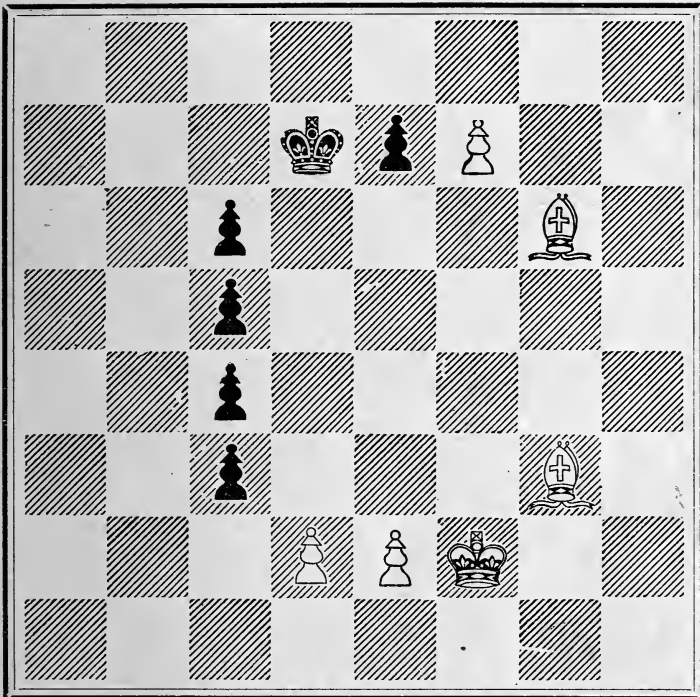


WHITE.

White to play, and mate in Three moves.

PROBLEM III.

BLACK.



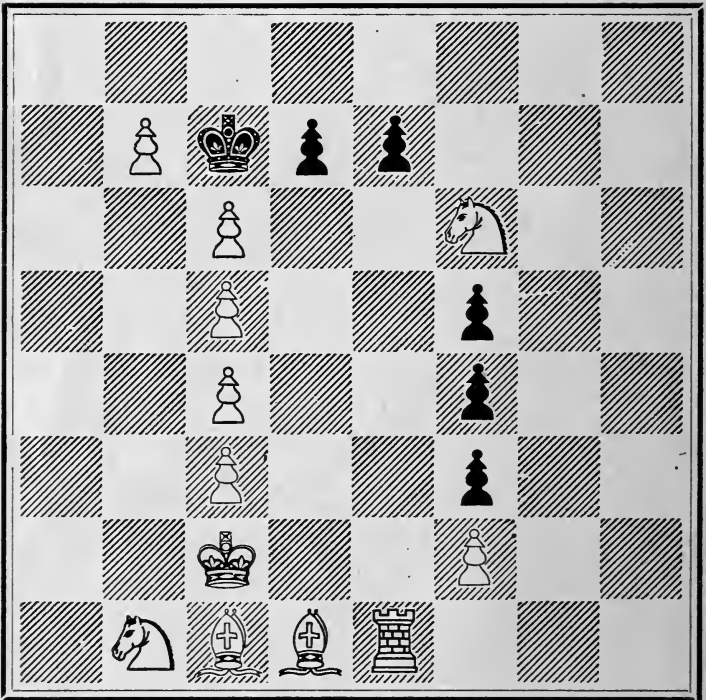
WHITE.

White to play, and mate in Three moves.

Problems

PROBLEM IV.

BLACK.

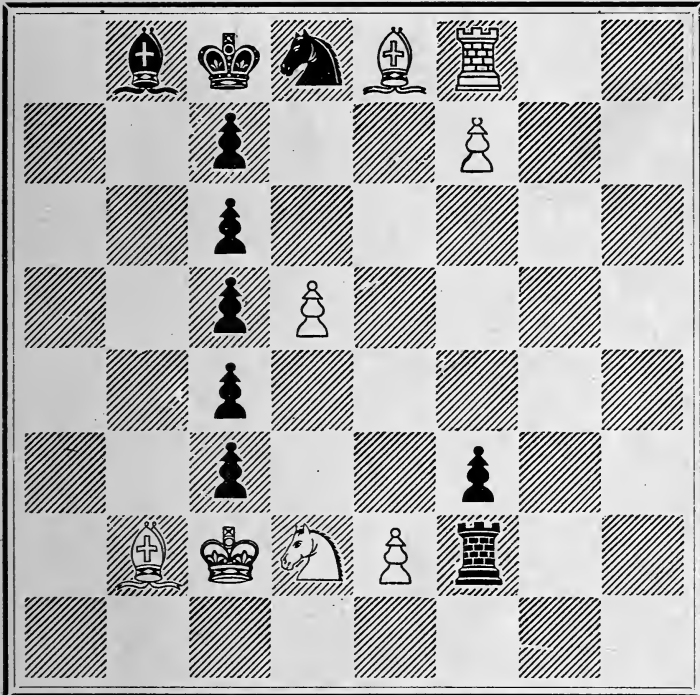


WHITE.

White to play, and mate in Three moves.

PROBLEM V.

BLACK.

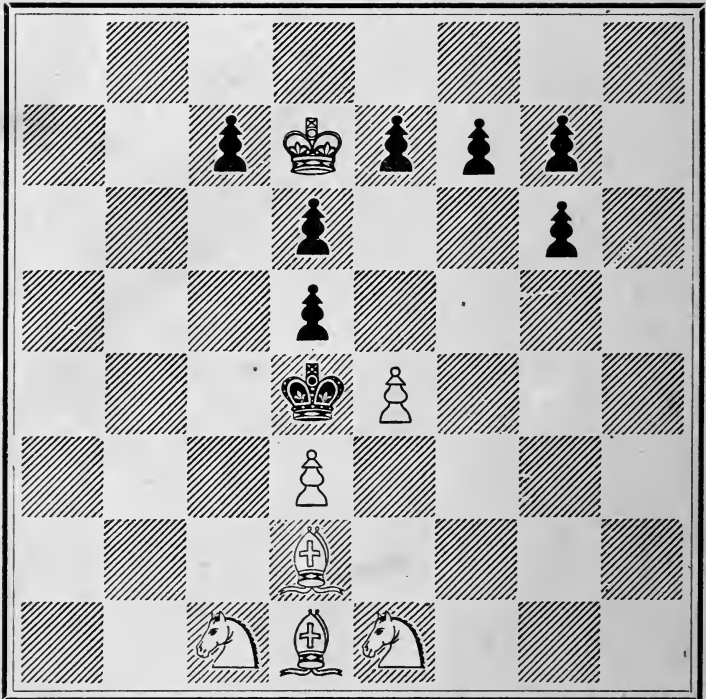


WHITE.

White to play, and mate in Three moves.

PROBLEM VI.

BLACK.

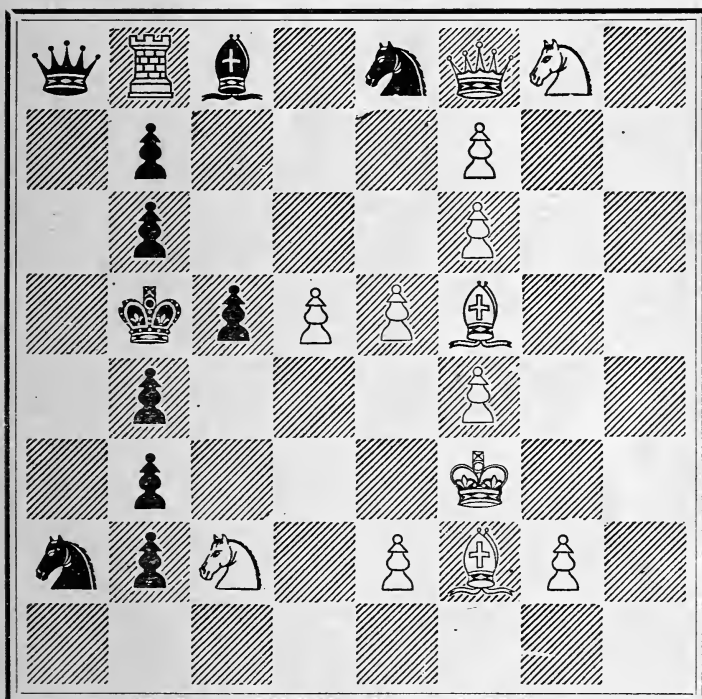


WHITE.

White to play, and mate in Three moves.

PROBLEM VII.

BLACK.

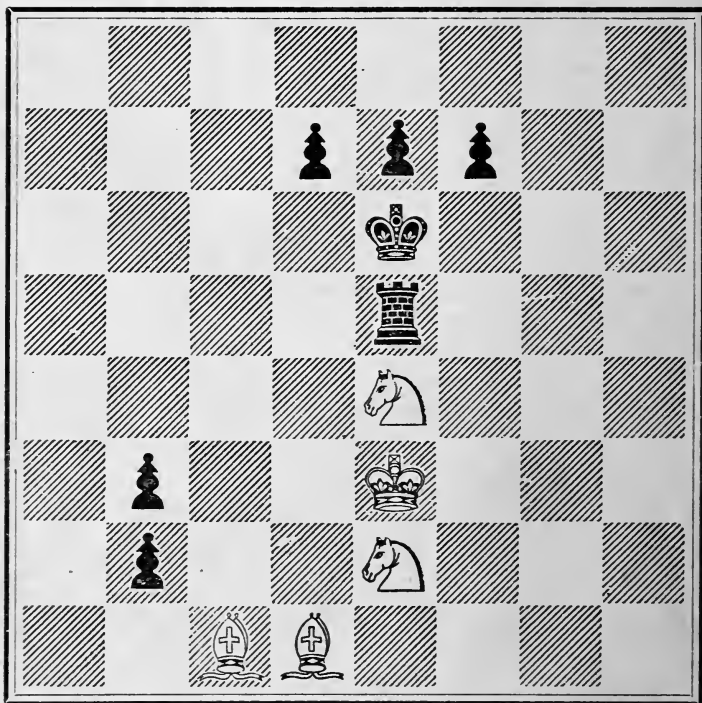


WHITE.

White to play, and mate in Three moves.

PROBLEM VIII.

BLACK.

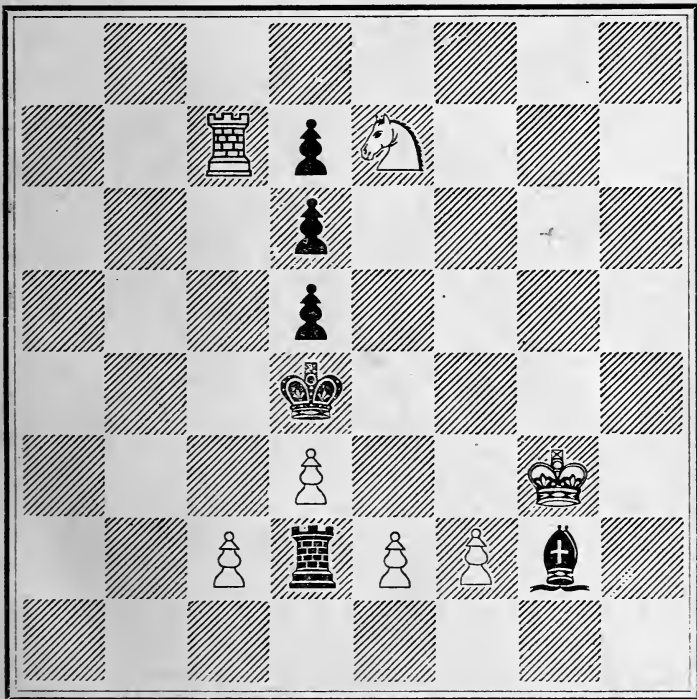


WHITE.

White to play, and mate in Two moves.

PROBLEM IX.

BLACK.



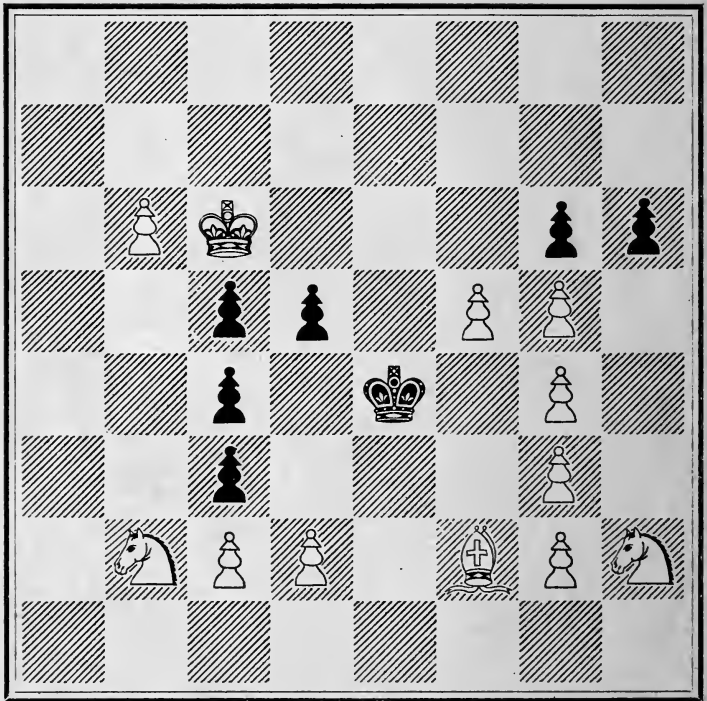
WHITE.

White to play, and mate in Two moves.

Problems

PROBLEM X.

BLACK.

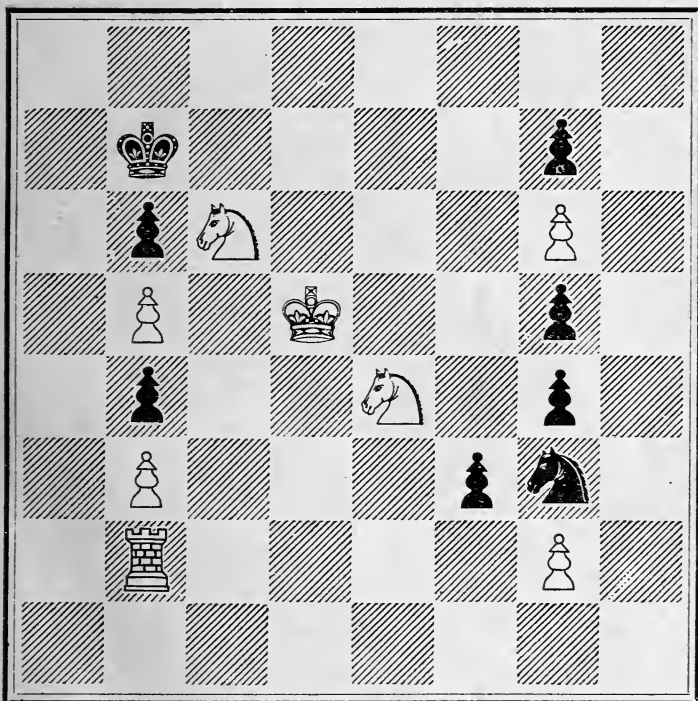


WHITE.

White to play, and mate in Three moves.

PROBLEM XI.

BLACK.

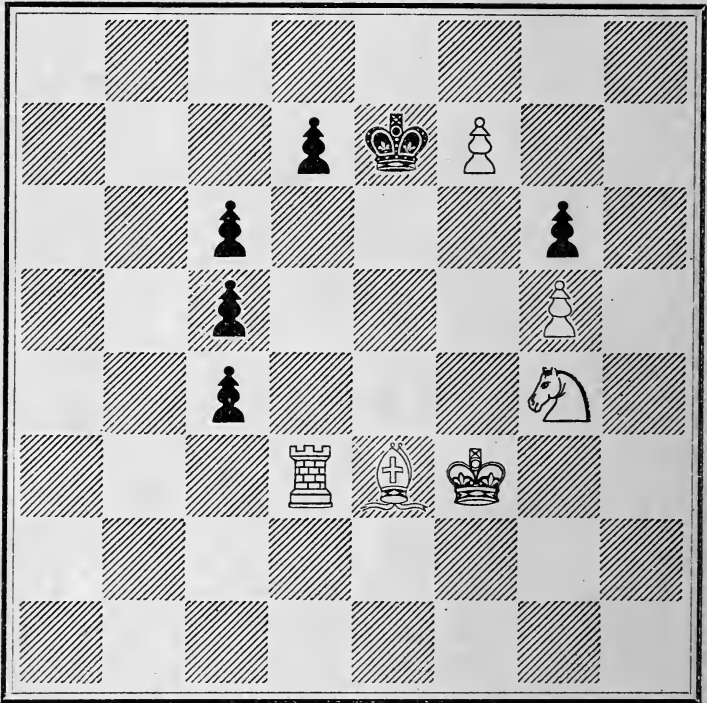


WHITE.

White to play, and mate in Three moves.

PROBLEM XII.

BLACK.

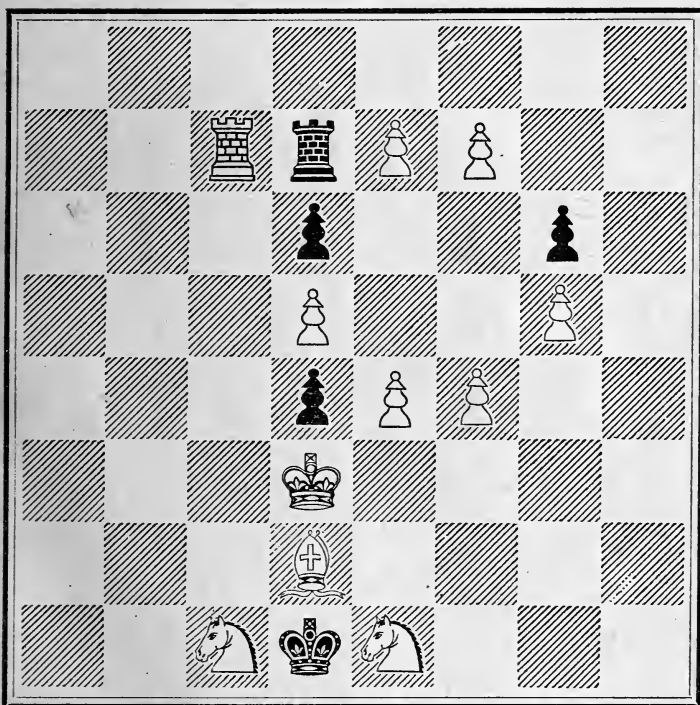


WHITE.

White to play, and mate in Four moves.

PROBLEM XIII.

BLACK.

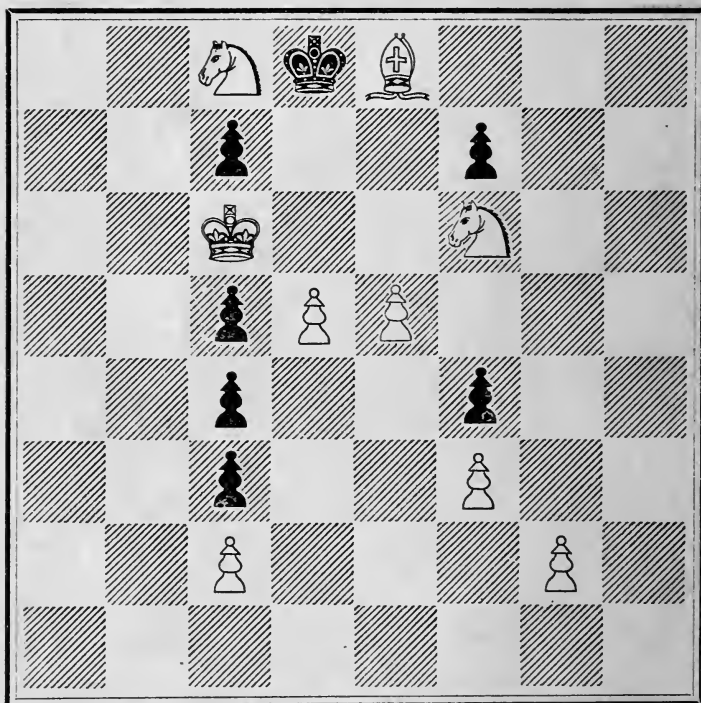


WHITE.

White to play, and mate in Three moves.

PROBLEM XIV.

BLACK.

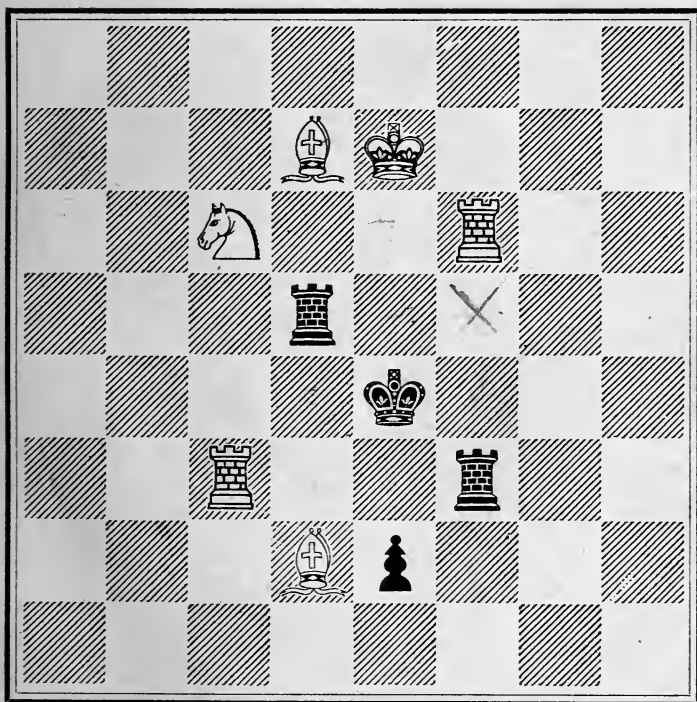


WHITE.

White to play, and mate in Four moves.

PROBLEM XV.

BLACK.

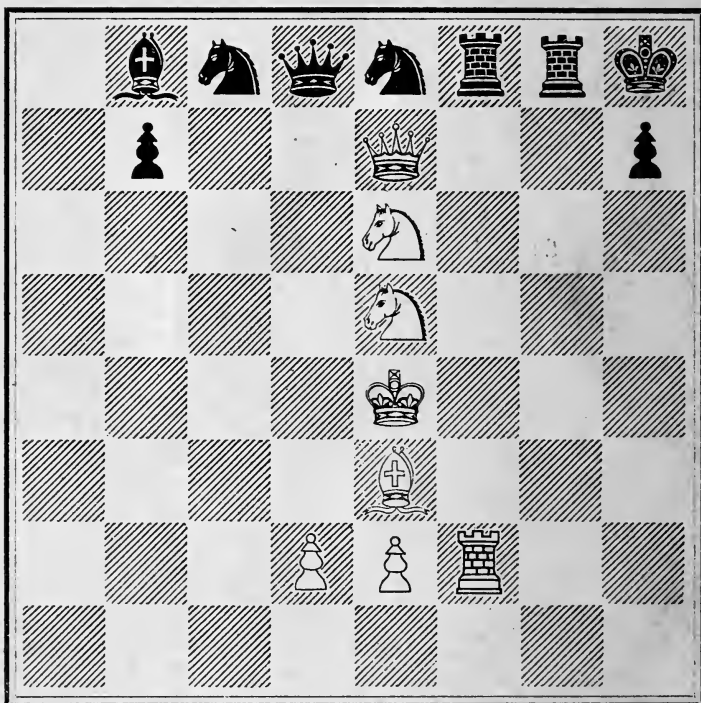


WHITE.

White to play, and mate in Two moves.

PROBLEM XVI.

BLACK.

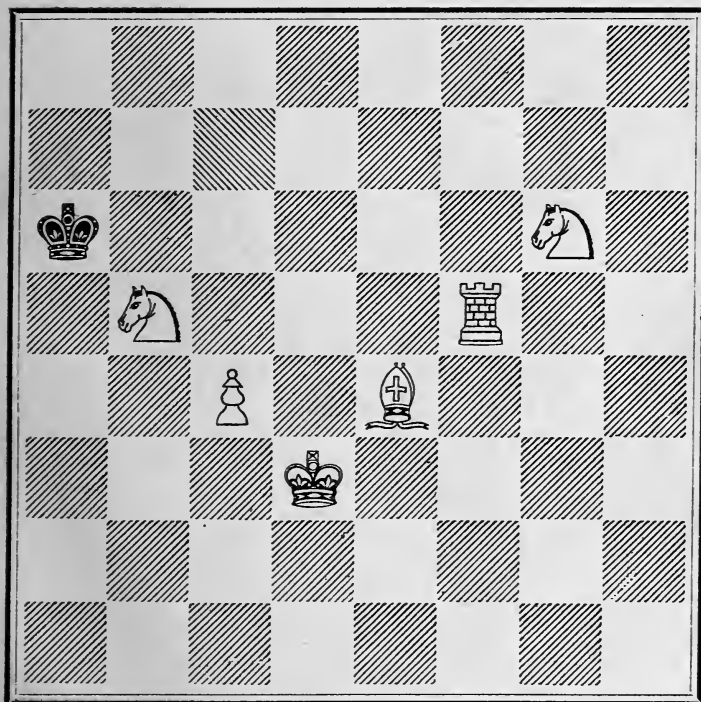


WHITE.

White to play, and mate in Three moves.

PROBLEM XVII.

BLACK.

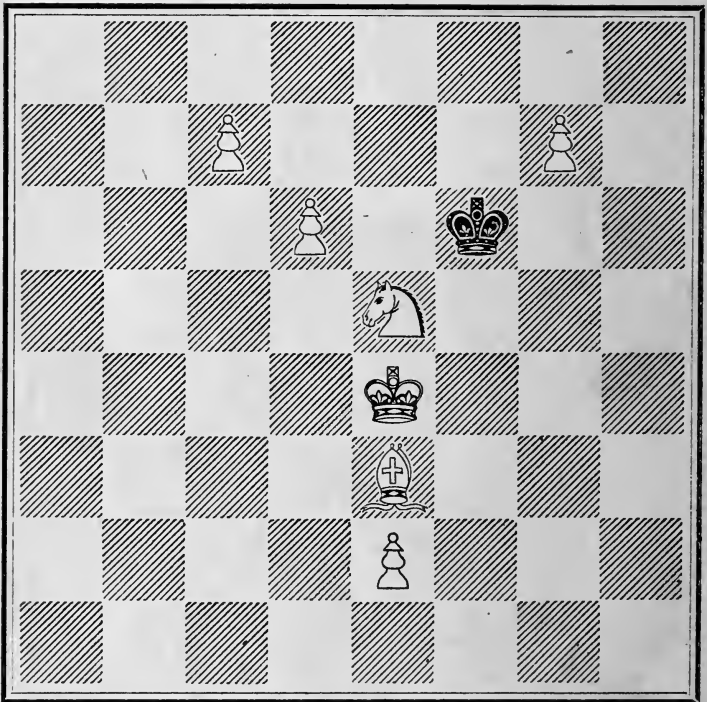


WHITE.

White to play, and mate in Three moves.

PROBLEM XVIII.

BLACK.

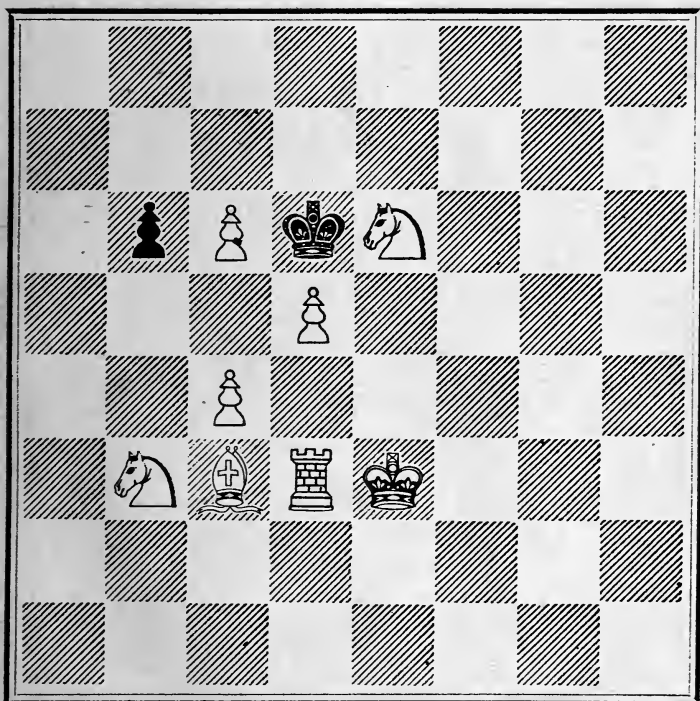


WHITE.

White to play, and mate in Two moves.

PROBLEM XIX.

BLACK:

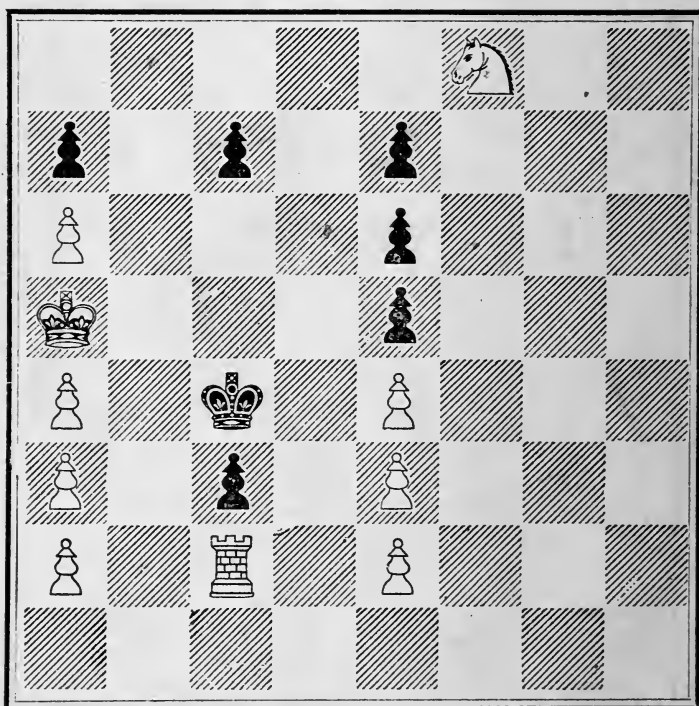


WHITE.

White to play, and mate in Two moves.

PROBLEM XX.

BLACK.

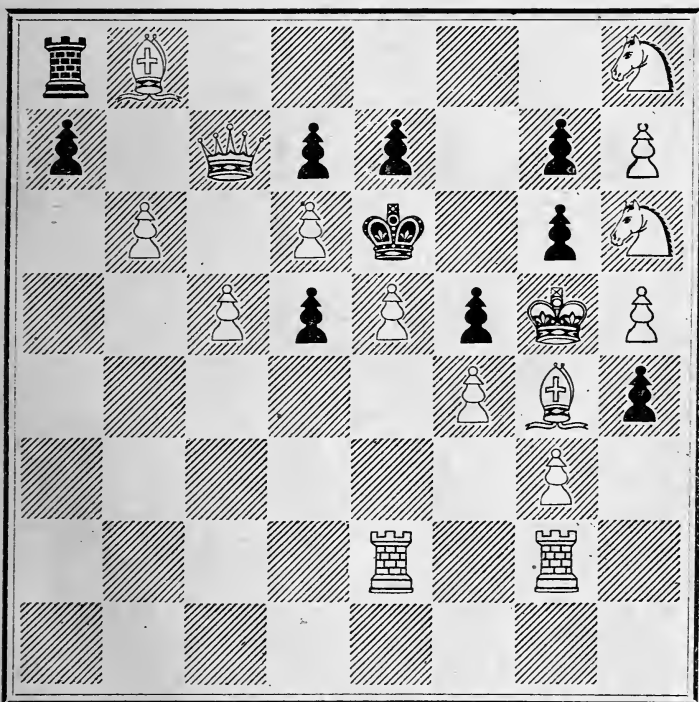


WHITE.

White to play, and mate in Three moves.

PROBLEM XIX.

BLACK.

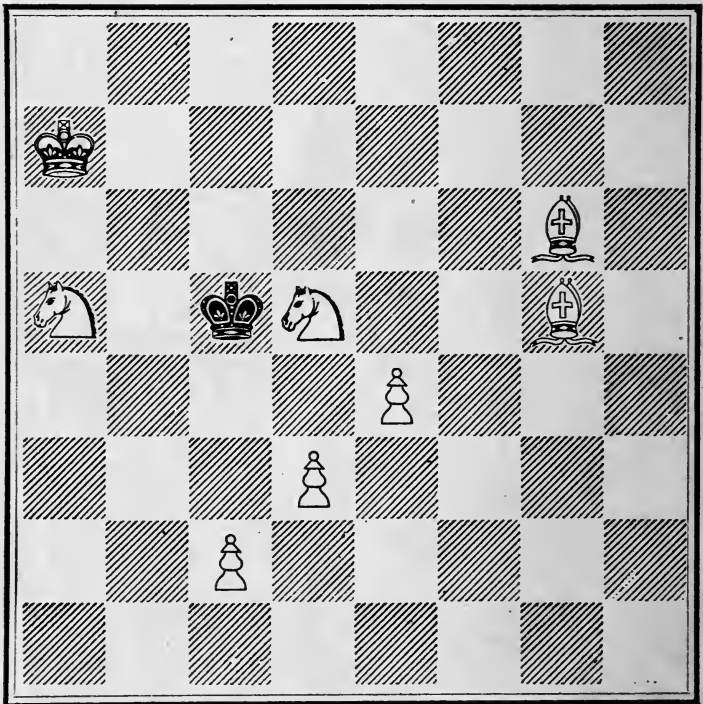


WHITE. *impossible position*

White to play, and mate in One move.

PROBLEM XXII.

BLACK.

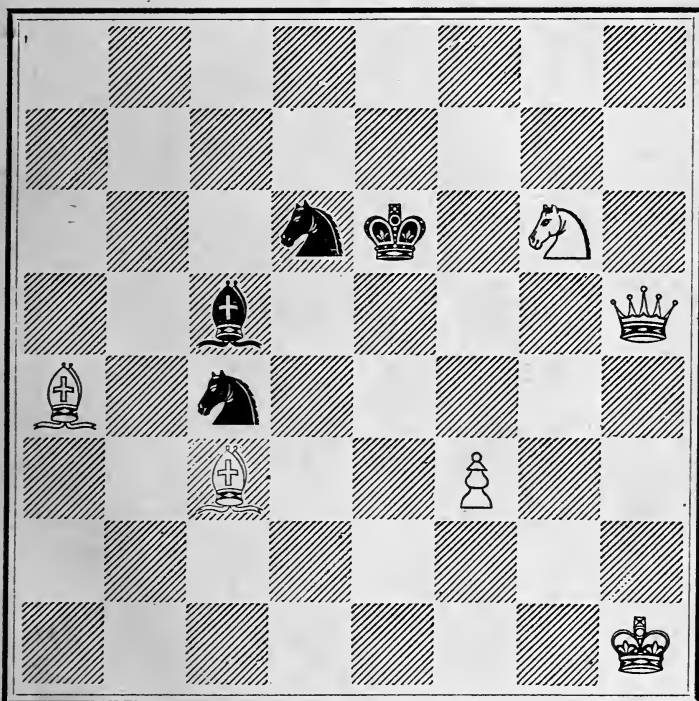


WHITE.

White to play, and mate in Two moves.

PROBLEM XXIII.

BLACK.

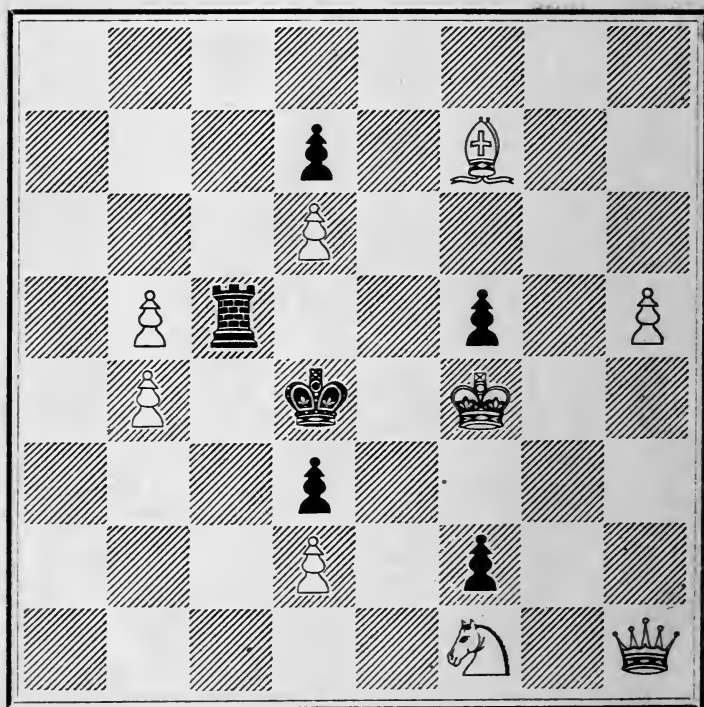


WHITE.

White to play, and mate in Two moves.

PROBLEM XXIV.

BLACK.

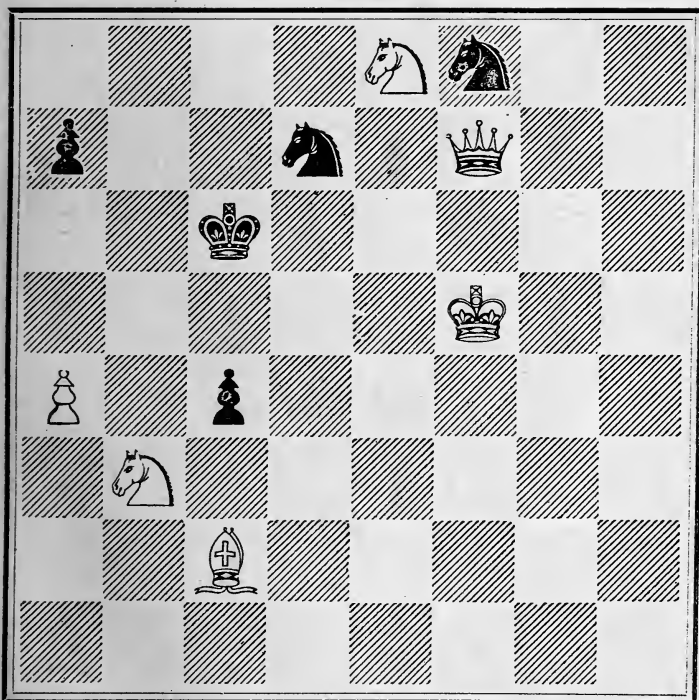


WHITE.

White to play, and mate in Two moves.

PROBLEM XXV.

BLACK.

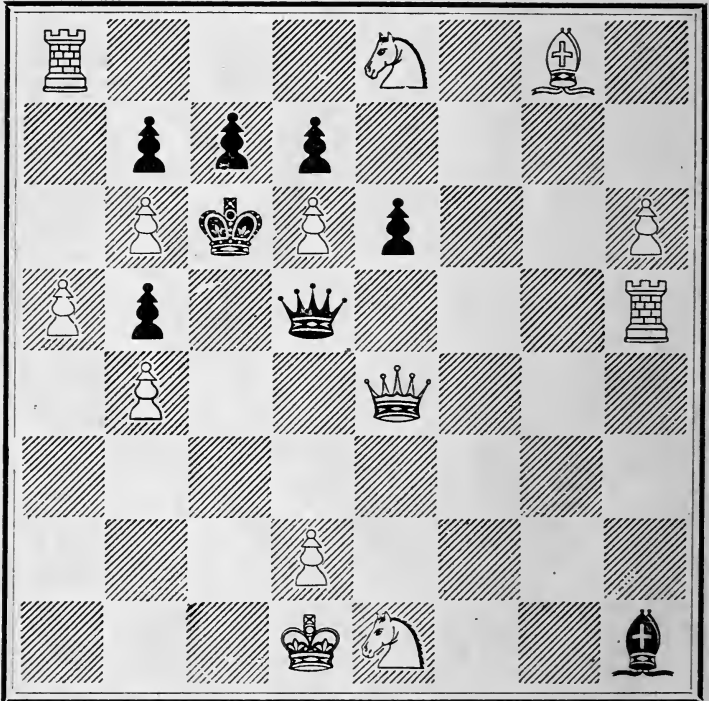


WHITE.

White to play, and mate in Two moves.

PROBLEM XXVI.

BLACK.

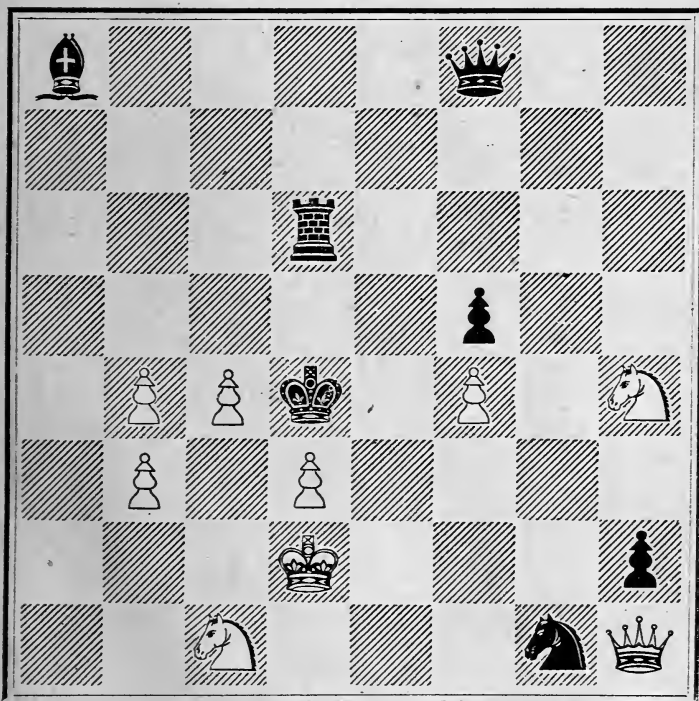


WHITE.

White to play, and mate in Two moves.

PROBLEM XXVII.

BLACK.

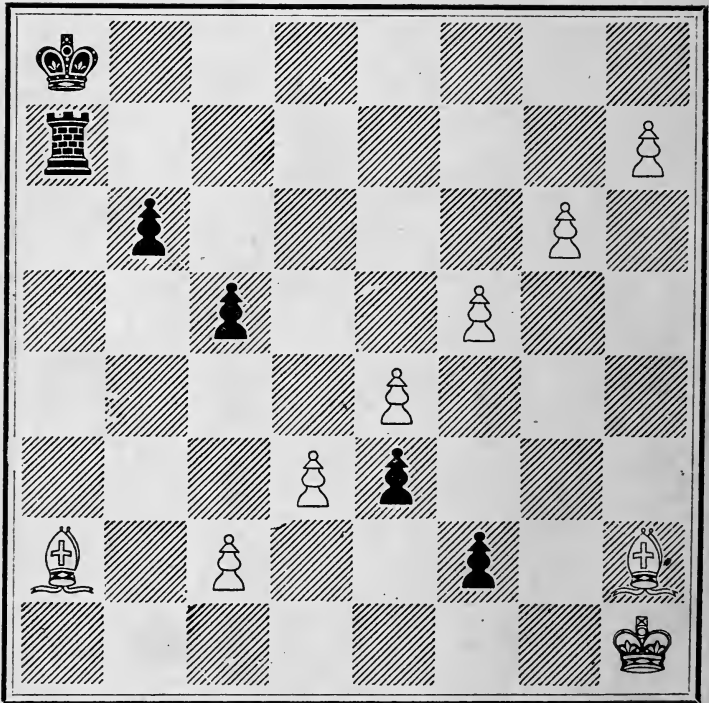


WHITE.

White to play, and mate in Two moves.

PROBLEM XXVIII.

BLACK.

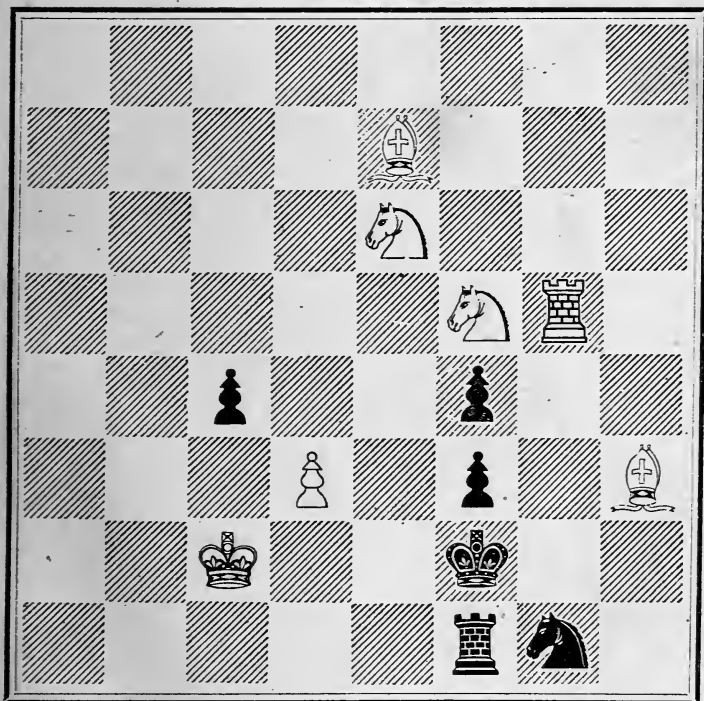


WHITE.

White to play, and mate in Three moves.

PROBLEM XXIX.

BLACK.

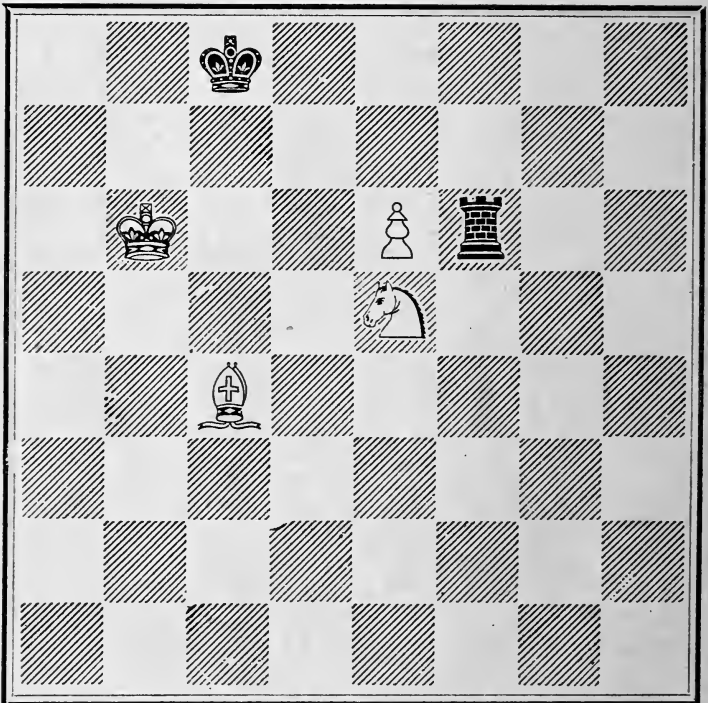


WHITE.

White to play, and mate in Three moves.

PROBLEM XXX.

BLACK.

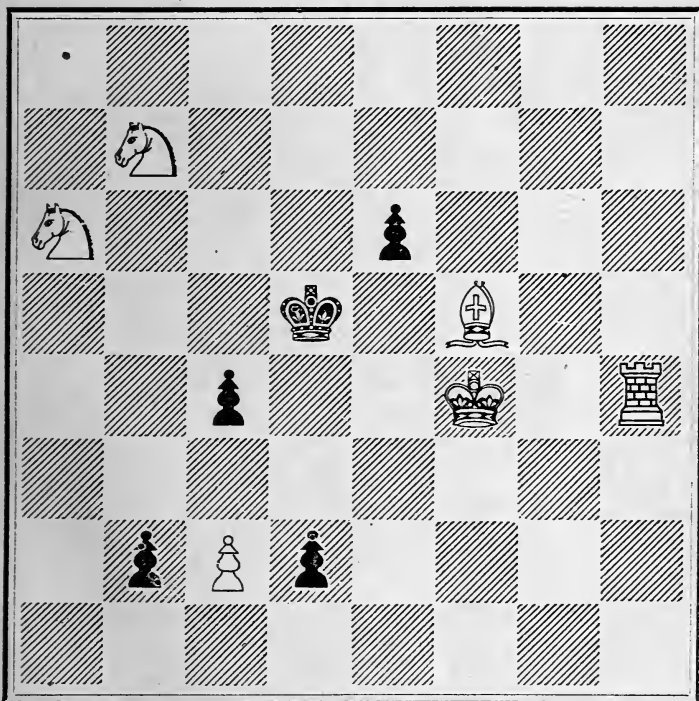


WHITE.

White to play, and mate in Three moves.

PROBLEM XXXI.

BLACK.

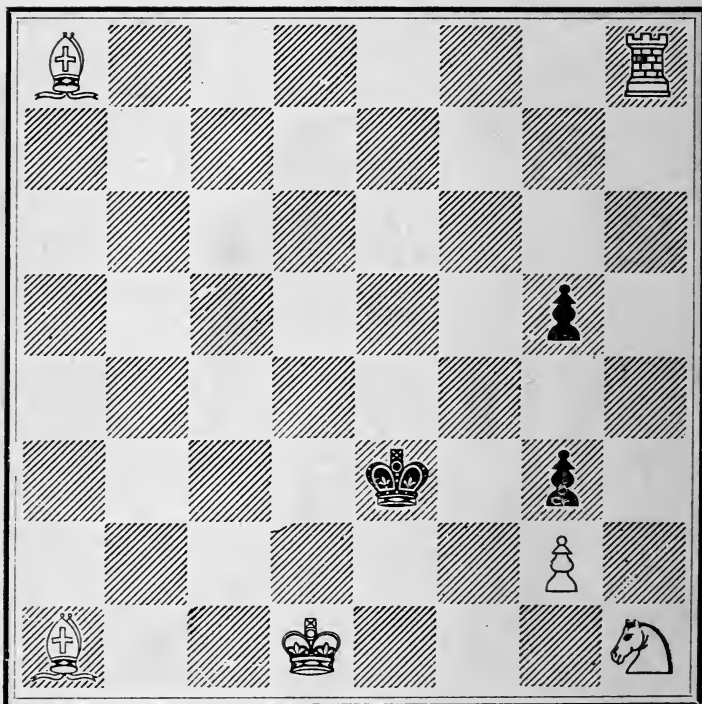


WHITE.

White to play, and mate in Three moves.

PROBLEM XXXII.

BLACK.

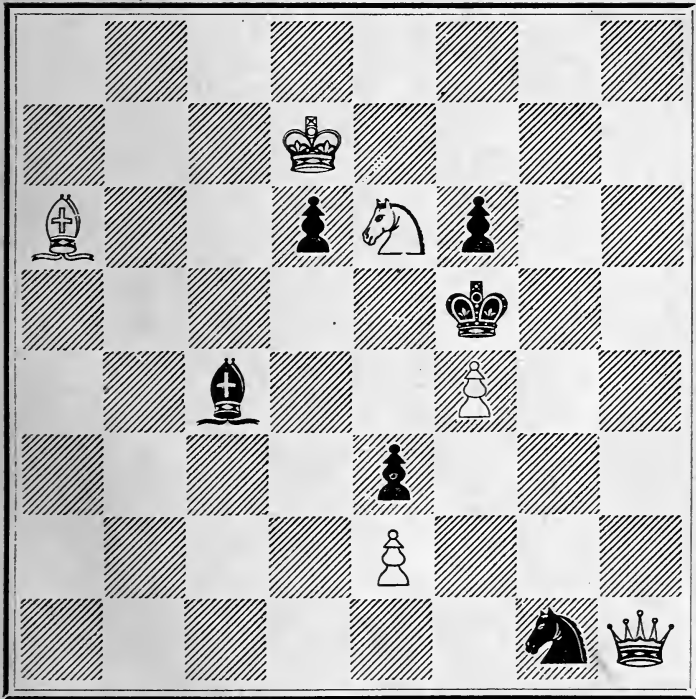


WHITE.

White to play, and mate in Three moves.

PROBLEM XXXIII.

BLACK.

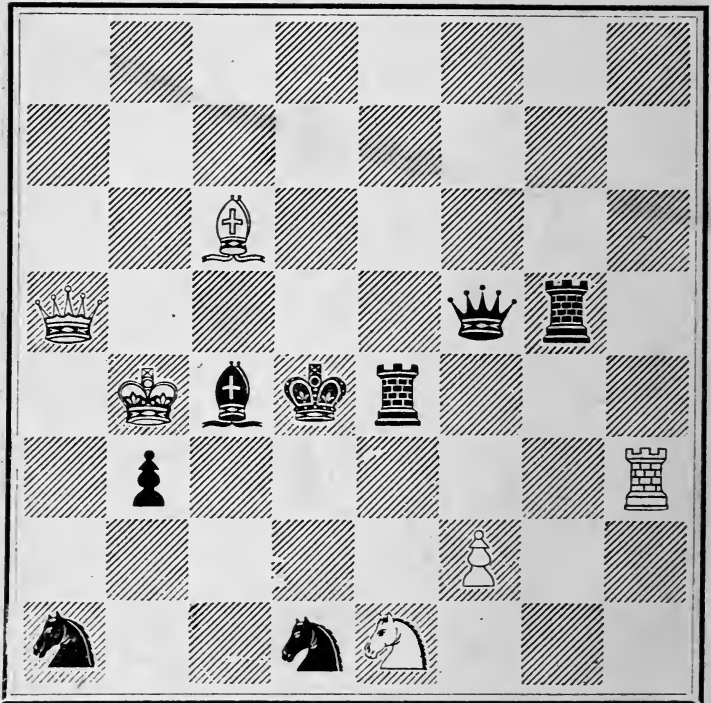


WHITE.

White to play, and mate in Three moves.

PROBLEM XXXIV.

BLACK.

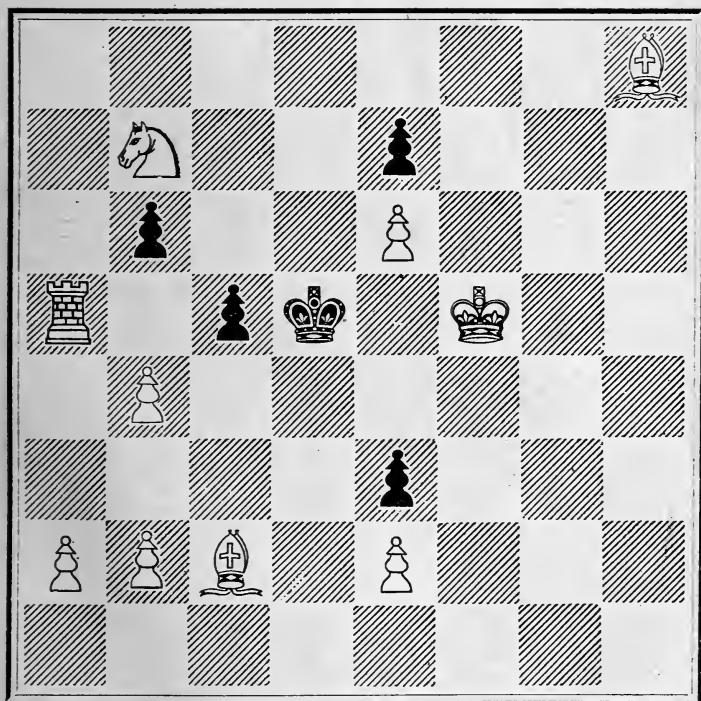


WHITE.

White to play, and mate in Three moves.

PROBLEM XXXV.

BLACK.

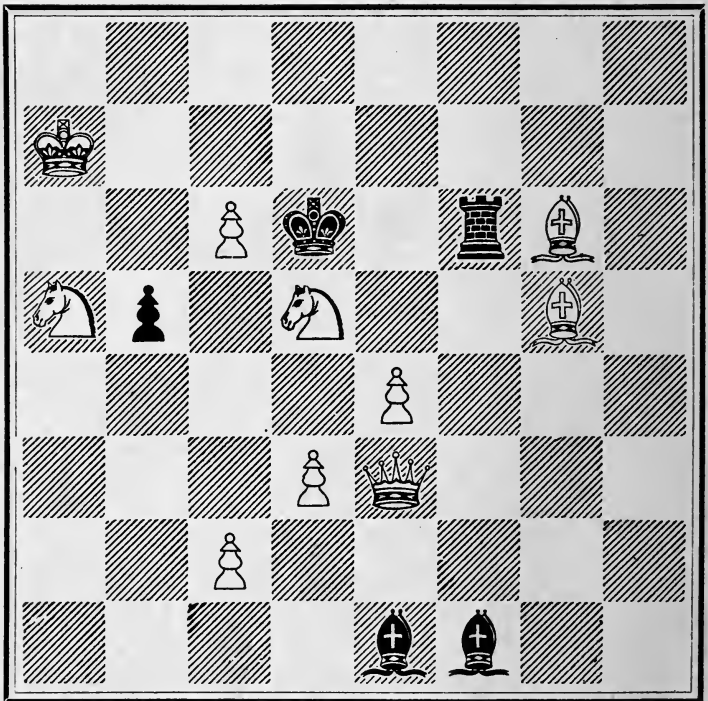


WHITE.

White to play, and mate in Three moves.

PROBLEM XXXVI.

BLACK.

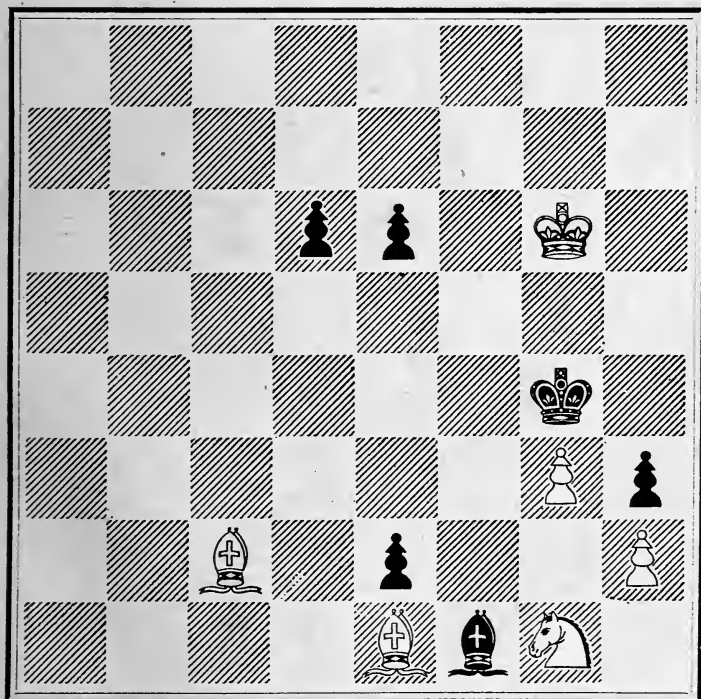


WHITE.

White to play, and mate in Three moves.

PROBLEM XXXVII.

BLACK.

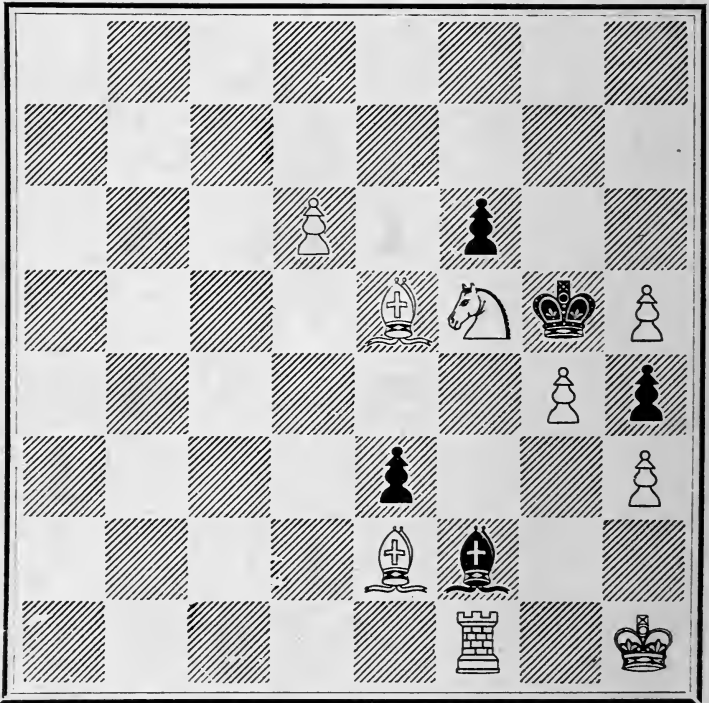


WHITE.

White to play, and mate in Three moves.

PROBLEM XXXVIII.

BLACK.

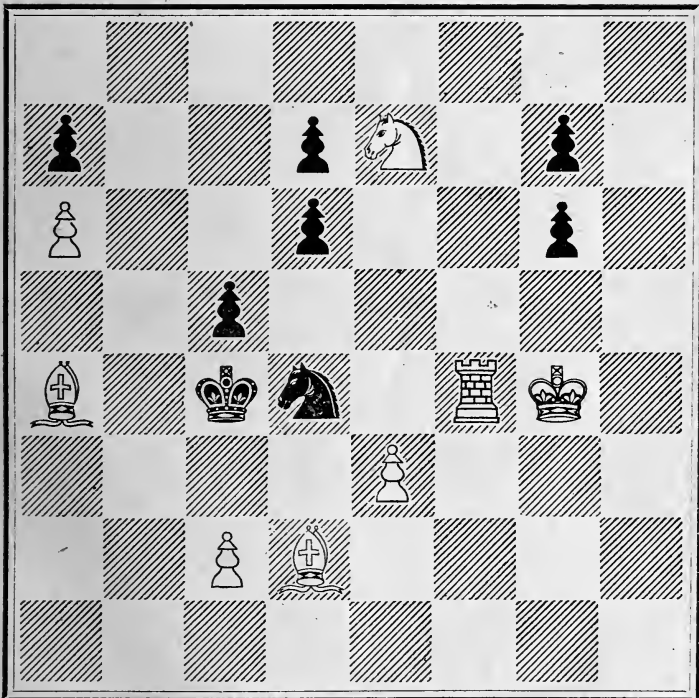


WHITE.

White to play, and mate in Three moves.

PROBLEM XXXIX.

BLACK.

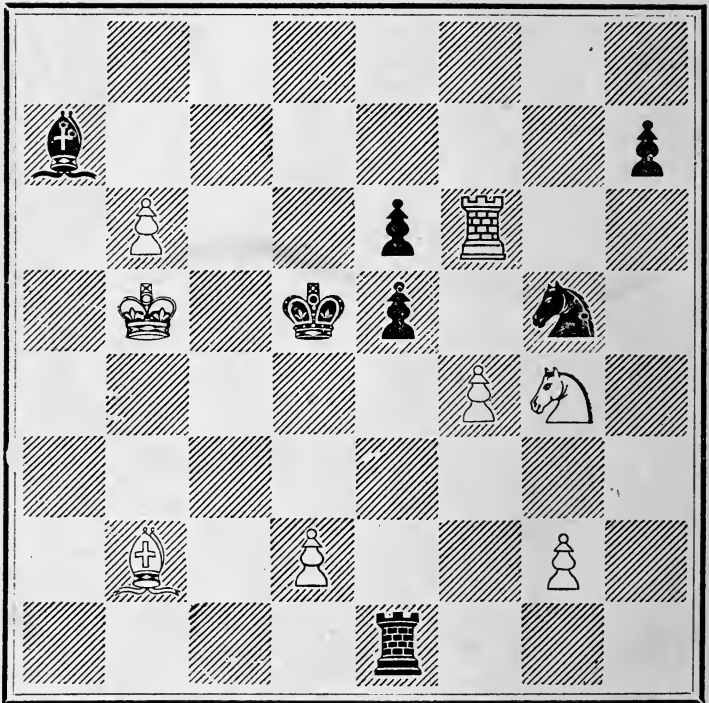


WHITE.

White to play, and mate in Three moves.

PROBLEM XL.

BLACK.

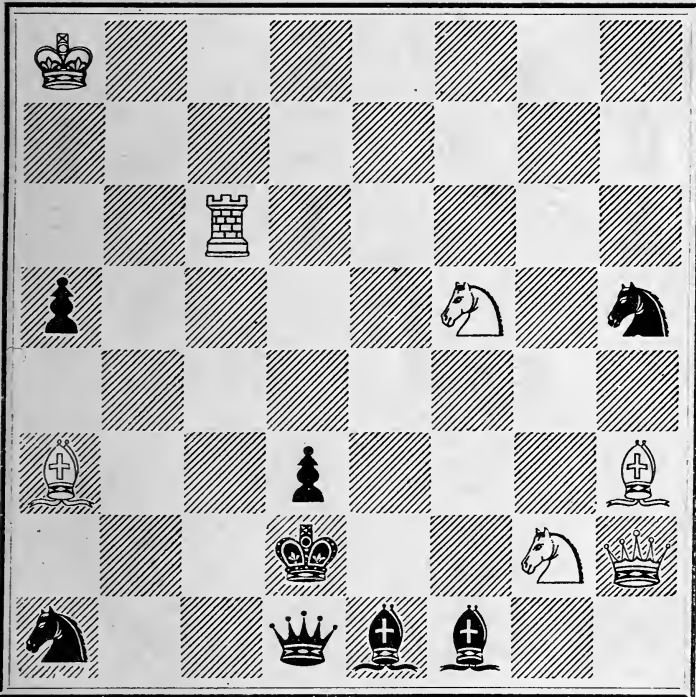


WHITE.

White to play, and mate in Three moves.

PROBLEM XLI.

BLACK.

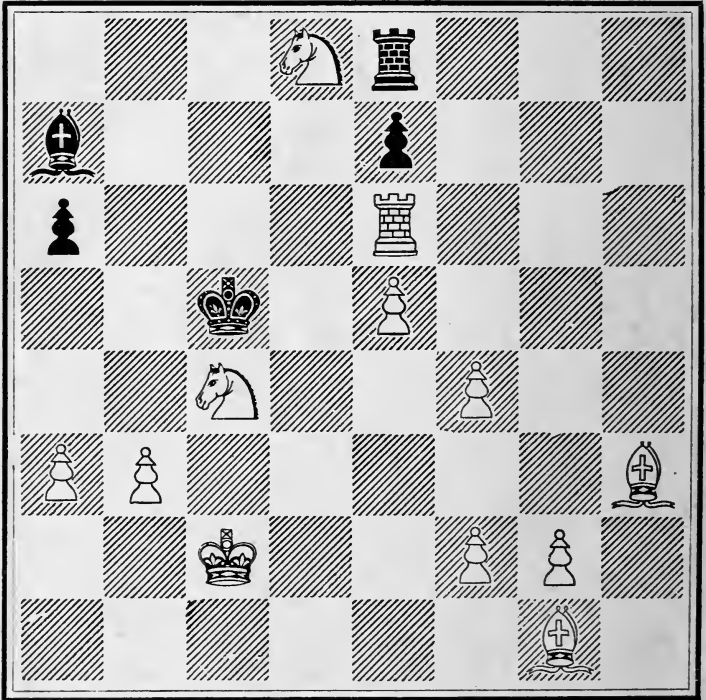


WHITE.

White to play, and mate in Three moves.

PROBLEM XLII.

BLACK.

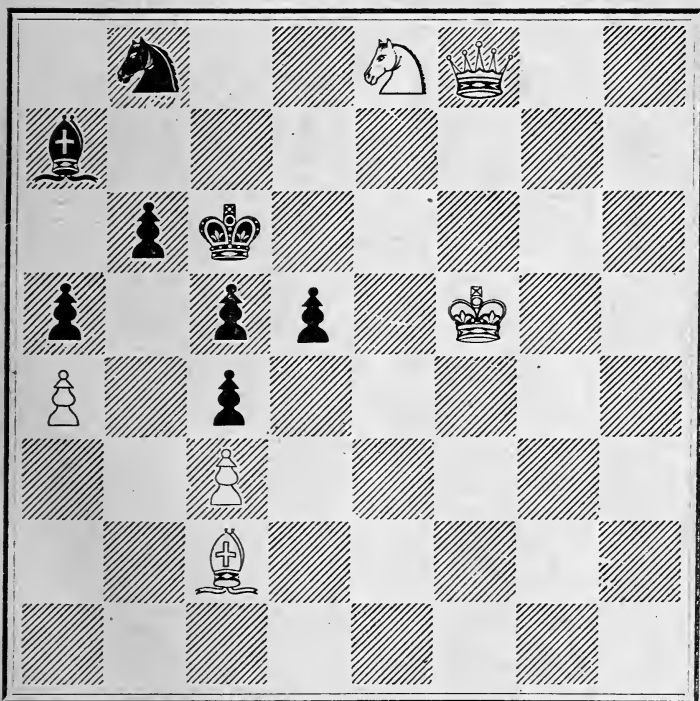


WHITE.

White to play, and mate in Three moves.

PROBLEM XLIII.

BLACK.

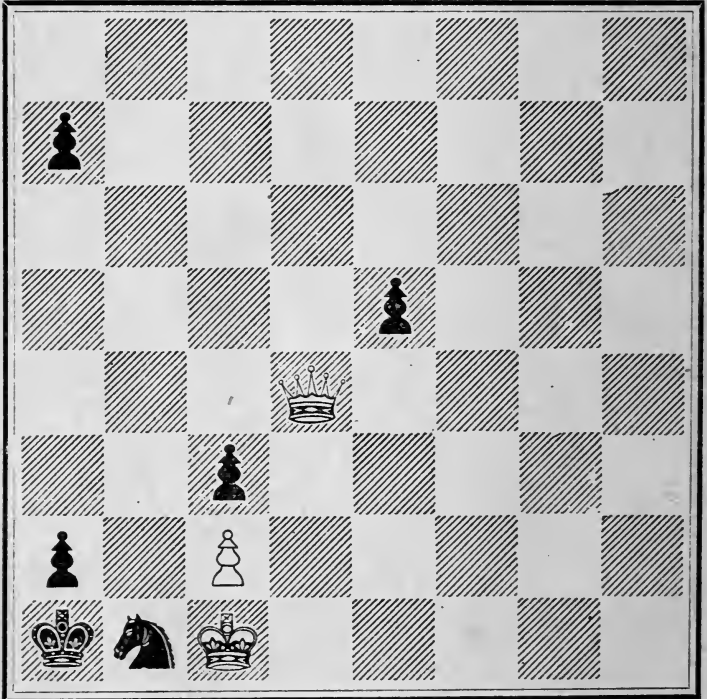


WHITE.

White to play, and mate in Three moves.

PROBLEM XLIV.

BLACK.

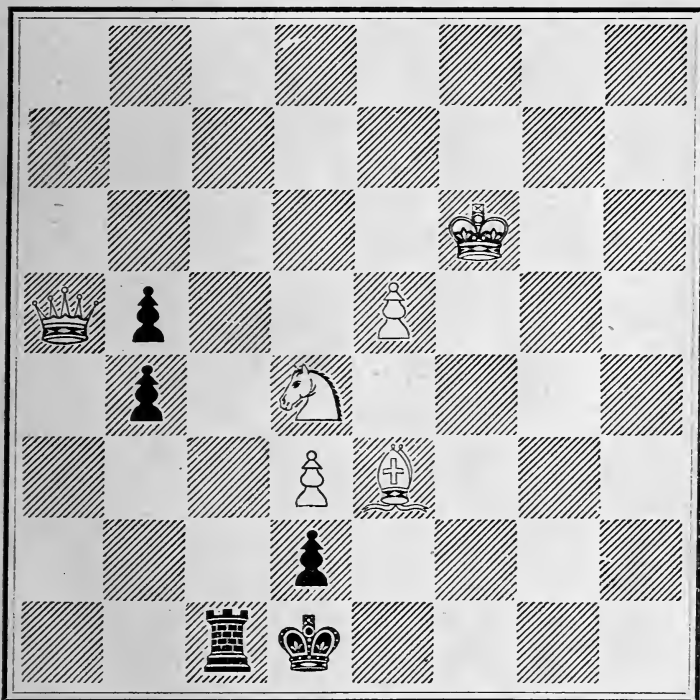


WHITE.

White to play, and mate in Three moves.

PROBLEM XLV.

BLACK.

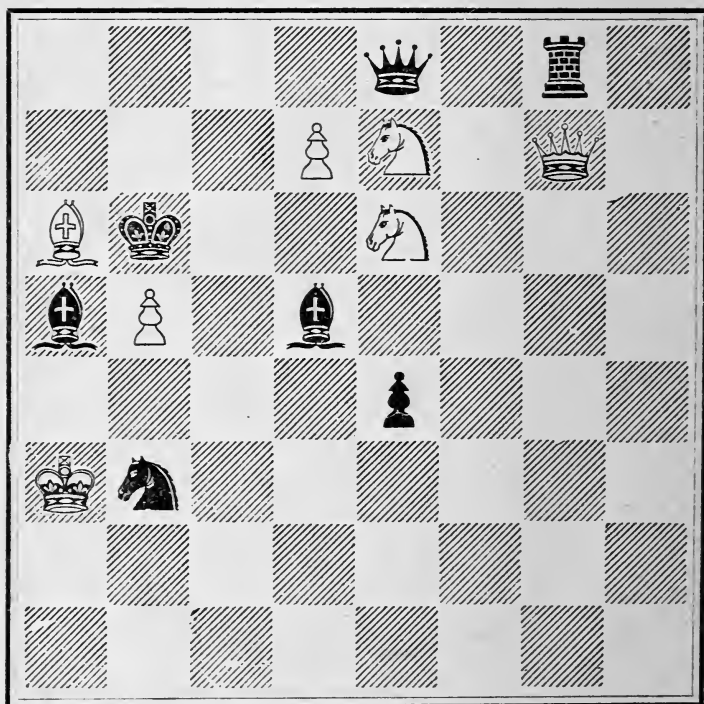


WHITE.

White to play, and mate in Three moves.

PROBLEM XLVI.

BLACK.

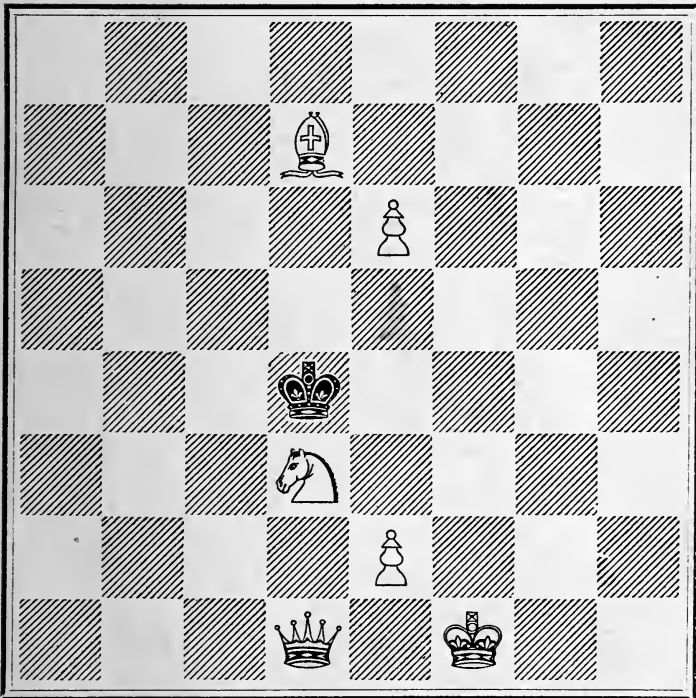


WHITE.

White to play, and mate in Three moves.

PROBLEM XLVII.

BLACK.

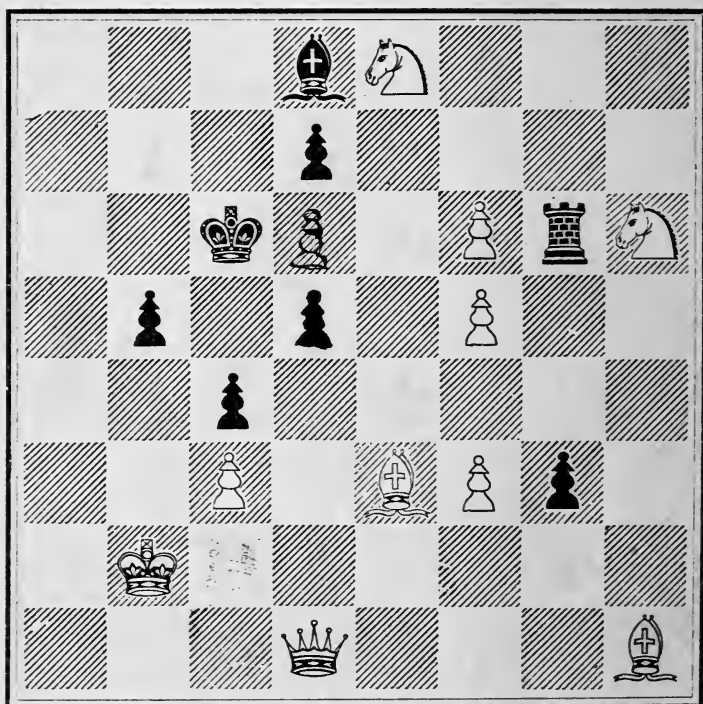


WHITE.

White to play, and mate in Three moves.

PROBLEM XLVIII

BLACK.

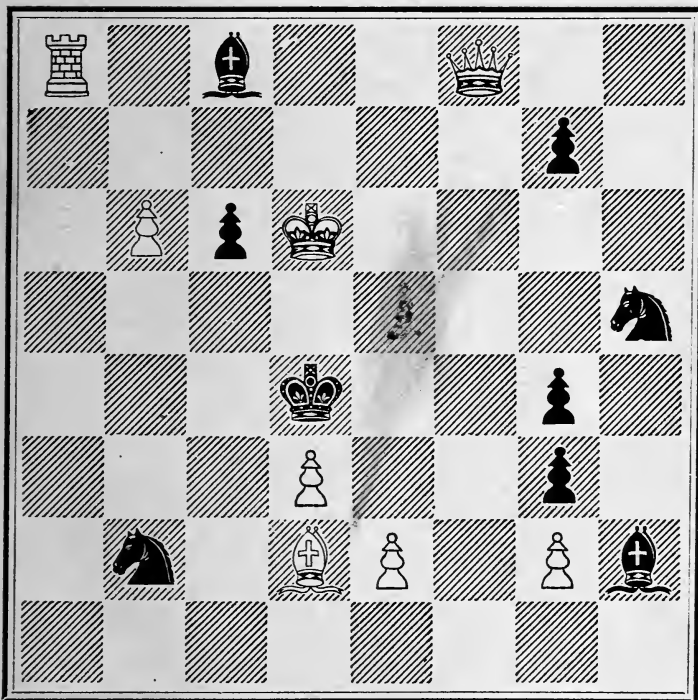


WHITE.

White to play, and mate in Three moves.

PROBLEM XLIX.

BLACK.

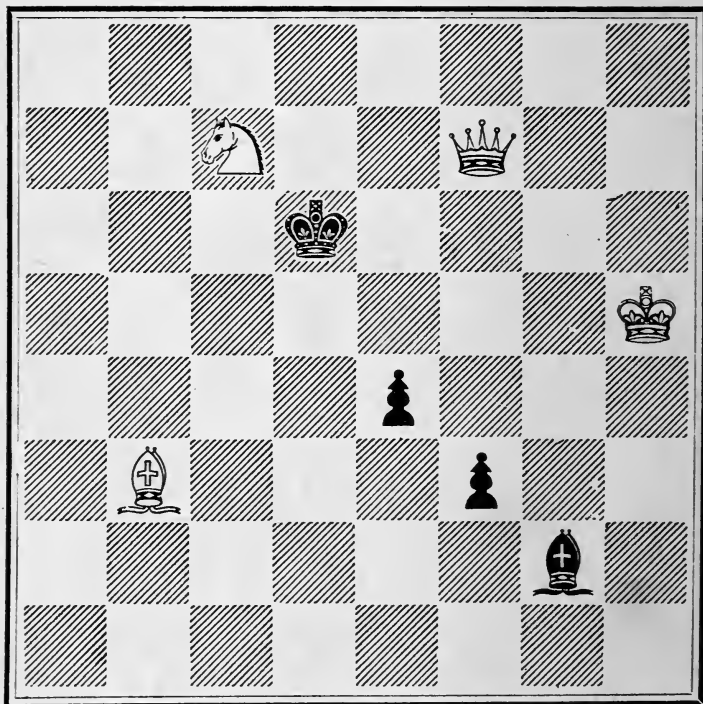


WHITE.

White to play, and mate in Three moves.

PROBLEM L.

BLACK.

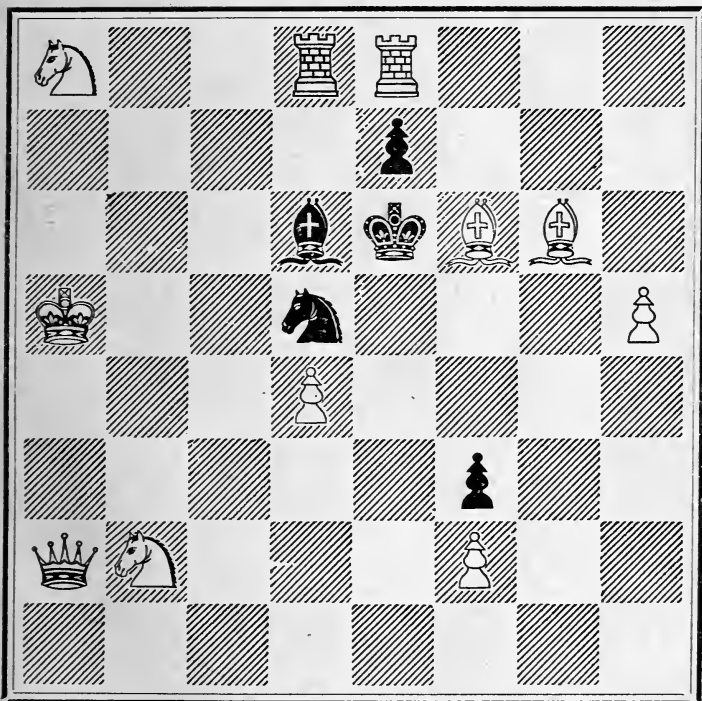


WHITE.

White to play, and mate in Three moves.

PROBLEM LI.

BLACK.

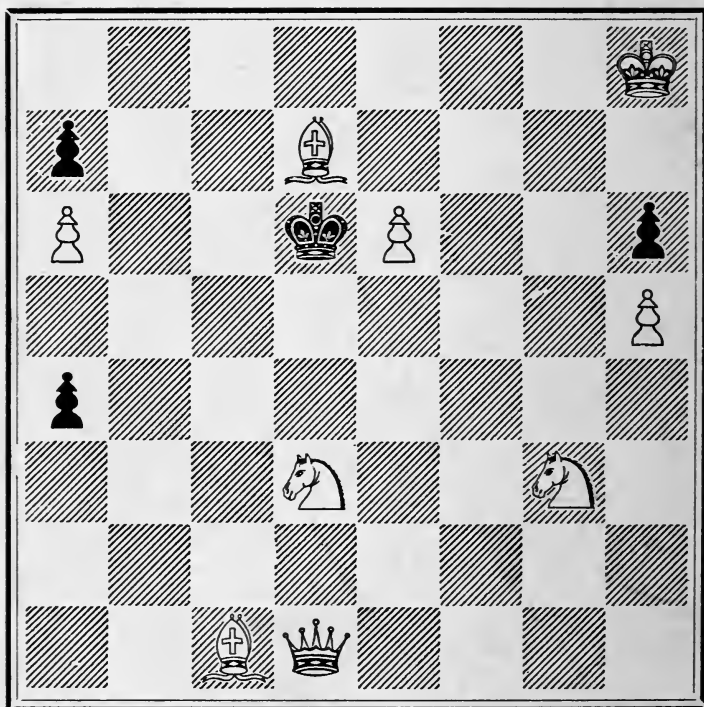


WHITE.

White to play and mate in Three moves.

PROBLEM LII.

BLACK.

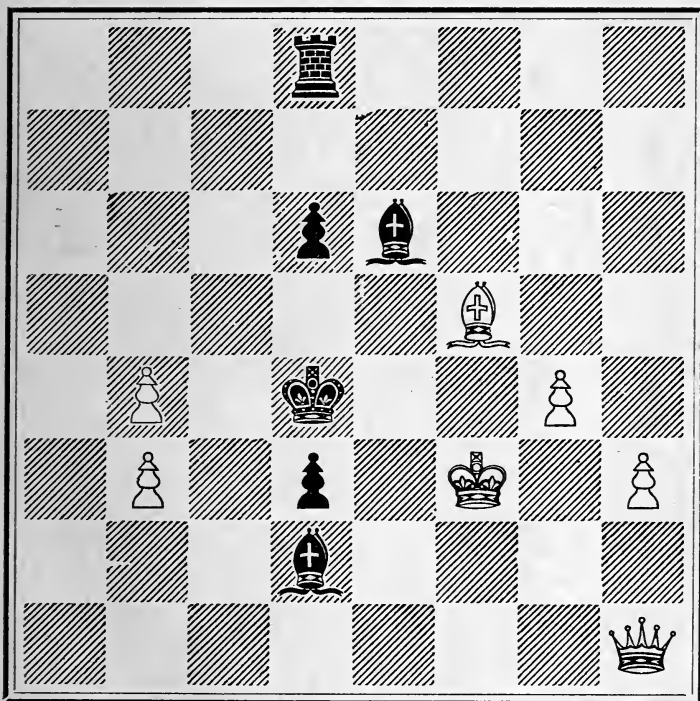


WHITE.

White to play, and mate in Three moves.

PROBLEM LIII.

BLACK.

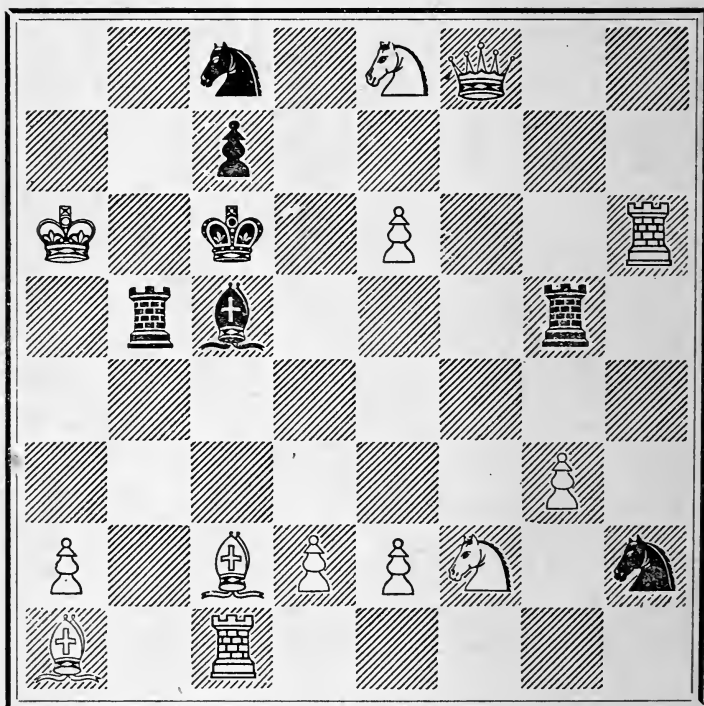


WHITE.

White to play and mate in Four moves.

PROBLEM LIV.

BLACK.

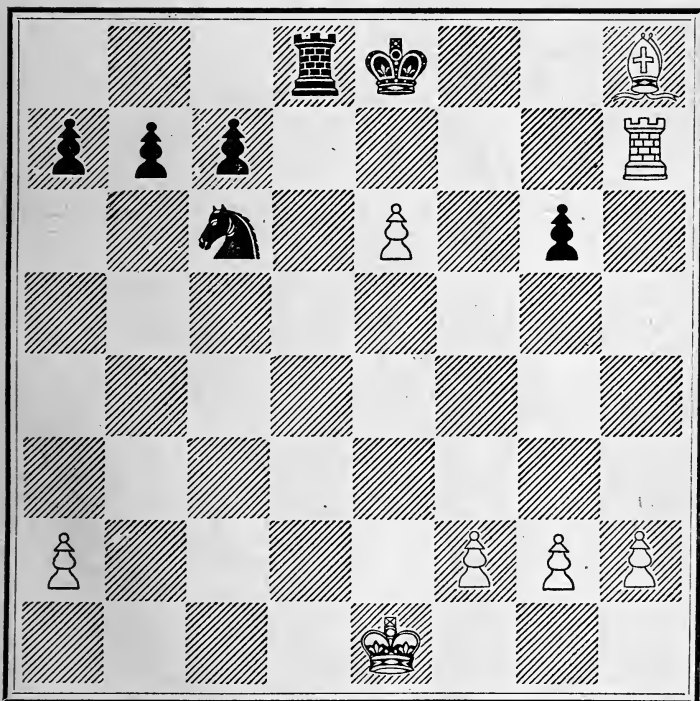


WHITE.

White to play, and mate in Four moves.

PROBLEM LV.

BLACK.

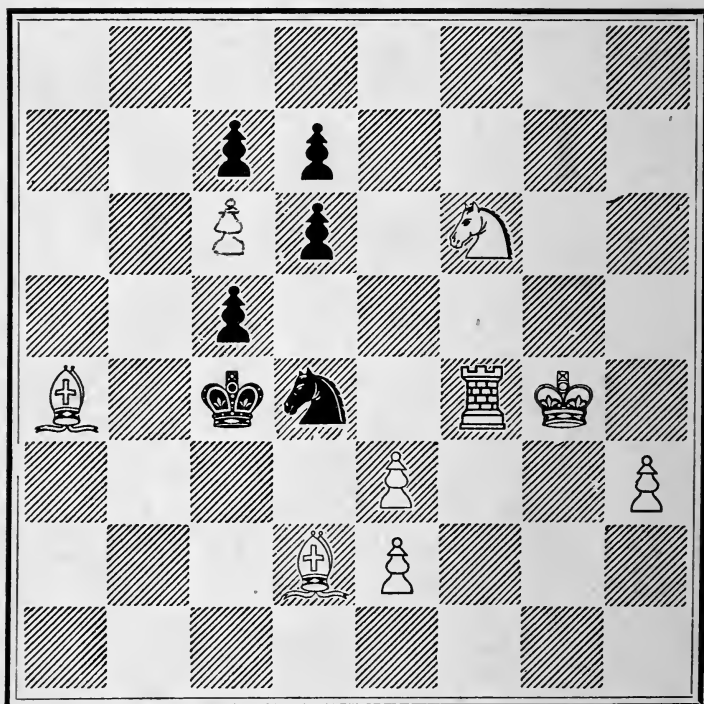


WHITE.

White announced mate in Four moves.

PROBLEM LVI.

BLACK.

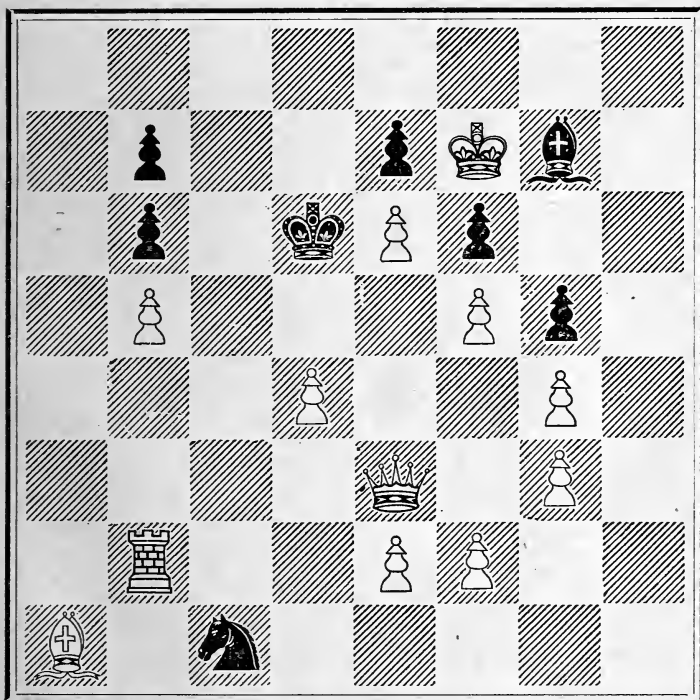


WHITE.

White to play, and mate in Four moves.

PROBLEM LVII.

BLACK.

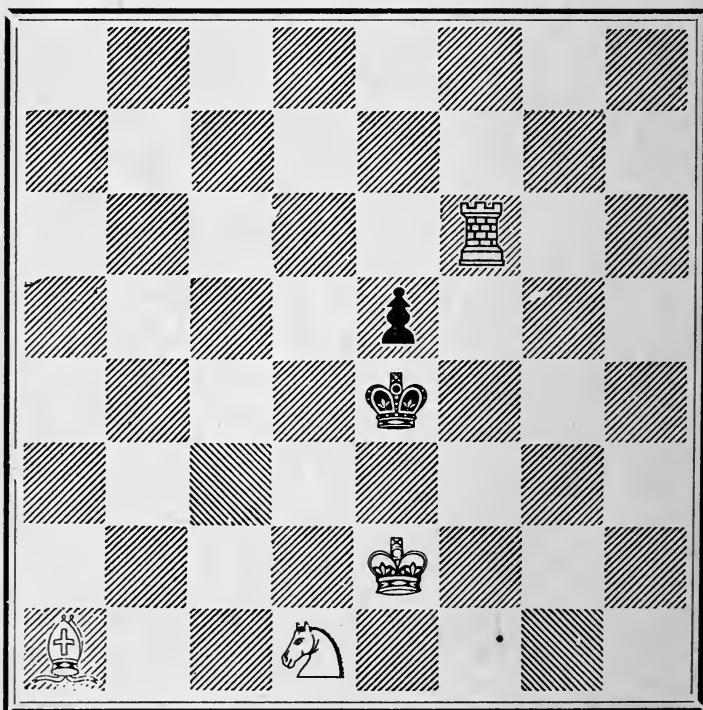


WHITE.

White to play, and mate in Four moves.

PROBLEM LVIII.

BLACK.

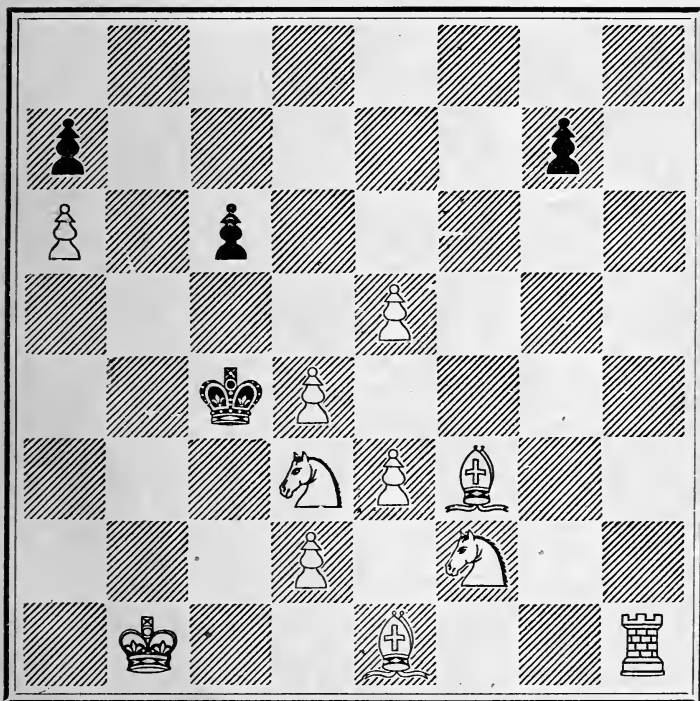


WHITE.

White to play, and mate in Four moves.

PROBLEM LXI.

BLACK.

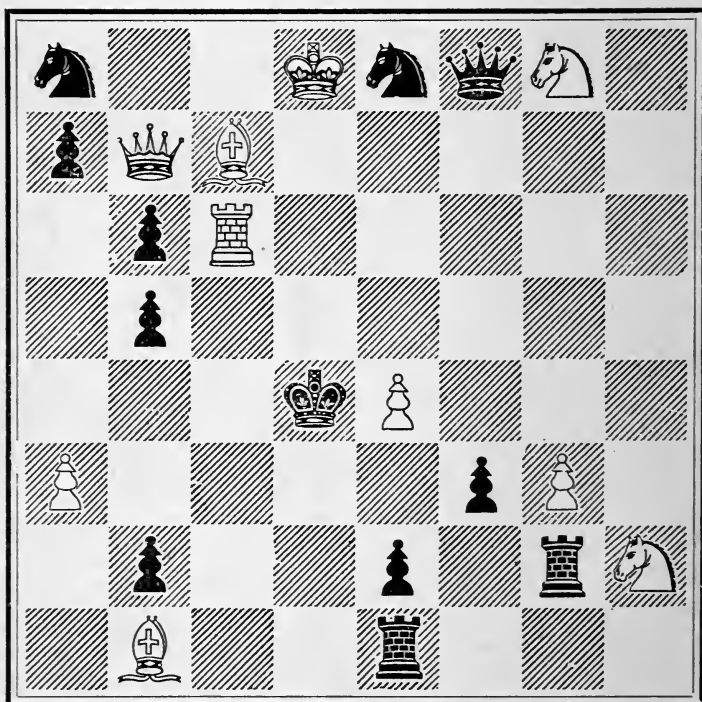


WHITE.

White to play, and mate in Four moves.

PROBLEM LX.

BLACK.

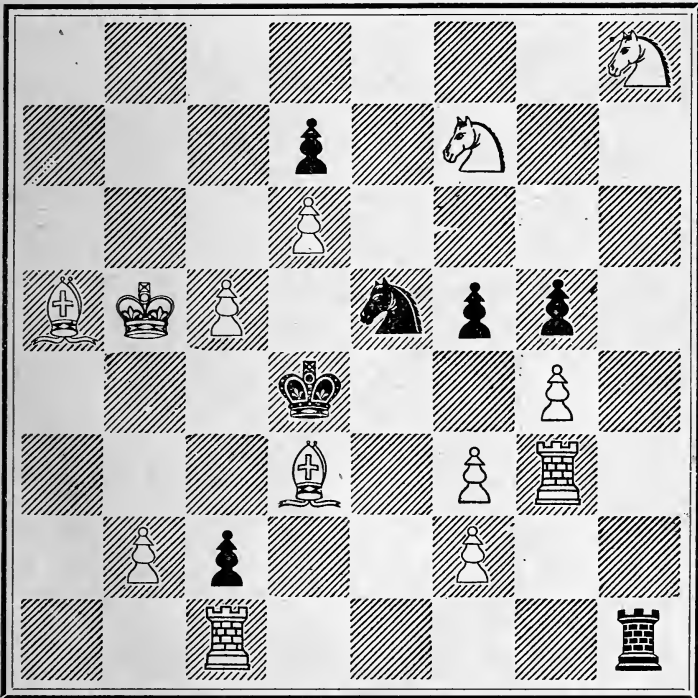


WHITE.

White to play, and mate in Four moves.

PROBLEM LXI.

BLACK.

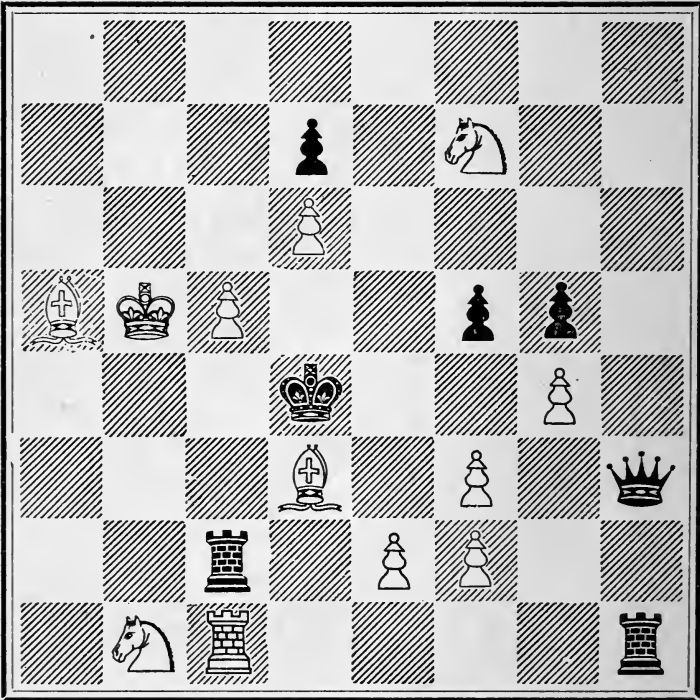


WHITE.

White to play, and mate in Four moves.

PROBLEM LXII.

BLACK.

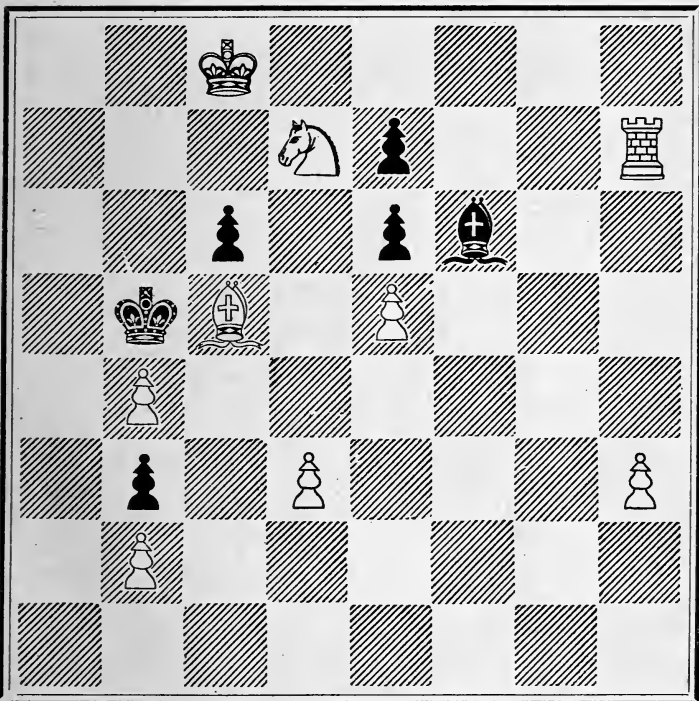


WHITE.

White to play, and mate in Four moves.

PROBLEM LXIII.

BLACK.

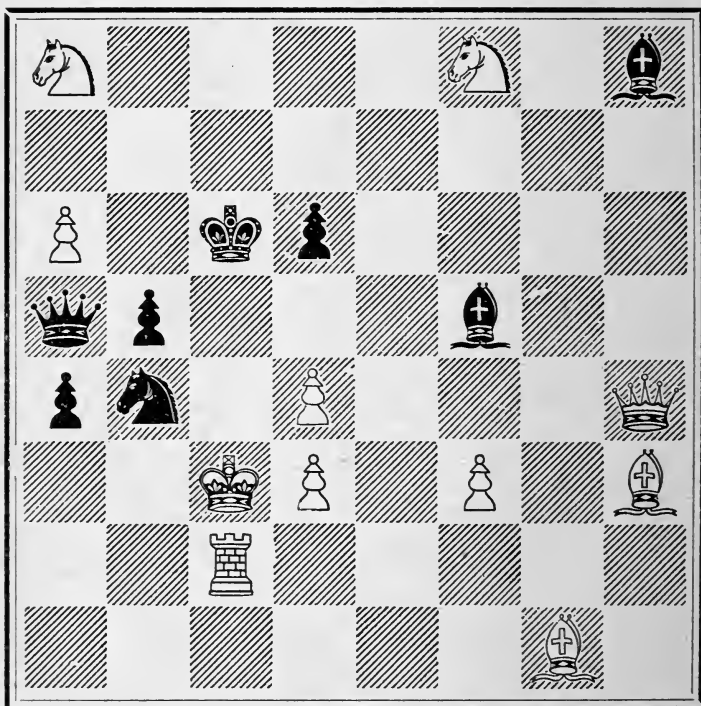


WHITE.

White to play, and mate in Four moves.

PROBLEM LXIV.

BLACK.

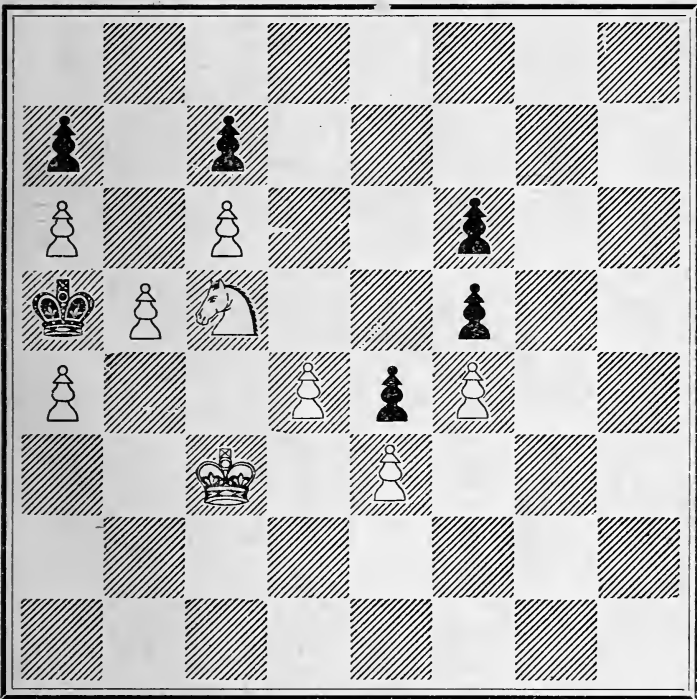


WHITE.

White to play, and mate in Four moves.

PROBLEM LXV.

BLACK.

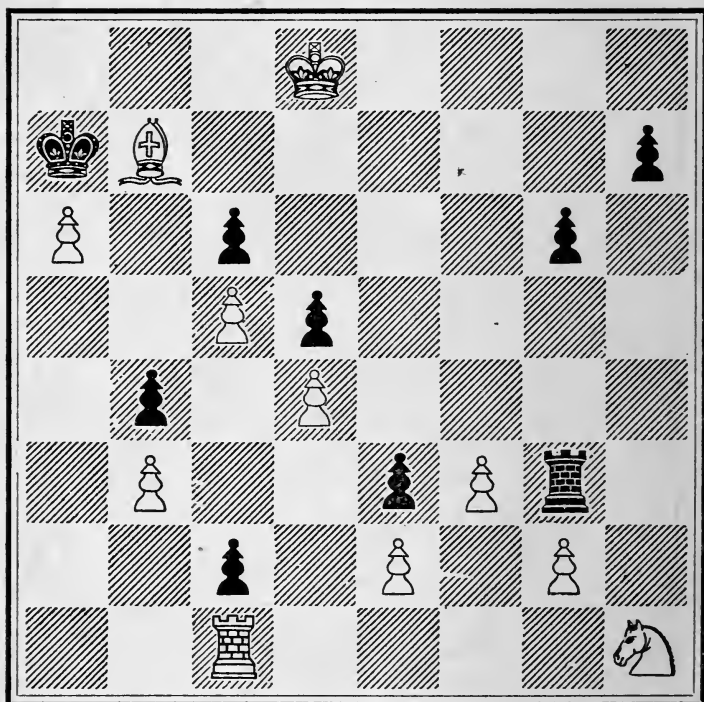


WHITE.

White to play, and mate in Five moves.

PROBLEM LXVI.

BLACK.

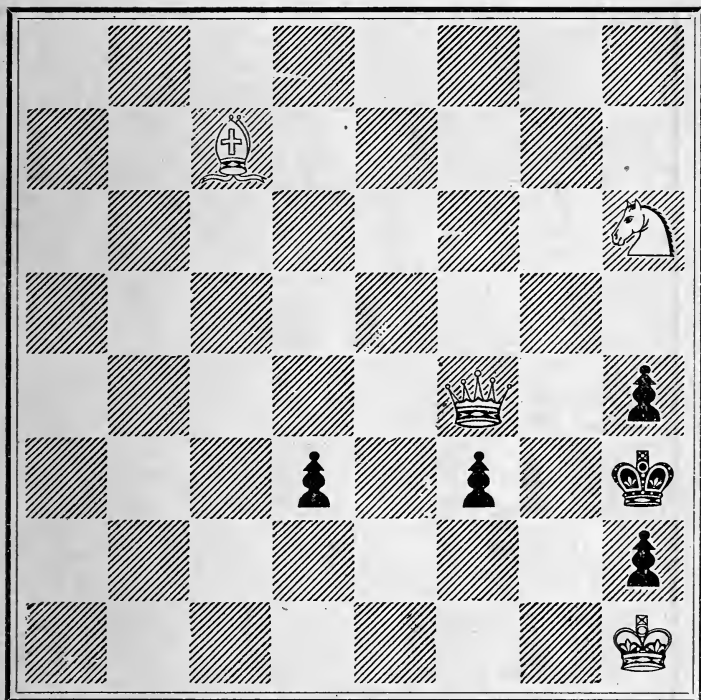


WHITE.

White to play, and mate in Six moves.

PROBLEM LXVII.

BLACK.

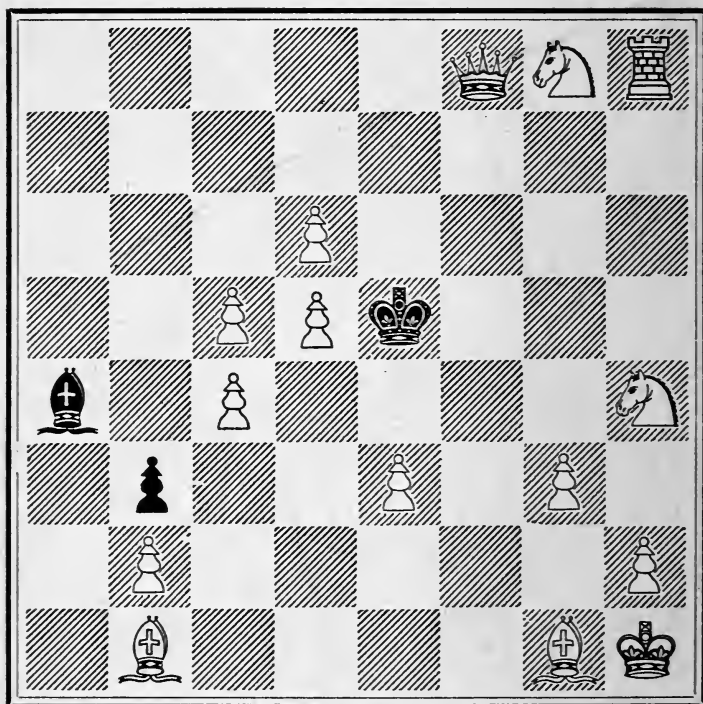


WHITE.

White to play, and compel Black to mate in Three moves.

PROBLEM LXVIII.

BLACK.

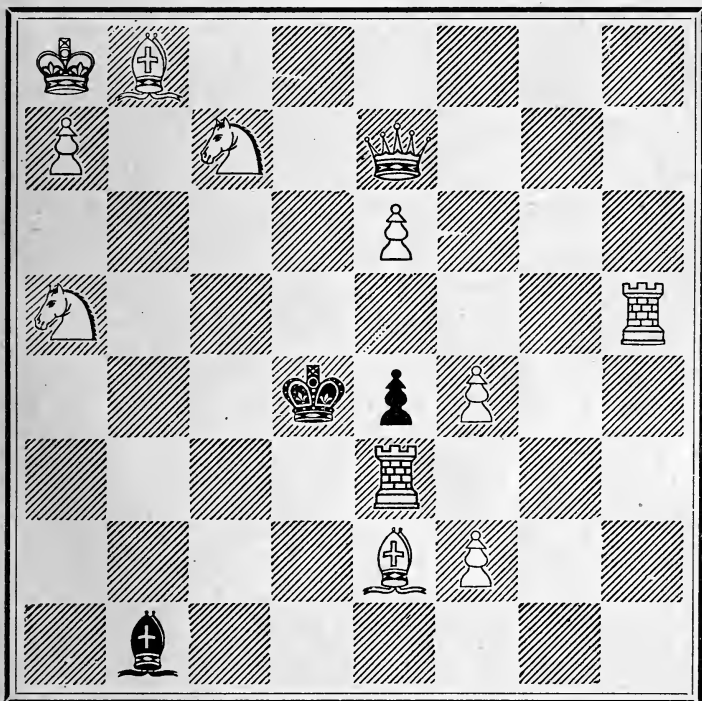


WHITE.

White to play, and compel Black to mate in Three moves.

PROBLEM LXIX.

BLACK.

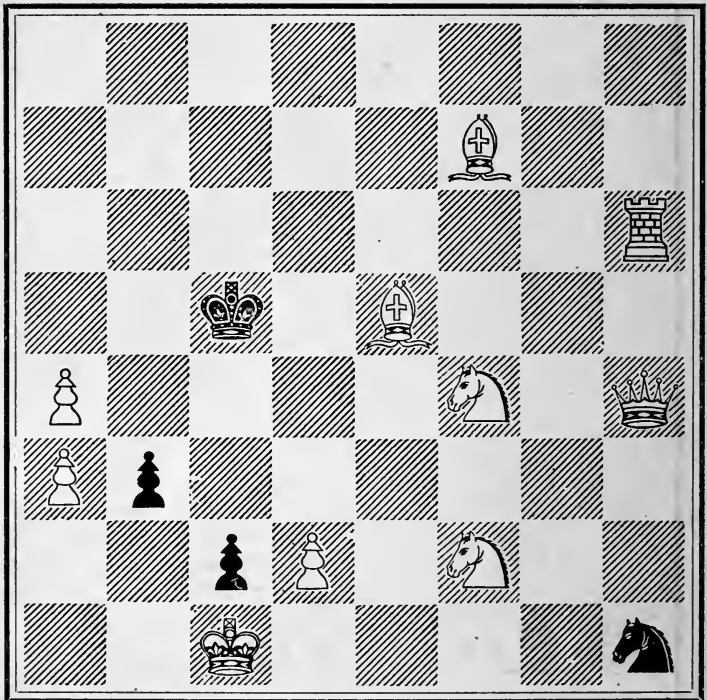


WHITE.

White to play, and compel Black to mate in Three moves.

PROBLEM LXX.

BLACK.

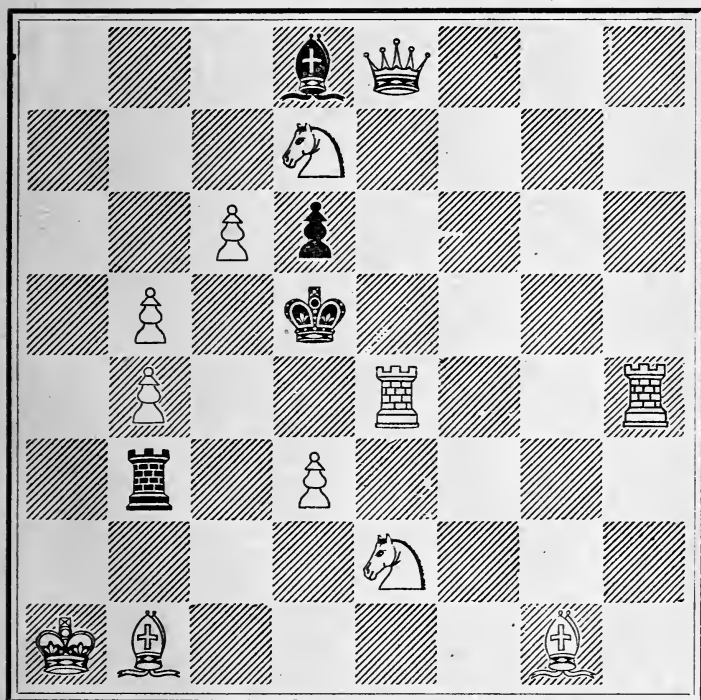


WHITE.

White to play, and compel Black to mate in Four moves.

PROBLEM LXXI.

BLACK.

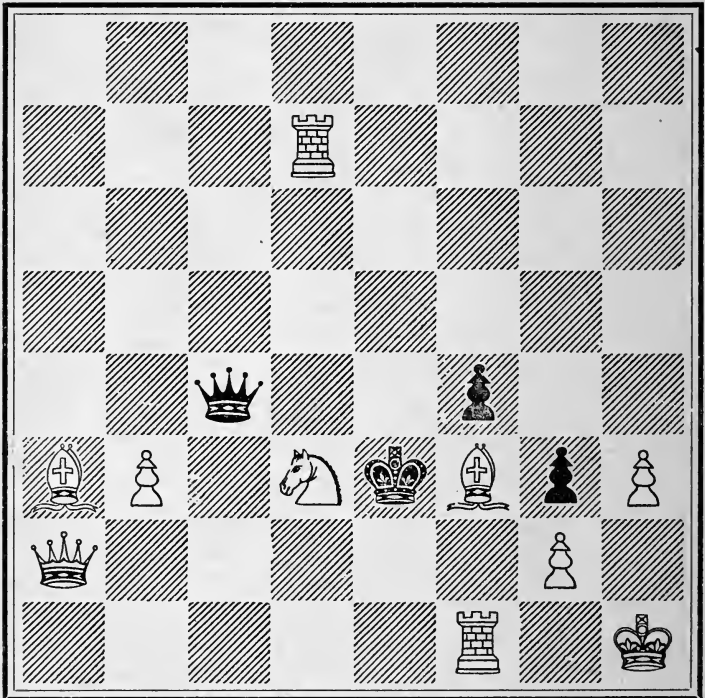


WHITE.

White to play, and compel Black to mate in Four moves.

PROBLEM LXXII.

BLACK.

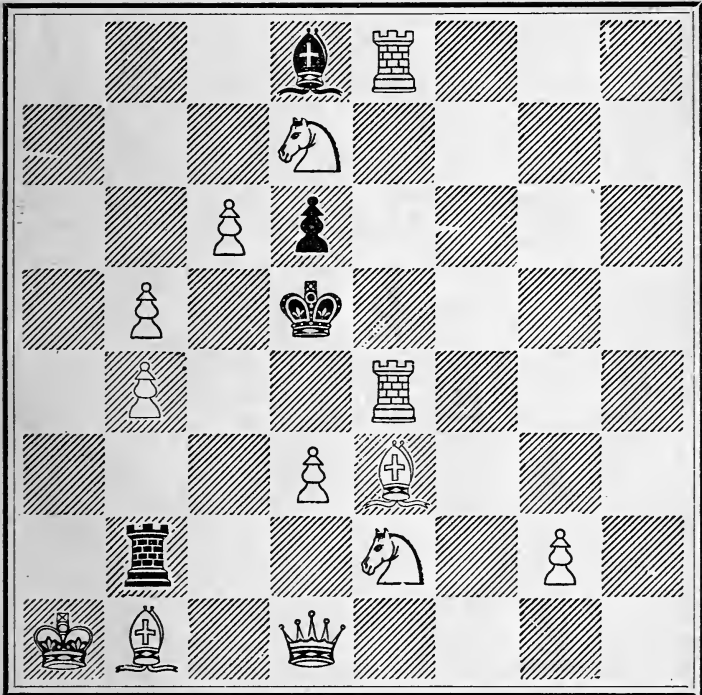


WHITE.

White to play, and compel Black to mate in Four moves.

PROBLEM LXXIII.

BLACK.

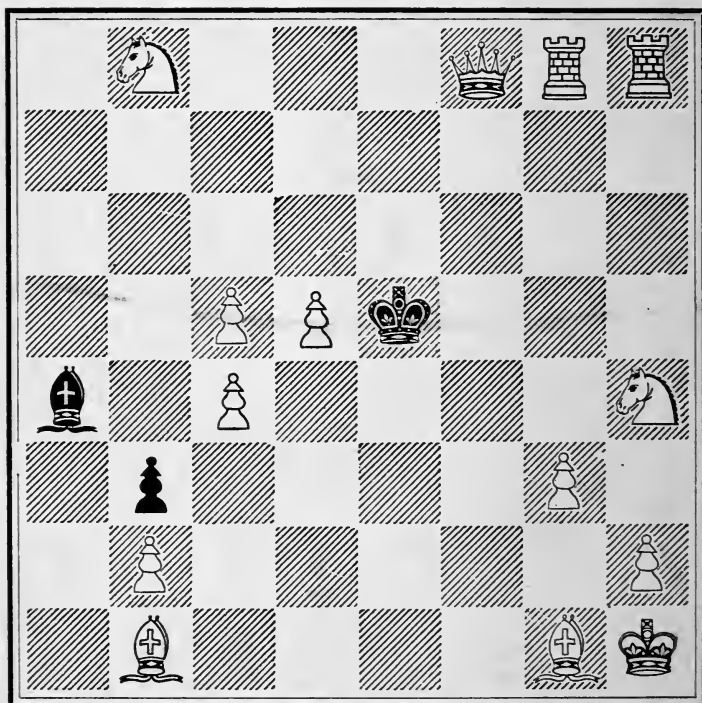


WHITE.

White to play, and compel Black to mate in Five moves.

PROBLEM LXXIV.

BLACK.

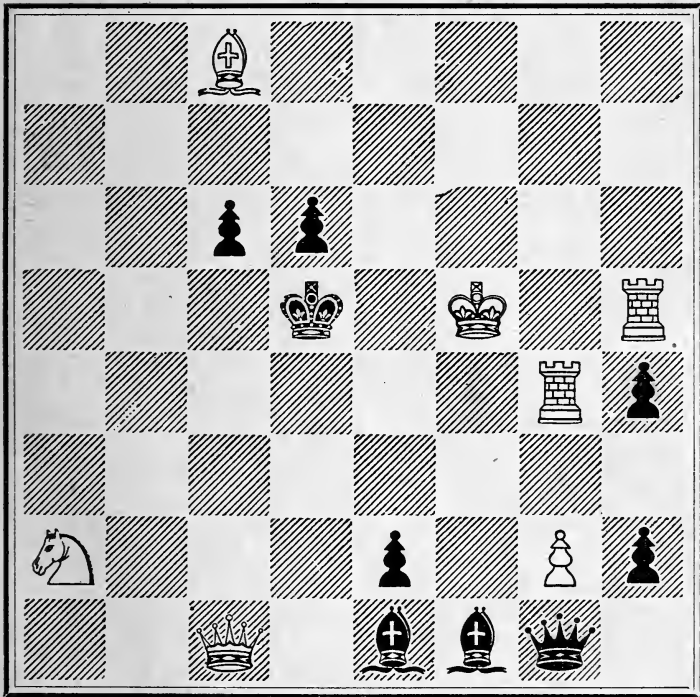


WHITE.

White to play, and compel Black to mate in Five moves.

PROBLEM LXXV.

BLACK.

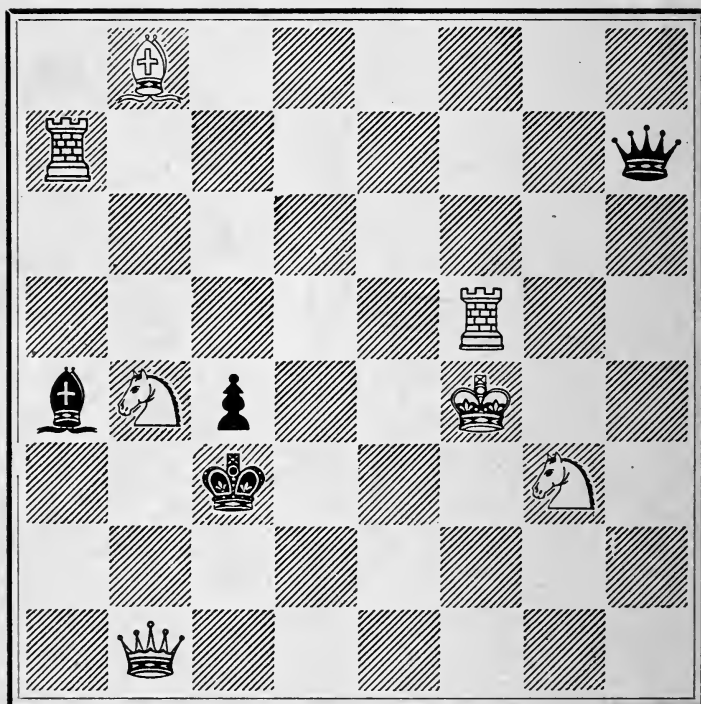


WHITE.

White to play, and compel Black to mate in Five moves.

PROBLEM LXXVI.

BLACK.

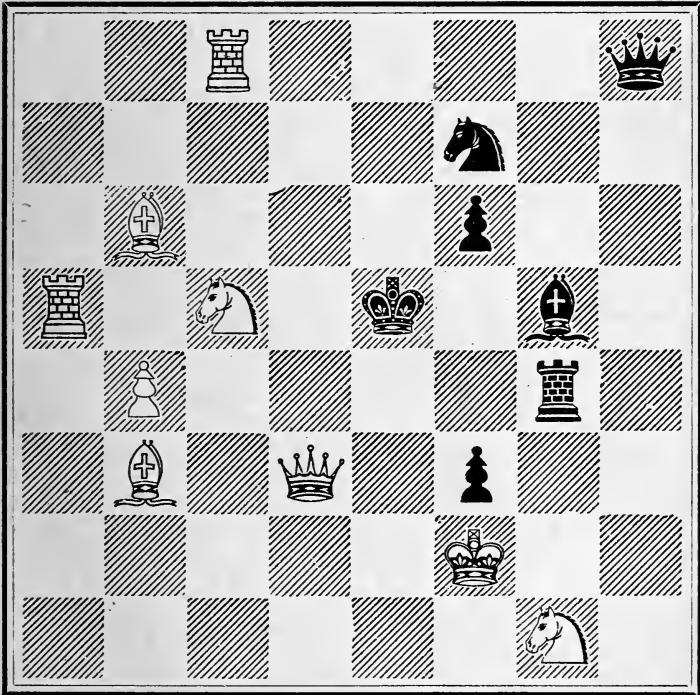


WHITE.

White to play, and compel Black to mate in Five moves.

PROBLEM LXXVII.

BLACK.

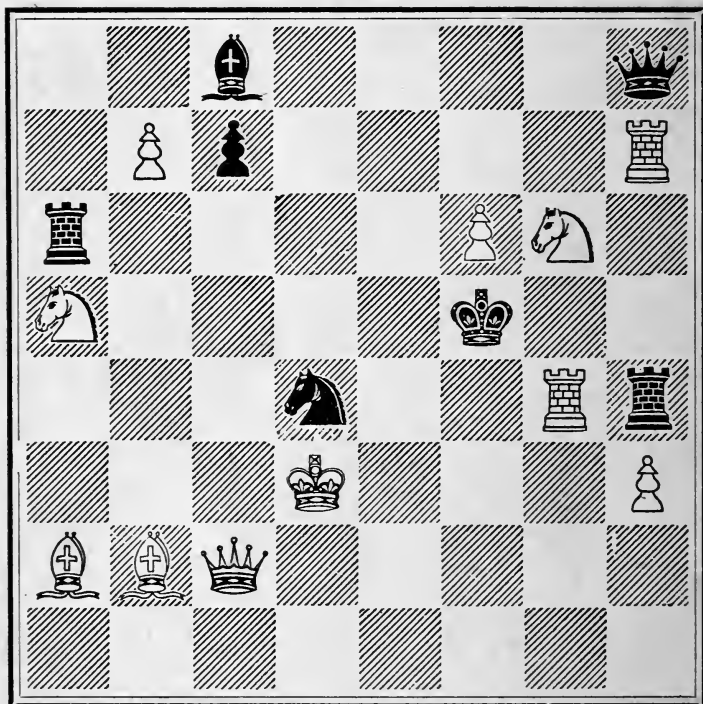


WHITE.

White to play, and compel Black to mate in Six moves.

PROBLEM LXXVIII.

BLACK.

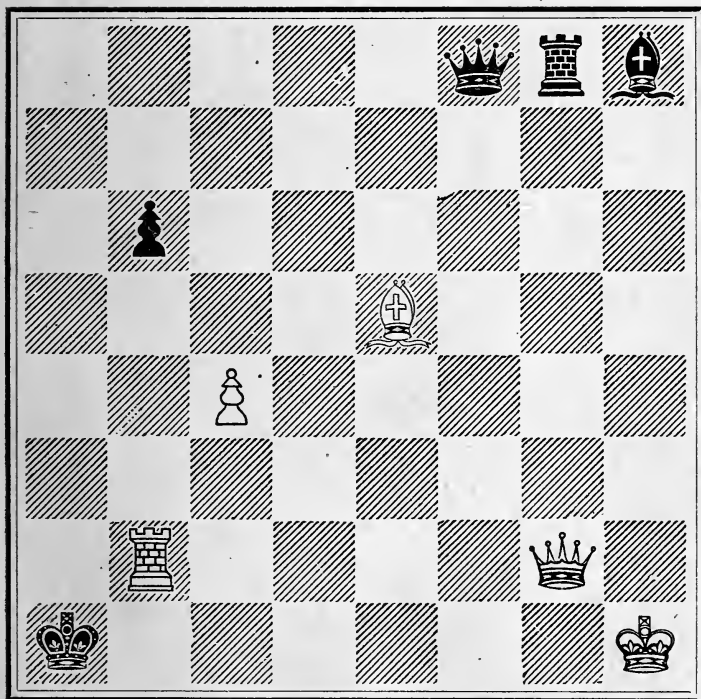


WHITE.

White to play, and compel Black to mate in Six moves.

PROBLEM LXXIX.

BLACK.

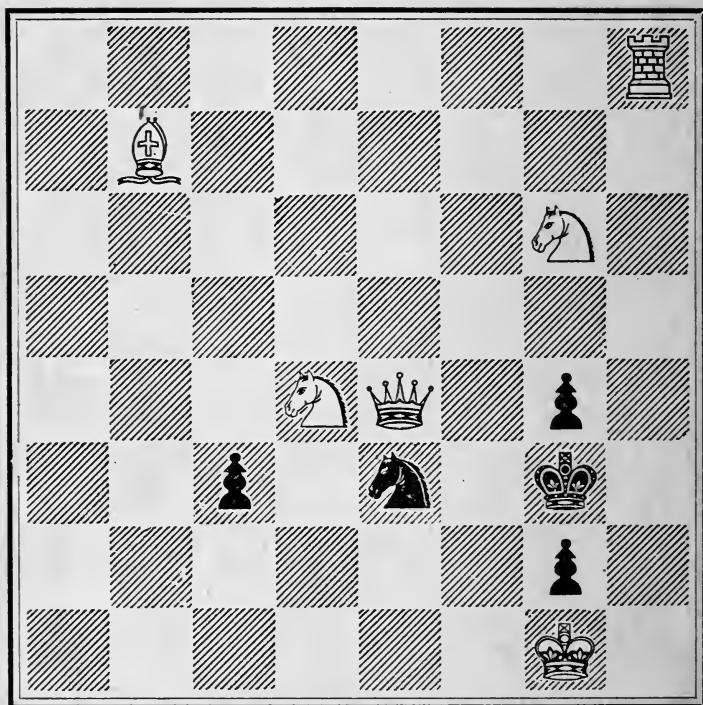


WHITE.

White to play, and compel Black to mate in Two moves.

PROBLEM LXXX.

BLACK.

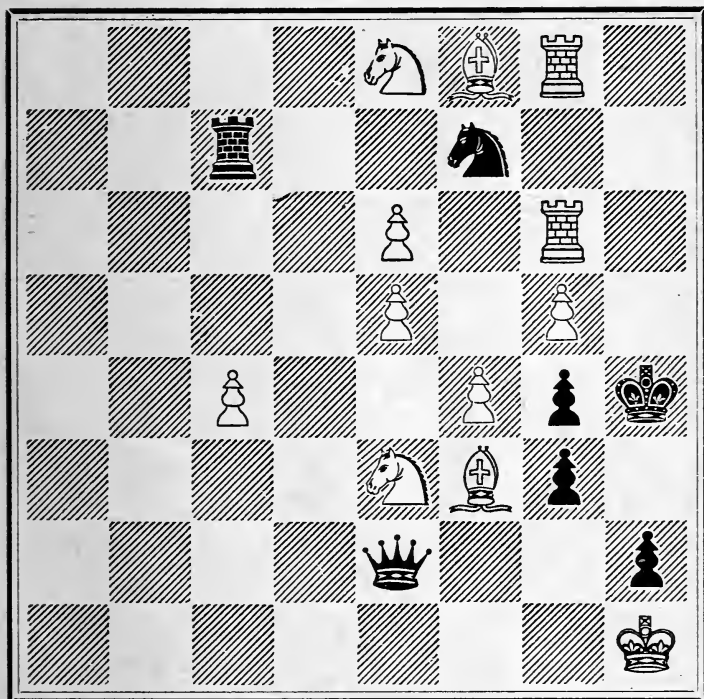


WHITE.

White to play, and compel Black to mate in Three moves.

PROBLEM LXXXI.

BLACK.

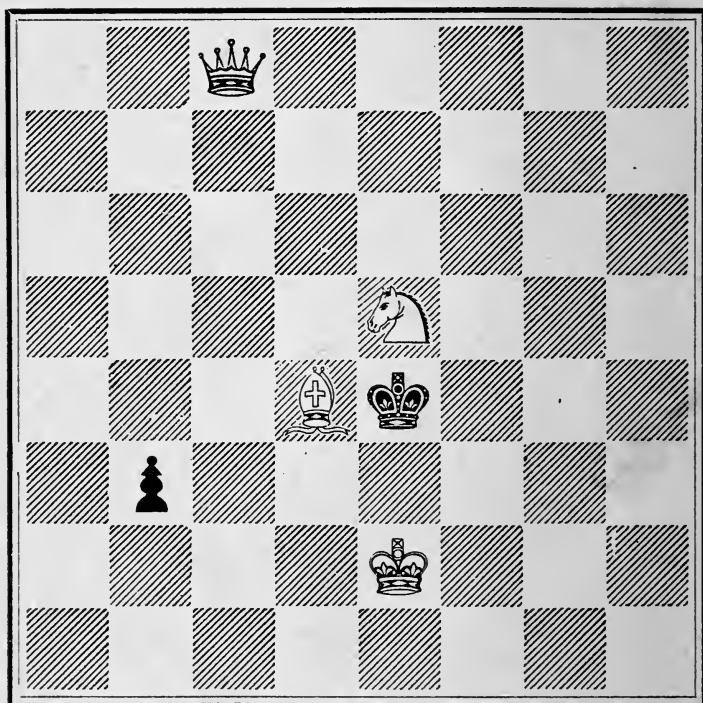


WHITE.

Either side playing first, mates in Two moves;
Or White compels Black to mate in Four moves.

PROBLEM LXXXII.

BLACK.

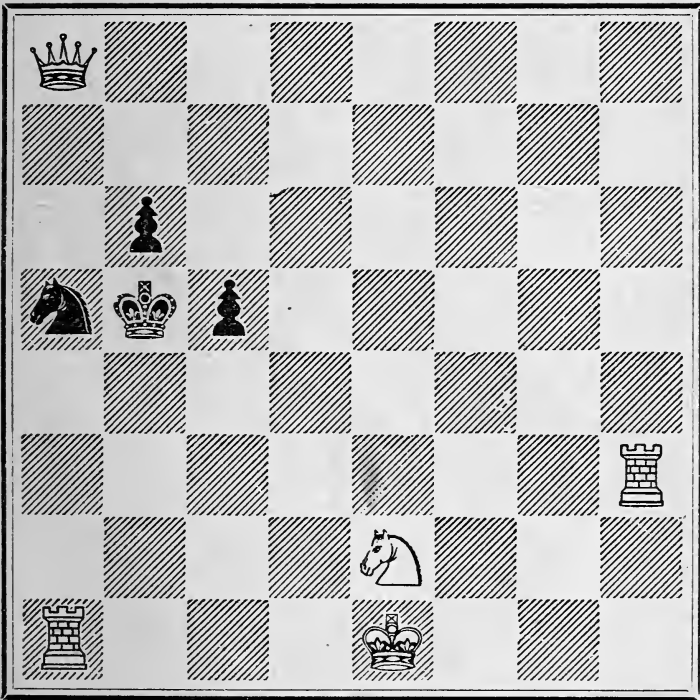


WHITE.

White to play, and mate in Two moves.

PROBLEM LXXXIII.

BLACK.

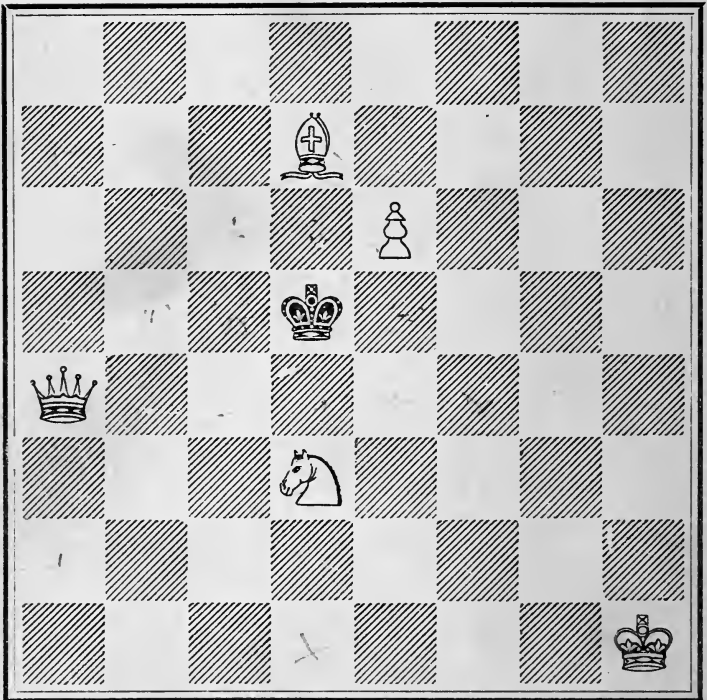


WHITE.

White to play, and mate in Two moves.

PROBLEM LXXXIV.

BLACK.

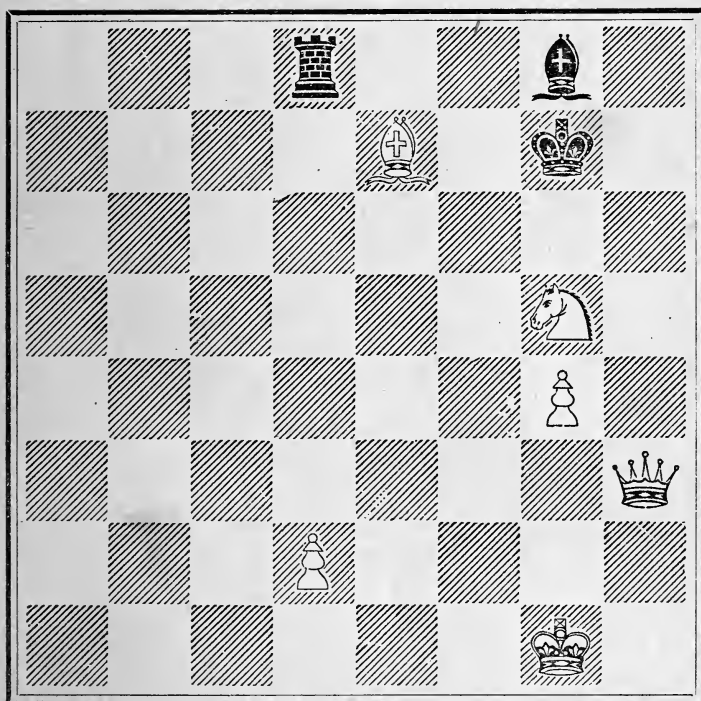


WHITE.

White to play, and mate in Two moves.

PROBLEM LXXXV.

BLACK.

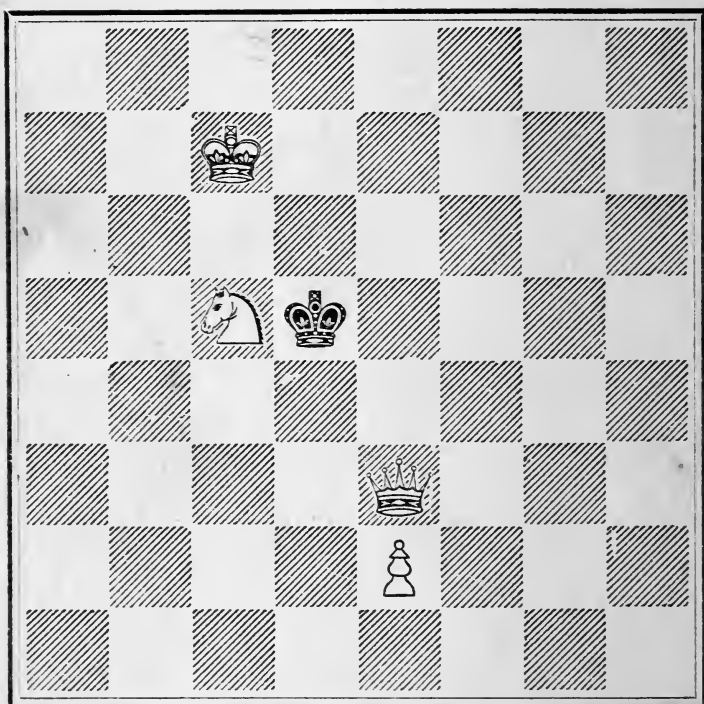


WHITE.

White to play, and mate in Two moves.

PROBLEM LXXXVI.

BLACK.

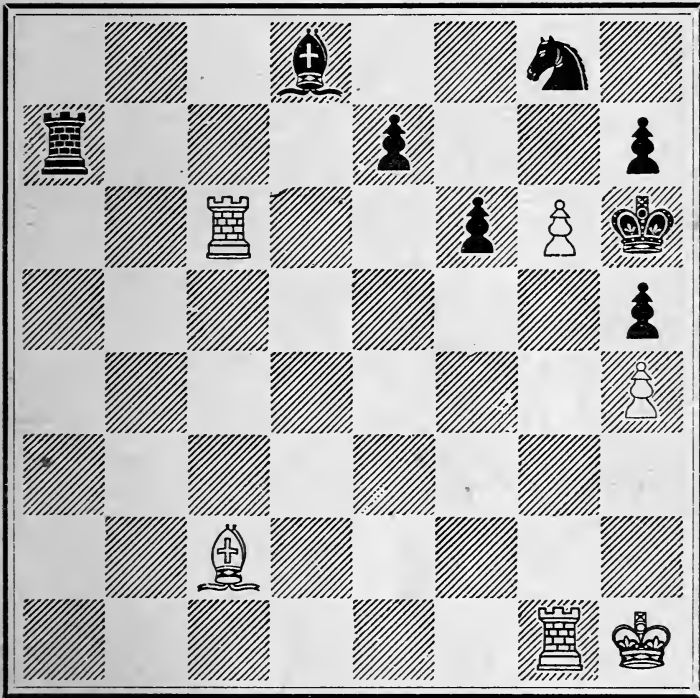


WHITE.

White to play, and mate in Two moves.

PROBLEM LXXXVII.

BLACK.

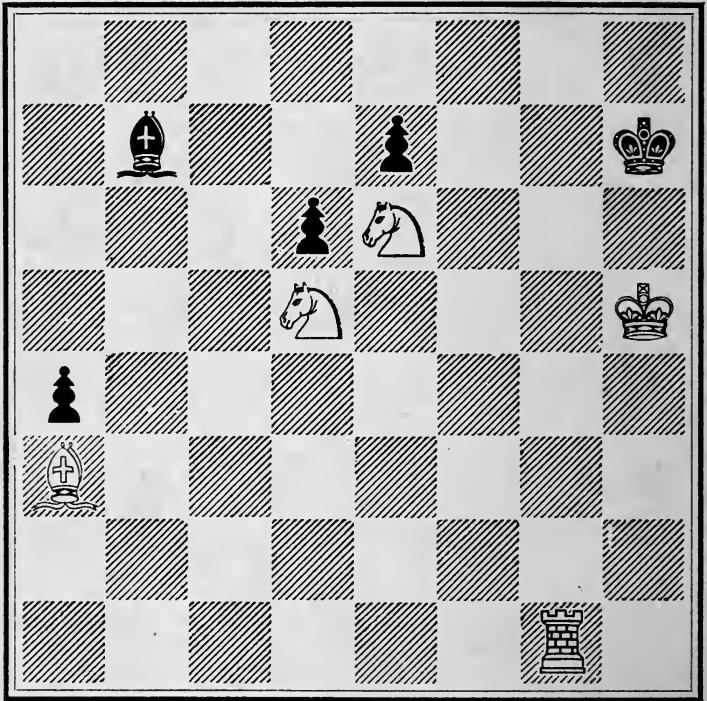


WHITE.

White to play, and mate in Two moves.

PROBLEM LXXXVIII.

BLACK.

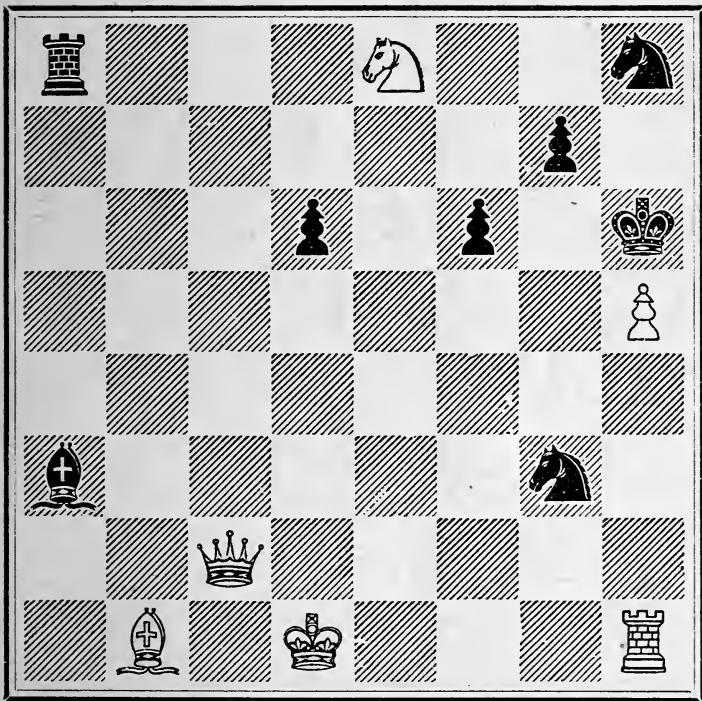


WHITE.

White to play, and mate in Two moves.

PROBLEM LXXXIX.

BLACK.

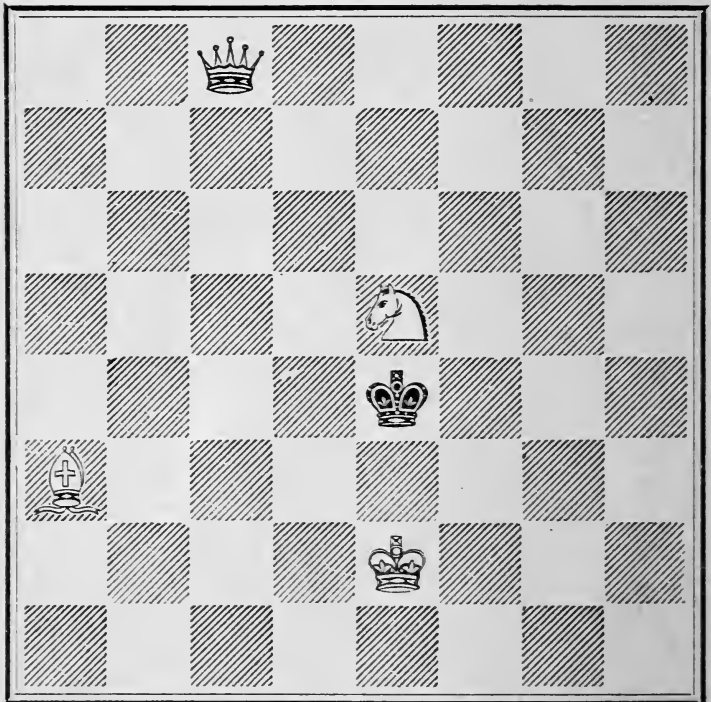


WHITE.

White to play, and mate in Two moves.

PROBLEM XC.

BLACK:

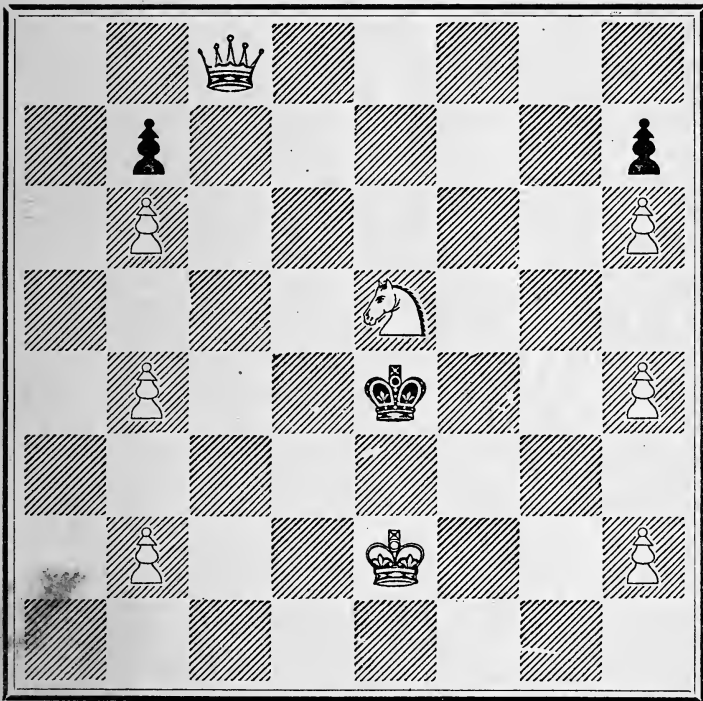


WHITE.

White to play, and mate in Two moves.

PROBLEM XCI.

BLACK.

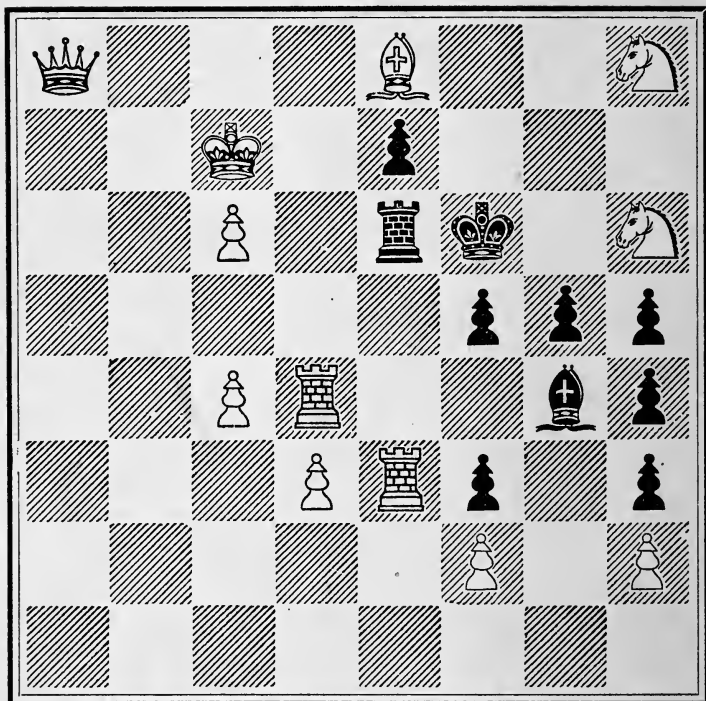


WHITE.

White to play, and mate in Two moves.

PROBLEM XCII.

BLACK.

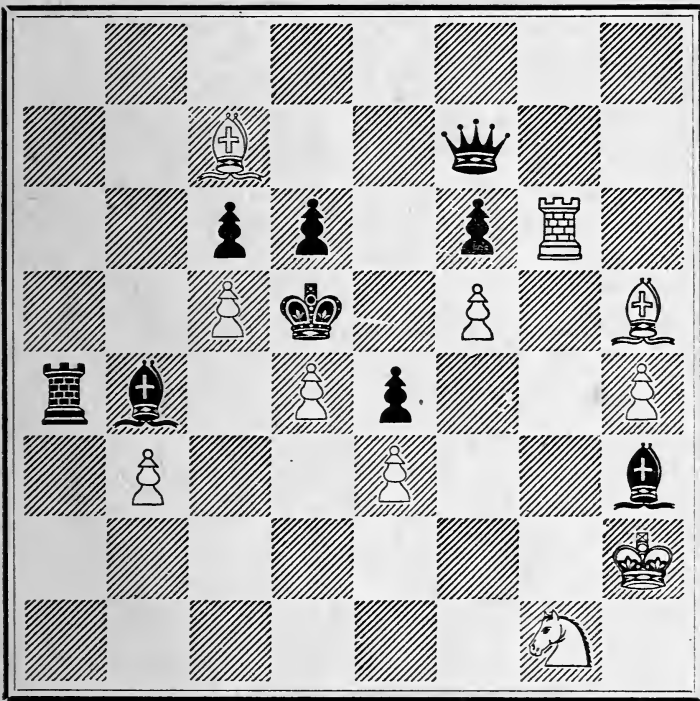


WHITE.

White to play, and mate in Three moves.

PROBLEM XCIII.

BLACK.

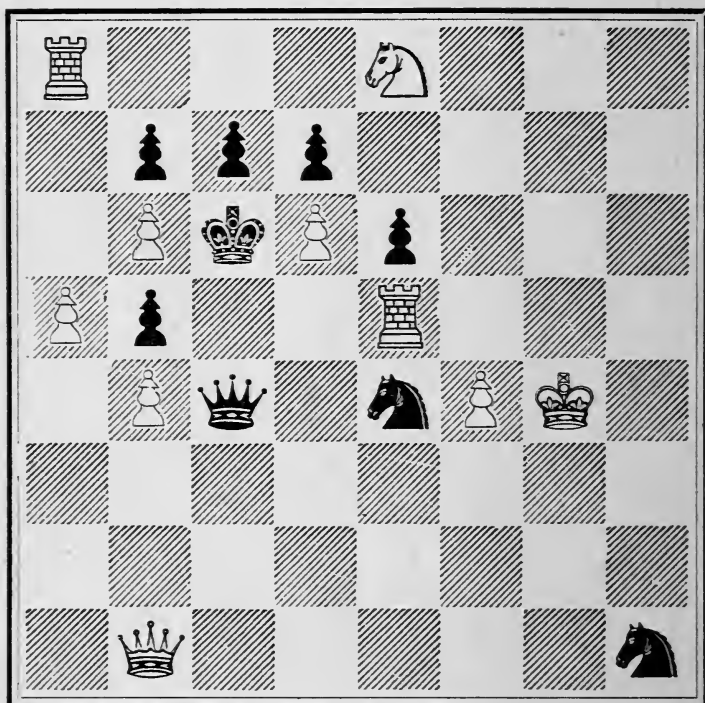


WHITE.

White to play, and mate in Three moves.

PROBLEM XCIV.

BLACK.

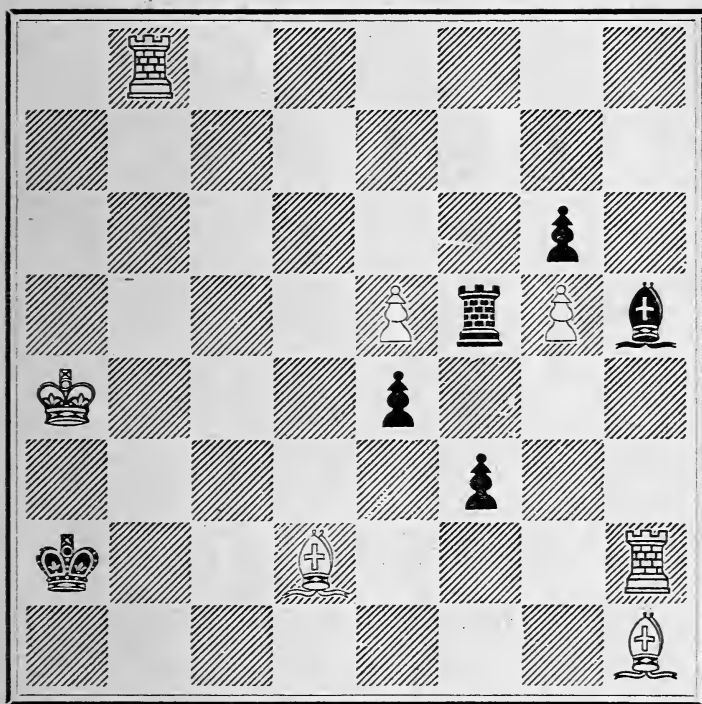


WHITE.

White to play, and mate in Three moves.

PROBLEM XCV.

BLACK.

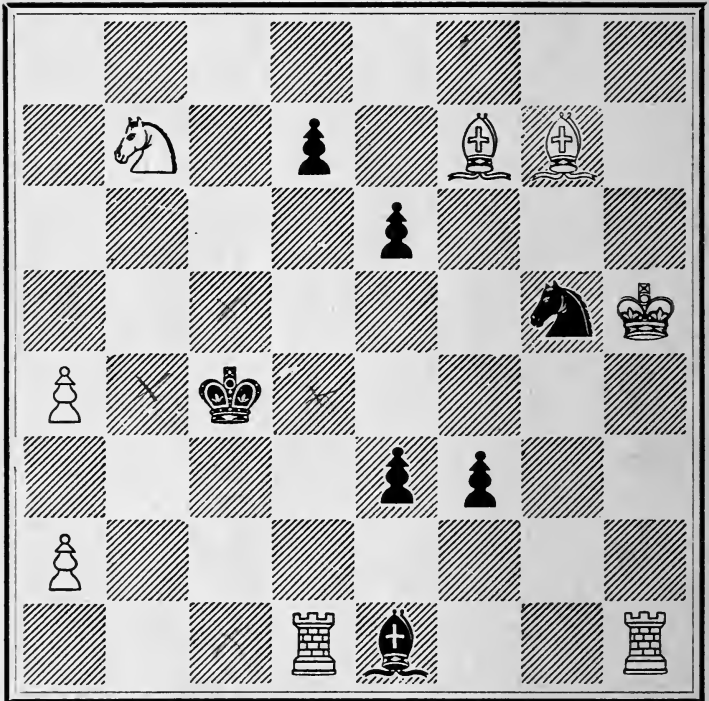


WHITE.

White to play, and mate in Three moves.

PROBLEM XCVI.

BLACK.

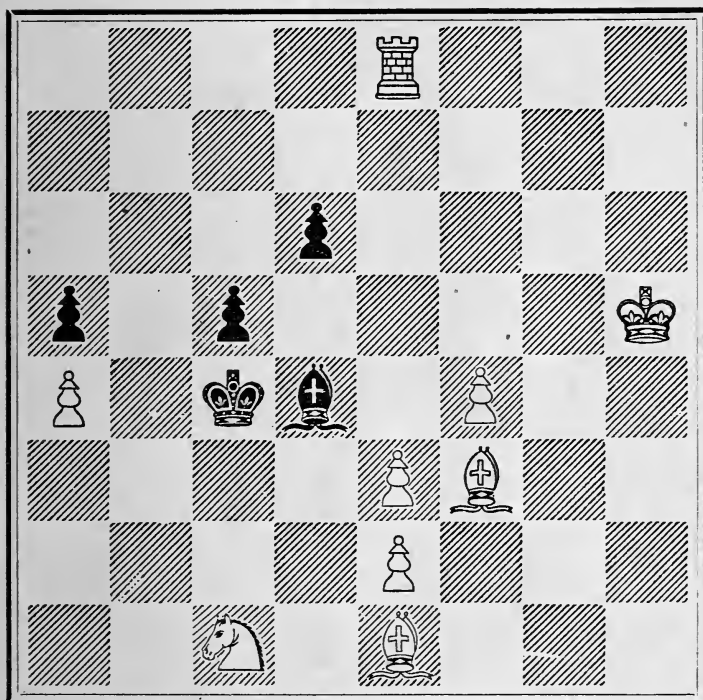


WHITE.

White to play, and mate in Three moves.

PROBLEM XCVII.

BLACK.

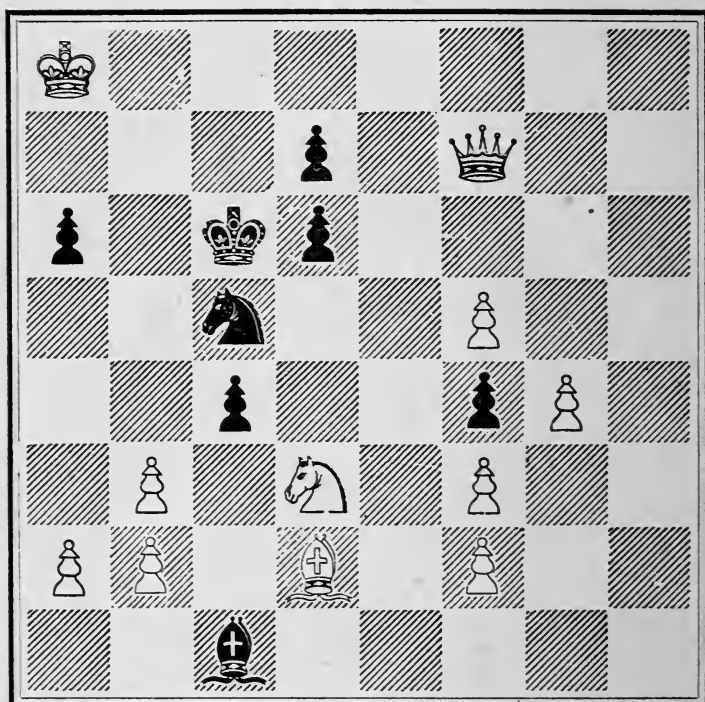


WHITE.

White to play, and mate in Three moves.

PROBLEM XCVIII.

BLACK.

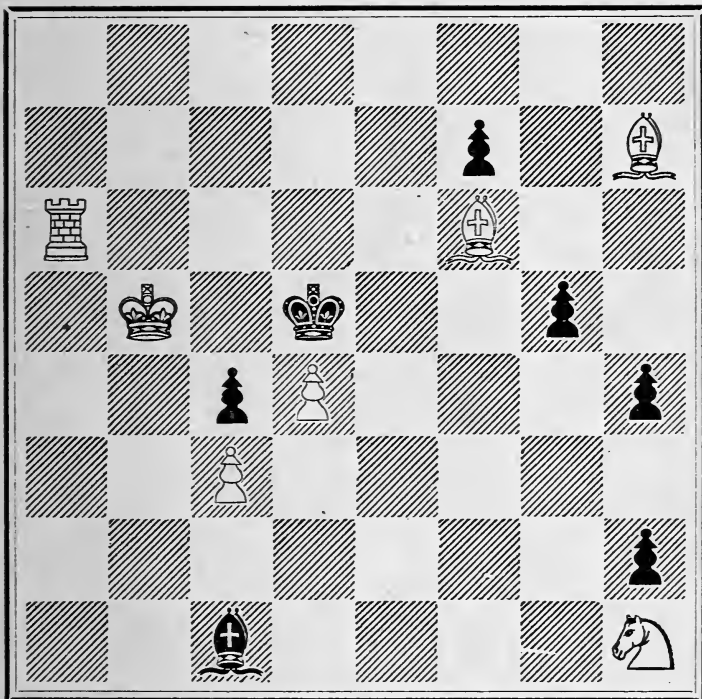


WHITE.

White to play, and mate in Three moves.

PROBLEM XCIX.

BLACK.

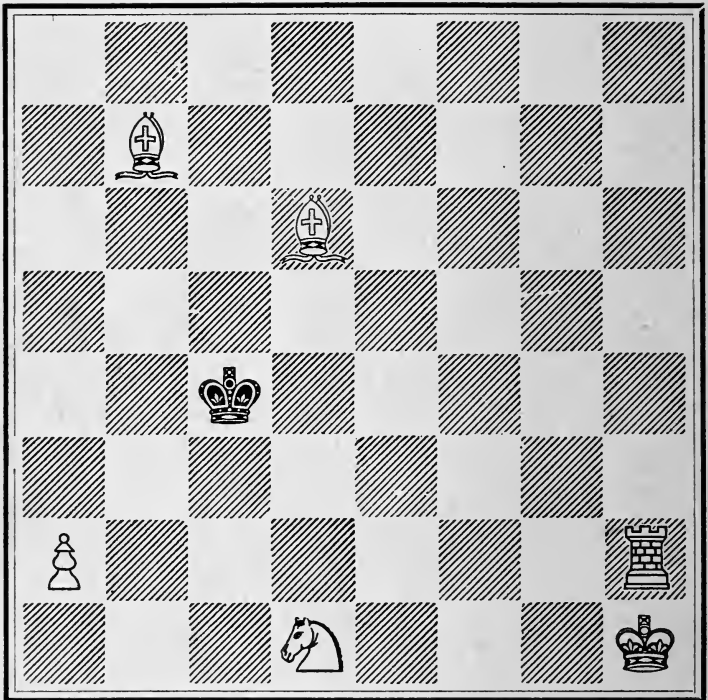


WHITE.

White to play, and mate in Three moves.

PROBLEM C.

BLACK.

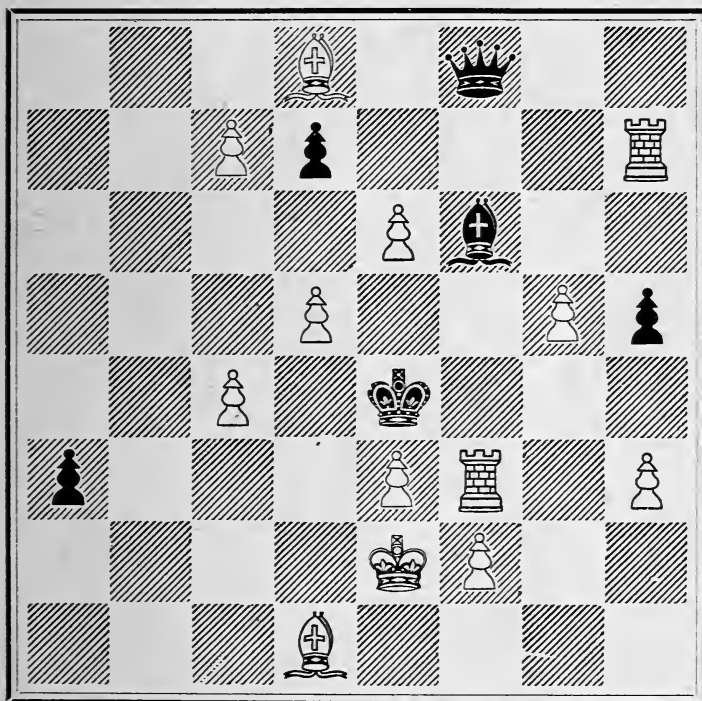


WHITE.

White to play, and mate in Three moves.

PROBLEM CI.

BLACK.

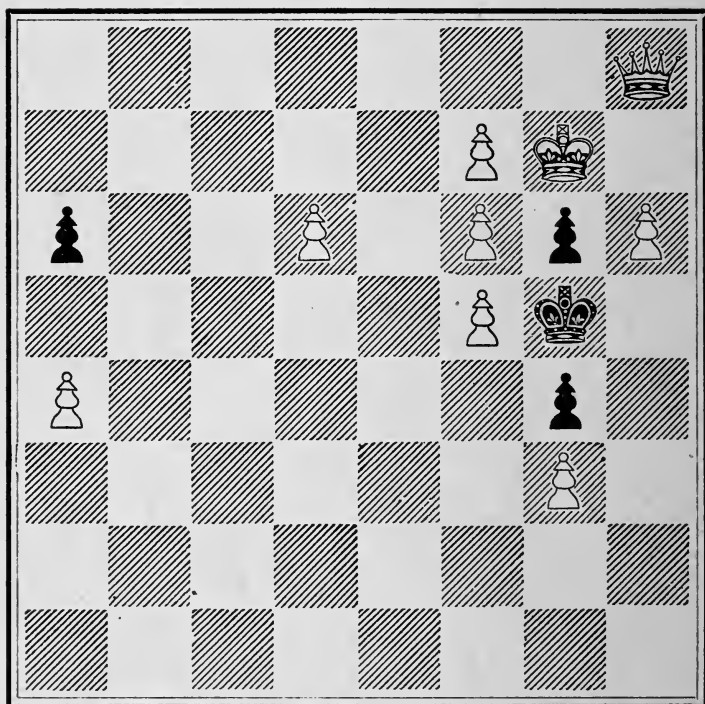


WHITE.

White to play, and mate in Three moves.

PROBLEM CII.

BLACK.

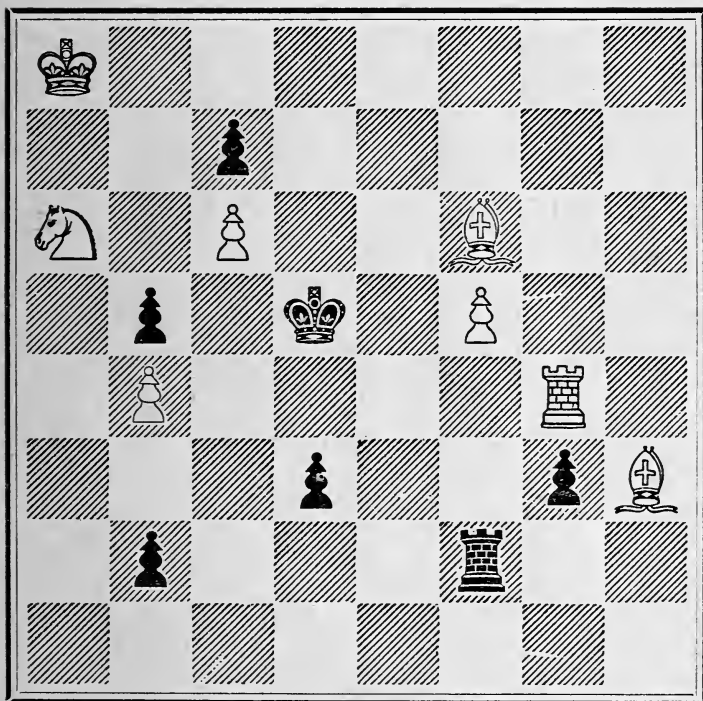


WHITE.

White to play, and mate in Three moves.

PROBLEM CIII.

BLACK.

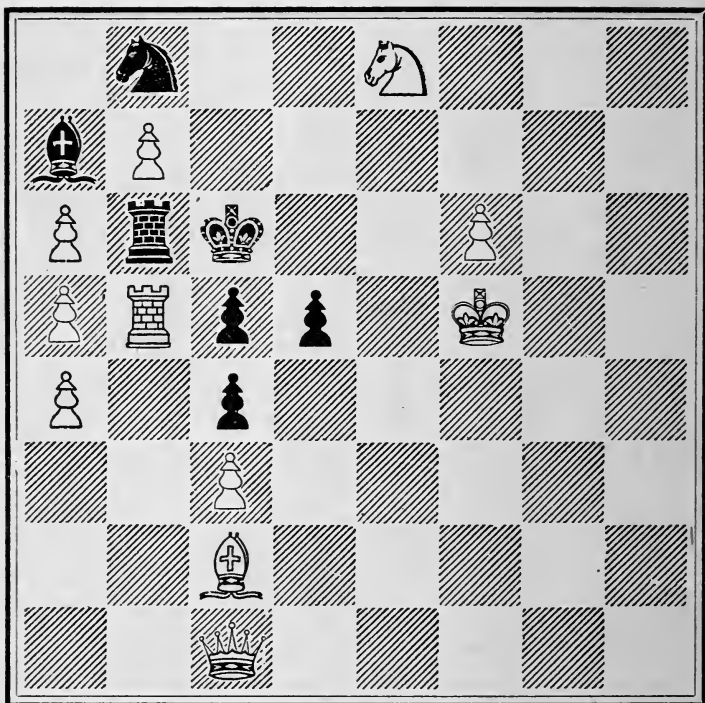


WHITE.

White to play, and mate in Three moves.

PROBLEM CIV.

BLACK.

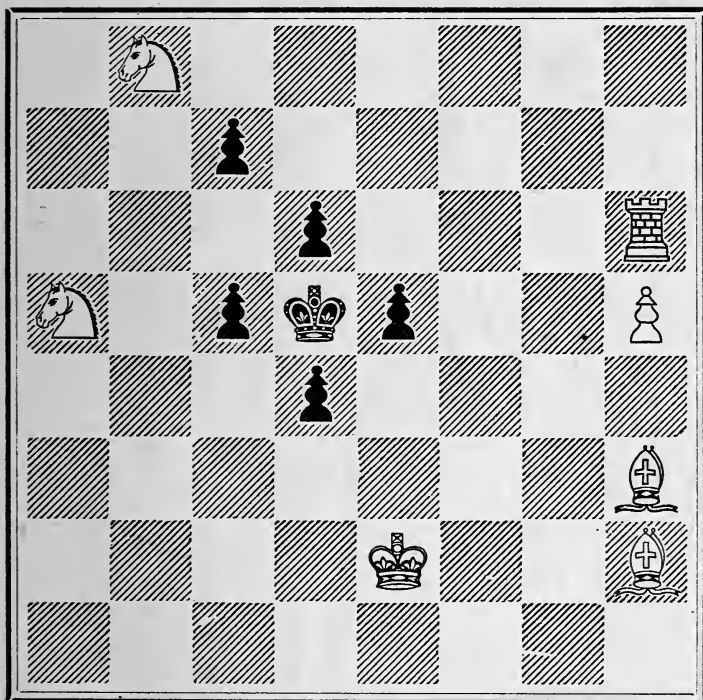


WHITE.

White to play, and mate in Three moves.

PROBLEM CV.

BLACK.

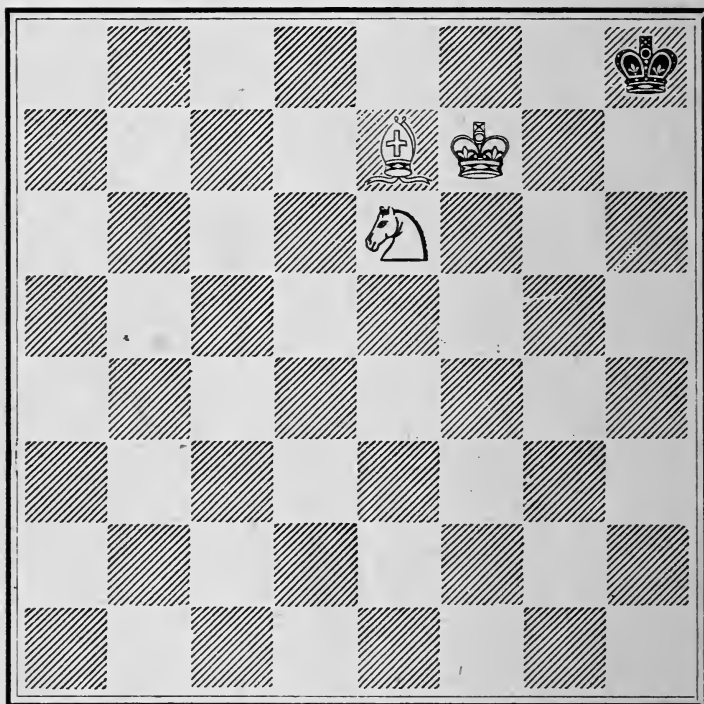


WHITE.

White to play, and mate in Three moves.

PROBLEM CVI.

BLACK.

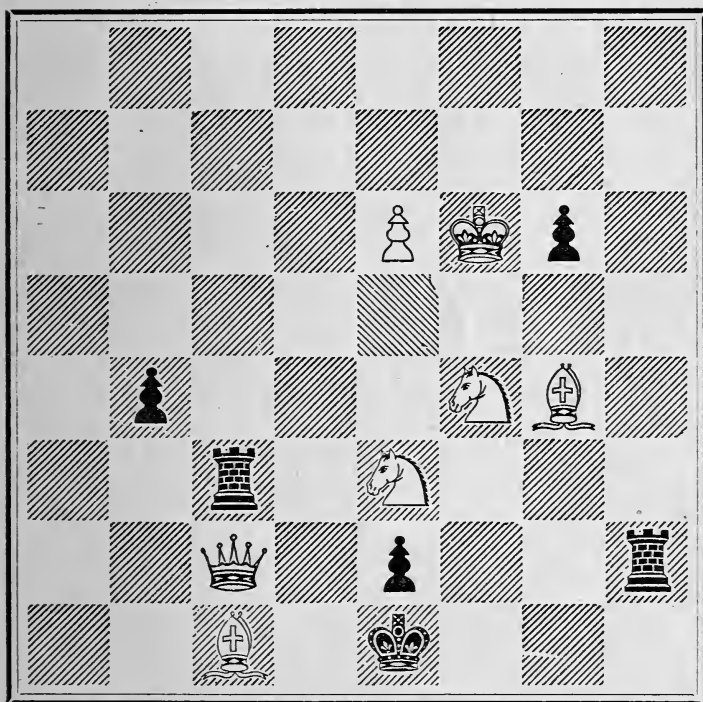


WHITE.

White to play, and mate in Three moves.

PROBLEM CVII.

BLACK.

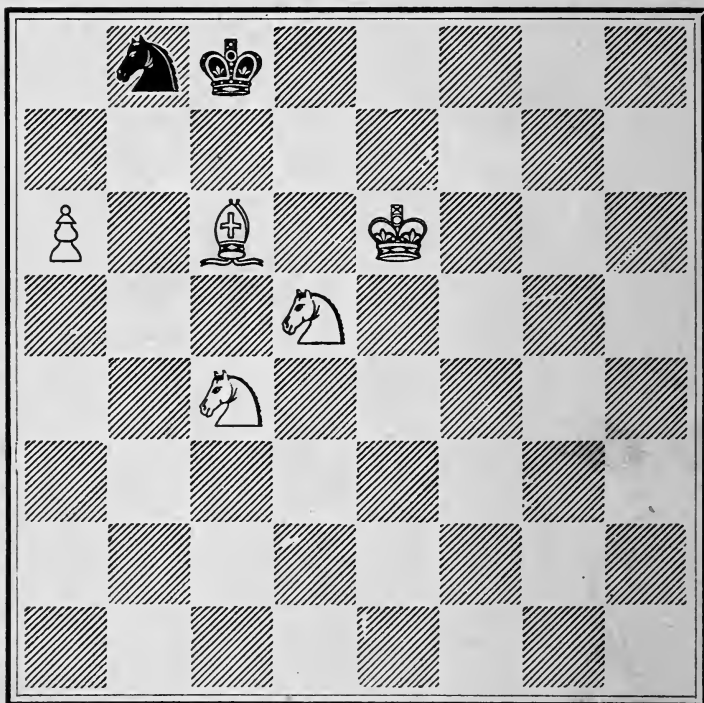


WHITE.

White to play, and mate in Three moves.

PROBLEM CVIII.

BLACK.

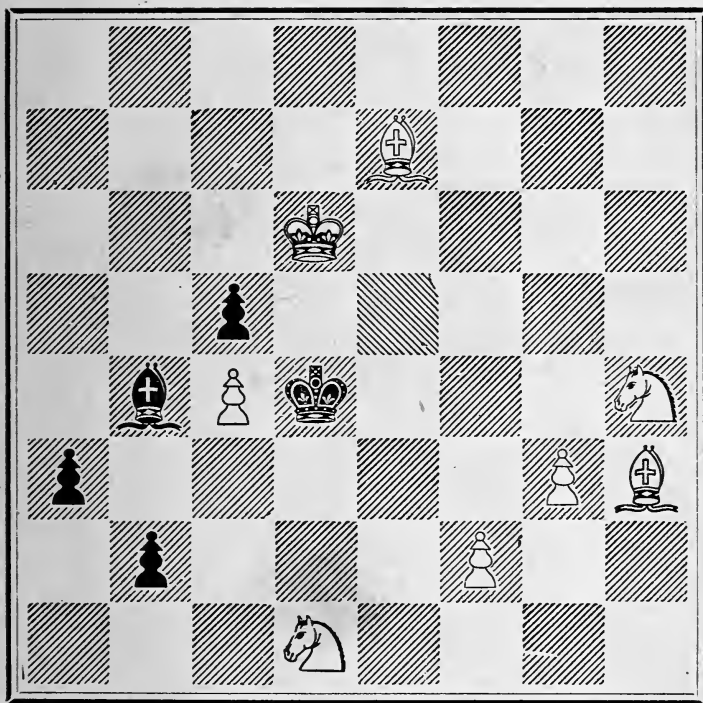


WHITE.

White to play, and mate in Three moves.

PROBLEM CIX.

BLACK.

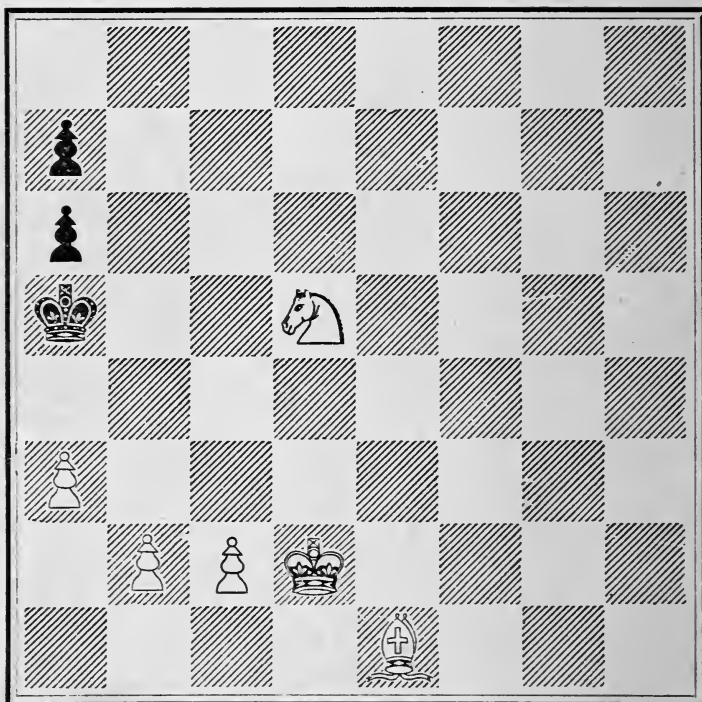


WHITE.

White to play, and mate in Three moves.

PROBLEM CX.

BLACK.

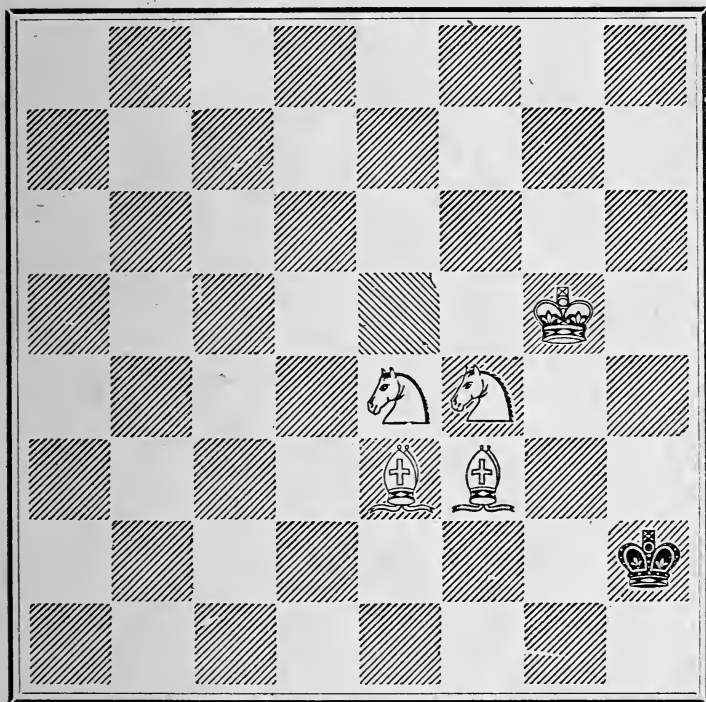


WHITE.

White to play, and mate in Three moves.

PROBLEM CXI.

BLACK.

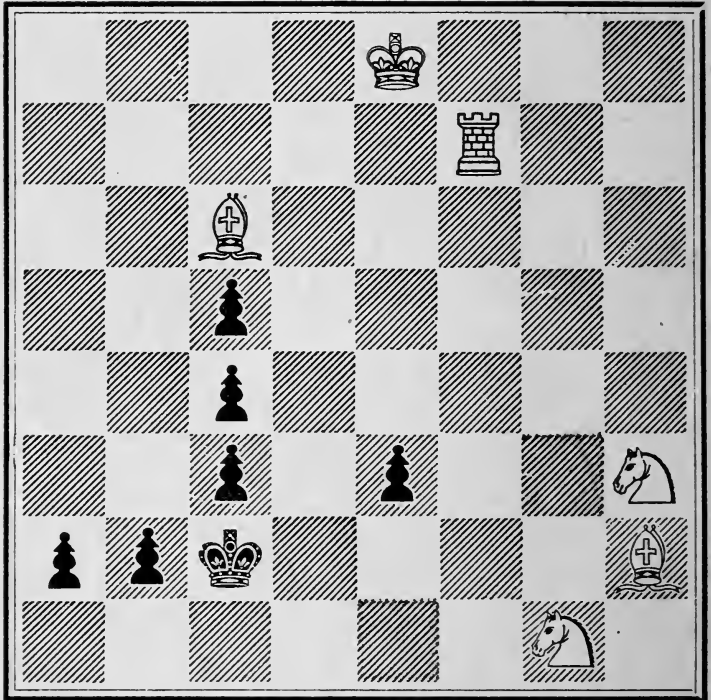


WHITE.

White to play, and mate in Three moves.

PROBLEM CXII.

BLACK.

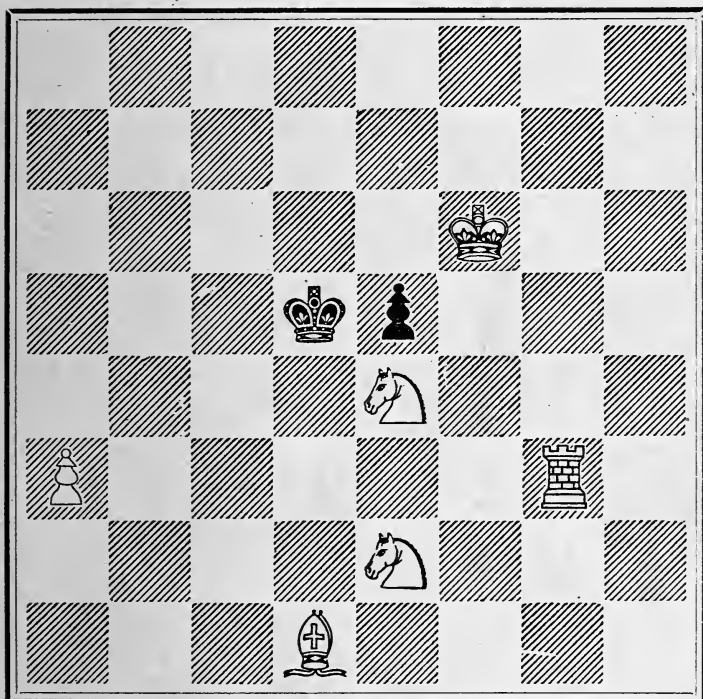


WHITE.

White to play, and mate in Three moves.

PROBLEM CXIII.

BLACK.

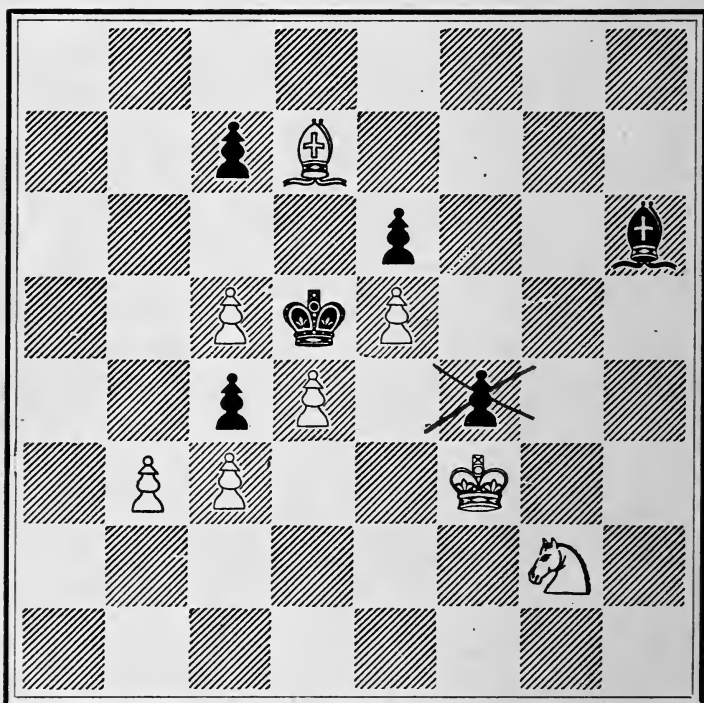


WHITE.

White to play, and mate in Three moves.

PROBLEM CXIV.

BLACK.



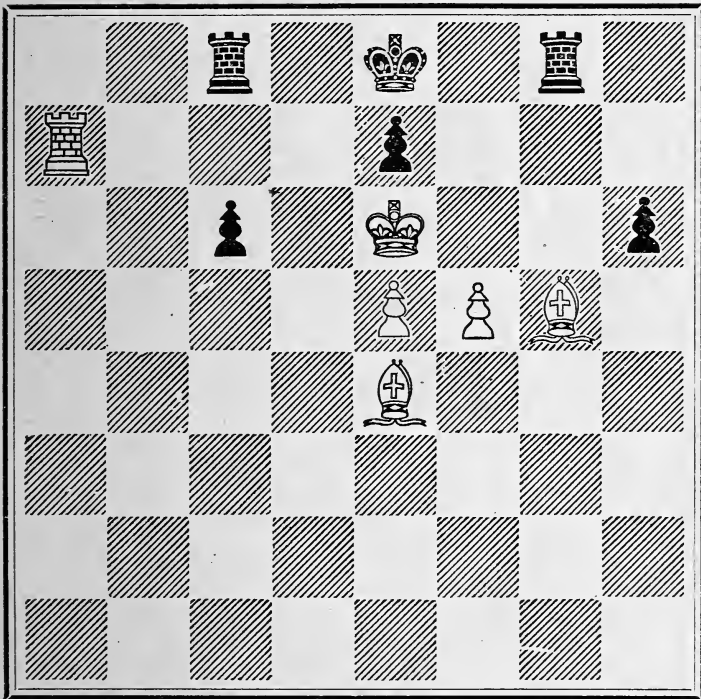
WHITE.

White to play, and mate in Four moves.

La rapeta

PROBLEM CXV.

BLACK.



WHITE.

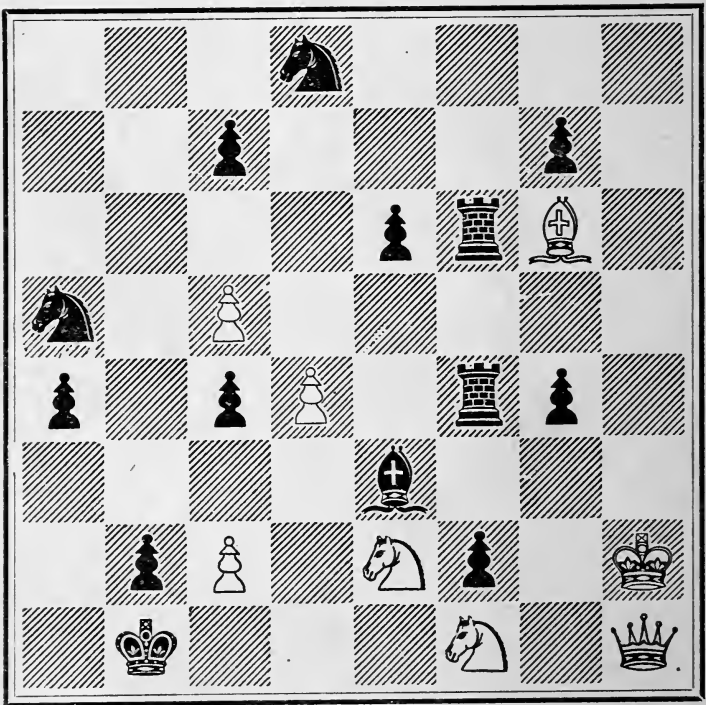
White to play, and mate in Four moves.

PROBLEM CXVI.

NAPOLEON'S RETREAT FROM MOSCOW.

BY PETROFF.

BLACK.—FRENCH.



Moscow. WHITE.—RUSSIANS.

The Cossacks (White Knights) drive Napoleon from Moscow, across the Berezina, the diagonal commanded by White Queen, and finally mate him in Fourteen moves, on his arrival in Paris.

SOLUTIONS.

I.

WHITE.

1. B. to Q. 2.
2. Q. to K. 3 (ch.)
3. Q. to Q. 3, Mate.

BLACK.

1. K. moves.
2. K. moves.

II.

1. R. takes R.
2. B. to R. 4.
3. R. or B. Mates.

1. P. to K. 4. (best)
2. Any move.

III.

1. P. Queens.
2. B. takes P.
3. Q. Mates.

1. P. to K. 4. (A)
2. Any move.

(A.)

2. Q. to K. 8 (ch.)
3. Q. takes B. P. Mate.

1. P. takes P.
2. K. to K. 3.

IV.

WHITE.

1. R. takes P.
2. P. Queens.
3. Q. Mates.

BLACK.

1. K. takes P. (A)
2. Any move.

(A.)

2. R. to K. 8 (ch.)
3. R. Mates.

1. K. to Q. or K. sq.
2. Any move.

V.

1. Q. P. takes P.
2. B. to Q. 7 (ch.)
3. R. takes Kt. Mate.

1. B. to R. 2. (best)
2. K. moves.

VI.

1. Kt. to Kt. 3 (ch.)
2. Kt. to B. 3 (ch.)
3. B. to Kt. 5, Mate.

1. K. moves.
2. K. moves.

VII.

1. B. to Q. 3 (ch.)
2. Kt. to Q. 4 (ch.)
3. R. takes Q. Mate.

1. P. to B. 5. (best)
2. K. moves.

VIII.

1. Kt. to Q. 4 (ch.)
2. K. B. takes P. Mate.

1. K. to Q. 4.

IX.

WHITE.

1. K. to B. 4.
2. Kt. or P. Mates.

BLACK.

- Any move.

X.

1. P. to Q. Kt. 7.
2. P. Queens.
3. Q. Mates.

1. Any move.
2. Any move.

XI.

1. Kt. to Q. 6 (ch.)
2. R. to R. 2.
3. R. to R. 7, Mate.

1. K. to B. 2. (best)
2. Any move.

XII.

1. P. Queens.
2. R. takes P.
3. Kt. to B. 6.
4. B. or R. Mates.

1. K. takes Q. (best)
2. Any move.
3. Any move.

XIII.

1. K. P. Queens.
2. Q. to R. 4 (ch.)
3. Q. takes R. Mate.

1. R. takes R. (best)
2. R. to B. 7.

XIV.

1. K. to Kt. 7.
2. P. to K. 6.
3. P. takes P. on B. 6.
4. P. to B. 7, Mate.

1. P. to Q. B. 3.
2. P. takes P. (best)
3. Any move.

XV.

- WHITE.
1. R. to K. B. 4 (ch.)
 2. R. to K. 3, Mate.

- BLACK.
1. R takes R.

XVI.

1. Q. takes P. (ch.)
2. R. to R. 2 (ch.)
3. R. takes Q. Mate.

1. K. takes Q.
2. Q. to R. 5.

XVII.

1. R. to B. 6 (ch.)
2. K. to B. 3.
3. R. to R. 6, Mate.

1. K. to R. 4.
2. K. to R. 5.

XVIII.

1. P. to Kt. 8. (Rook)
2. R. to Kt. 6, Mate.

1. K. to K. 3.

XIX.

1. B. to B. 6.
2. P. to B. 5, Mate.

1. P. to Kt. 4.

XX.

1. Kt. to Q 7.
2. R. to B. sq.
3. R. or Kt. Mates.

1. Any move.
2. Any move.

PAGE 21.

1. K. P. takes B. P. (*en passant*) Mate.

An examination of the position will show that Black's previous move must have been P. to K. B. 4.

XXII.

WHITE.

1. Kt. to Kt. 7 (ch.)
2. B. Mates.

BLACK.

1. Any move.

XXIII.

1. Q. to Q. 5 (ch.)
2. Kt. to B. 4, Mate.

1. K. takes Q.

XXIV.

1. Q. to Q. R. 8.
2. Q. Mates R. 8, R. sq. or Q. 5.

1. Any move.

XXV.

1. Q. to Q. 5 (ch.)
2. Q. or B. Mates.

1. Any move.

XXVI.

1. Q. takes B.
2. Q. or R. Mates.

1. Any move.

XXVII.

1. Q. takes B.
2. Q. or Kt. Mates.

1. Any move.

XXVIII.

1. B. to Q. 5 (ch.)
2. P. Queens (ch.)
3. Q. to R. sq. Mate.

1. R. to Kt. 2.
2. K. to R. 2.

XXIX.

WHITE.

1. R. to Kt. 2 (ch.)
2. B. to R. 4 (ch.)
3. Kt. to Q. 4, Mate.

BLACK.

1. P. takes R. (A)
2. K. moves.

(A.)

2. B. to Kt. 4 (ch.)
3. B. takes P. Mate.

1. K. to K. 8.
2. P. to B. 6.

XXX.

1. Kt. to B. 6.
2. B. to R. 6 (ch.)
3. B takes R. Mate.

1. R. to B. 2. (best)
2. R. to Kt. 2.

XXXI.

1. Kt. to Kt. 4 (ch.)
2. Kt. to B. 6 (ch.)
3. B. or R. Mates.

1. K. to Q. 5.
2. K. moves.

XXXII.

1. B. to K. 5.
2. R. to Q. B. 8.
3. R. Mates.

1. Any move.
2. Any move.

XXXIII.

1. Q. to R. 5 (ch.)
2. Q. to Q. 5 (ch.)
3. B. Mates.

1. K. to K. 5.
2. K. or B. takes Q.

XXXIV.

WHITE.

1. R. to Q. 3 (ch.)
2. Q. to Q. 5 (ch.)
3. Kt. to B. 3, Mate.

BLACK.

1. B. takes R.
2. Q. takes Q.

XXXV.

1. P. to Kt. 5.
2. B. to Kt. 3 (ch.)
3. Q. B. to B. 3, Mate.

1. K. to B. 5. (A)
2. K. to Kt. 5.

(A.)

2. P. to Kt. 3.
3. B. to K. 4, Mate.

1. P. takes R.
2. P. moves.

XXXVI.

1. Q. to Q. B. 5 (ch.)
2. Kt. to Kt. 7 (ch.)
3. B. Mates.

1. K. takes Q. (best)
2. Moves.

XXXVII.

1. B. to K. 4.
2. B. takes B.
3. P. to R. 3, Mate.

1. B. to Kt. 7. (best)
2. P. takes B.

XXXVIII.

1. B. to R. 2.
2. B. takes B.
3. P. to R. 4, Mate.

1. B. to Kt. 6. (best)
2. P. takes B.

XXXIX.

- | WHITE. | BLACK. |
|--------------------------|----------------|
| 1. K. to Kt. 5. | 1. P. to Q. 4. |
| 2. Kt. to B. 8. | 2. P. to Q. 3. |
| 3. Kt. takes Q. P. Mate. | |

XL.

- | | |
|--------------------|--------------|
| 1. R. to B. 7. | 1. Any move. |
| 2. Kt. to B. 6. | 2. Any move. |
| 3. B. or R. Mates. | |

XLI.

- | | |
|-----------------------|---------------------|
| 1. Q. to K. 5. | 1. Kt. to B. 7. (A) |
| 2. R. takes Kt. (ch.) | 2. Moves. |
| 3. Q. Mates. | |

(A.)

- | | |
|------------------------|----------------|
| 2. Q. to Q. B. 3 (ch.) | 1. B. to B. 7. |
| 3. B. to Kt. 4, Mate. | 2. K. to K. 7. |

XLII.

- | | |
|--------------------------|--------------|
| 1. P. to B. 3 (dis. ch.) | 1. K. moves. |
| 2. R. to Q. Kt. 6. | 2. Moves. |
| 3. B. or R. Mates. | |

XLIII.

- | | |
|----------------------|----------------|
| 1. Q. to K. B. 7. | 1. Kt. moves. |
| 2. Q. takes P. (ch.) | 2. K. takes Q. |
| 3. B. to K. 4, Mate. | |

XLIV.

WHITE.

1. Q. takes K. P.
2. Q. to Q. R. 5.
3. Q. takes P. Mate.

BLACK.

1. P. moves.
2. Kt. moves.

XLV.

1. Q. to R. 8.
2. Q. takes R.
3. Q. to R. sq. Mate.

1. R. to B. 3.
2. Moves.

XLVI.

1. Q. to Kt. sq. (ch.)
2. Kt. to B. 8 (ch.)
3. P. takes Q. (becoming Kt.)
Mate.

1. R. takes Q.
2. Q. takes Kt.

XLVII.

1. Q. to Q. R. 4 (ch.)
2. B. to B. 8.
3. Q. to Q. 7, Mate.

1. K. to Q. 4. (best)
2. K. to Q. 3.

XLVIII.

1. Q. to ^PQ. 5 (ch.)
2. B. to Kt. 2.
3. P. to B. 4 (dis. ch.) Mate.

1. K. takes Q.
2. Moves.

XLIX.

1. R. to R. 4 (ch.)
2. Q. to K. B. sq.
3. P. or Q. Mates.

1. Kt takes R.
2. Moves.

L.

WHITE.

1. Kt. to R. sq.
2. Q. to Q. B. 4 (ch.)
3. Q. to Q. B. 7, Mate.

BLACK.

1. K. to B. 4. (best)
2. K. to Q. 3.

LI.

1. Q. takes Kt. (ch.)
2. B. to K. 5.
3. B. or R. Mates.

1. K. takes Q. (A)
2. Moves.

(A.)

2. Q. to B. 5 (ch.)
3. Q. to K. B. 8, Mate.

1. K. takes B.
2. Moves.

LII.

1. Q. takes P.
2. Q. to R. 5 (ch.)
3. B. or Q. Mates.

1. K. to B. 2. (A) (B)
2. Moves.

(A)

2. B. to B. 8.
3. Q. Mates.

1. K. to Q. 4.
2. K. to Q. 3.

(B.)

2. B. to R. 3 (ch.)
3. Q. Mates.

1. K. to K. 2.
2. Moves.

LIII.

WHITE.

1. Q. to Q. R. sq. (ch.)
2. Q. to R. 7 (ch.)
3. B. to K. 4 (ch.)
4. Q. to K. Kt. 7, Mate.

BLACK.

1. B. to B. 6. (best)
2. K. to Q. 4. (A)
3. Moves.

(A.)

3. Q. to K. Kt. 7 (ch.)
4. B. to K. 4. Mate.

2. K. to K. 4.
3. Moves.

LIV.

1. Q. takes B. (ch.)
2. B. to Kt. 3 (dis. ch.)
3. R. to B. 4 (ch.)
4. R. to R. 4, Mate.

1. K. takes Q. (best)
2. K. to Kt. 5.
3. Moves.

LV.

1. B. to B. 6.
2. K. takes R.
3. R. to R. 8 (ch.)
4. R. takes Kt. Mate.

1. R. to Q. 8 (ch.) (best)
2. Kt. to K. 2. (best)
3. Kt. to Kt. sq.

LVI.

1. K. to R. 5.
2. R. to R. 4.
3. Kt. to Kt. 4.
4. Kt. to K. 5, Mate.

1. Moves.
2. Moves.
3. Moves.

LVII.

- WHITE.
1. Q. takes Kt.
 2. R. to B. 2.
 3. R. to B. 6.
 4. Q. Mates.

- BLACK.
1. Moves.
 2. Moves.
 3. Moves.

LVIII.

1. Kt. to B. 3 (ch.)
2. R. to B. 6.
3. Kt. to R. 2 (ch.)
4. Kt. to Kt. 4, Mate.

1. Moves.
2. Moves.
3. Moves.

LXI. (Page 59.)

1. R. to R. 8.
2. R. to Q. Kt. 8 (ch.)
3. Kt. to B. 5 (ch.)
4. P. to Q. 3, Mate.

1. K. to Kt. 4. (best)
2. K. takes P.
3. K. to R. 4.

LX.

1. B. to K. 5 (ch.)
2. R. to K. 6 (ch.)
3. Q. to Q. 5 (ch.)
4. Q. or Kt. Mates.

1. K. takes B. (A)
2. K. to Q. 5. (best)
3. K. moves.

(A.)

2. Kt. to Kt. 4 (ch.)
3. R. to B. 2 (ch.)
4. Q. Mates.

1. K. to K. 6.
2. K. to Q. 7.
3. Moves.

LXI. (Page 61.)

WHITE.

1. Kt. takes Kt.
2. B. to B. 4 (ch.)
3. B. to B. 3 (ch.)
4. Kt. Mates.

BLACK.

1. K. to Q. 4. (best)
2. K. takes Kt.
3. K. to K. B. 5.

LXII.

1. B. takes R.
2. P. takes Q.
3. B. to B. 3.
4. B. to Kt. 3, Mate.

1. Q. takes B. P. (best)
2. Moves.
3. Moves.

LXIII.

1. Kt. takes B.
2. Kt. to K. 4.
3. K. to Kt. 2.
4. Kt. to B. 3, Mate.

1. K. to R. 3 or 5. (best)
2. Moves.
3. Moves.

LXIV.

1. Q. to K. 4 (ch.)
2. Q. to K. 8 (ch.)
3. B. to R. 2 (ch.)
4. B. takes B. Mate.

1. P. to Q. 4 (best)
2. K. to Q. 3 (best)
3. B. to K. 4.

LXV.

1. K. to Kt. 3.
2. K. to R. 3.
3. Kt. to Kt. 3.
4. Kt. to Q. 2.
5. Kt. Mates.

1. Moves.
2. Moves.
3. Moves.
4. Moves.

LXVI.

WHITE.

1. Kt. takes R.
2. Kt. to B. sq.
3. Kt. takes P.
4. Kt. takes B. P.
5. Kt. takes Kt. P.
6. Kt. takes B. P. Mate.

BLACK.

1. K. Moves, (best)
2. Moves.
3. Moves.
4. Moves.
5. Moves.

LXVII.

1. Q. to K. 3.
2. Q. to B. 2.
3. Q. to B. sq. (ch.)

1. P. to Q. 7.
2. P. to Q. 8, becoming Queen or Rook, (A)
3. Q takes Q. Mate.

(A)

3. Q. to Kt. 2 (ch.)

2. P. becomes Kt. or B.
3. P. takes Q. Mate.

LXVIII.

1. Q. to K. 8 (ch.)
3. R. or R. 5 (ch.)
3. Kt. to B. 3 (ch.)

1. B. takes Q.
2. B. takes R.
3. B. takes Kt. Mate.

LXIX.

1. Q. to Q. R. 3.
2. Q. to R. 4. (ch.)
3. Kt. to B. 6 (ch.)

1. B. to B. 7(A) (B)
2. B. takes Q.
3. B. takes Kt. Mate.

(A.)

1. Kt. to Kt. 5 (ch.)
2. Kt. to B. 6 (ch.)

1. B. to Q. 6.
2. B. takes Kt.
3. B. takes Kt. Mate.

(B.)

2. R. to Q. 5 (ch.)
3. Kt. to B. 6 (ch.)

1. B. to R. 7.
2. B. takes R. (ch.)
3. B. takes Kt. Mate.

LXX.

WHITE.

1. B. to Kt. 2.
2. Kt. to K. 4 (ch.)
3. Q. to B. 2 (ch.)
4. Kt. to Q. 3 (ch.)

BLACK.

1. Kt. to Kt. 6 (best)
2. Kt. takes Kt.
3. Kt. takes Q.
4. Kt. takes Kt. Mate.

LXXI.

1. B. to Q. R. 2
2. Kt. to Kt. 6 (ch.)
3. R. to Q. 4 (ch.)
4. Kt. to B. 3 (ch.)

1. B. to Q. R. 4. (best)
2. B. takes Kt.
3. B. takes R. (ch.)
4. B. takes Kt. Mate.

LXXII.

1. Kt. to K. 5.
2. Kt. to B. 4 (ch.)
3. B. to B. sq. (ch.)
4. R. to K. sq. (ch.)

1. Q. to B 7, etc.
2. Q. takes Kt.
3. Q. takes B.
4. Q. takes R. Mate.

LXXIII.

1. Q. to Kt. 3 (ch.)
2. B to Q. R. 2.
3. Kt. to Kt. 6 (ch.)
4. R. to Q. 4 (ch.)
5. Kt. to B. 3 (ch.)

1. R. takes Q.
2. B. to B. 2 or R. 4.
3. B. takes Kt.
4. B. takes R. (ch.)
5. B takes Kt. Mate.

LXXIV.

1. Q. to Q. 8.
2. Kt. to B 6. (ch.)
3. R. to K. 8 (ch.)
4. R. to R. 5 (ch.)
5. Kt. to B. 3 (ch.)

1. B. to Q. 2 (best.)
2. B. takes Kt.
3. B. takes R.
4. B. takes R.
5. B. takes Kt. Mate.

Problems

LXXV.

WHITE.

1. K. to B. 4 (ch.)
2. K to B. 3 (ch.)
3. Q. to Q. B. 4 (ch.)
4. R. to Q. 4 (ch.)
5. Q. takes P. (ch.)

BLACK.

1. Moves.
2. Moves.
3. Moves.
4. Moves.
5. B. takes Q. Mate.

LXXVI.

1. Kt. to K. 4 (ch.)
2. Q. to Q. sq. (ch.)
3. R. to Q. 7 (ch.)
4. R. to Q. 5 (ch.)
5. B. to K. 5 (ch.)

1. K. to Q. 5.
2. B. takes Q.
3. Q. takes R.
4. Q takes R.
5. Q. takes B. Mate.

LXXVII.

1. Kt. to R. 4 (ch.)
2. Kt. to R. 3 (ch.)
3. Q. to K. 4 (ch.)
4. R. to Q. B. 4 (ch.)
5. Kt. to Kt. 2 (ch.)
6. B. to K. 3 (ch.)

1. K. to B. 5.
2. Q. takes Kt.
3. K. takes Q.
4. K. to Q. 6.
5. K. to Q. 7.
6. B. takes B. Mate.

LXXVIII.

1. K. takes Kt. (ch.)
2. K. to B. 4 (ch.)
3. K. to Kt. 5 (ch.)
4. P. takes B. (bec. Kt.) (ch.)
5. R. to Q. 4 (ch.)
6. Kt. to Q. Kt. 7 (ch.)

1. K. takes P.
2. K. to K. 3.
3. K. to Q. 3.
4. Q. takes Kt.
5. R. takes R.
6. Q. takes Kt. Mate.

LXXIX.

1. R. to Kt. 4 (ch.)
2. Q. to R. 8 (ch.)

1. B. takes B.
2. Q. takes Q. Mate.

LXXX.

WHITE.

1. Q. to Q. 3.
2. Q. to B. 3.
3. Kt. to K. 2 (ch.)

BLACK.

1. P. Moves.
2. P. bec. Kt. (A.B.)
3. Kt. takes Kt. Mate.

(A.)

3. Q. takes Kt. (ch.)

2. P. bec. B.
3. B. takes Q. Mate.

(B.)

3. Q. to K. sq. (ch.)

2. P. bec. Q. or R.
3. Q. or R. takes Q. Mate.

LXXXI.

- White
1. R. to R. 8 (ch.)
 2. R. to R. 6 Mate.

- Black
1. Q. to K. 8 (ch.)
 2. Q. Mates.

- White
1. Kt. to B. 5 (ch.)
 2. Kt. to Kt. 7 (ch.)
 3. Kt. to K. 7 (ch.)
 4. B. to K. 4 (ch.)

1. K. takes R.

1. Any Move.

1. K. to R. 4.
2. K. takes R.
3. Moves.
4. Q. takes B. Mate.

LXXXII.

1. B. to Q. Kt. 2.
2. Q. Mates.

1. K. Moves.

LXXXIII.

1. R. to Q. Kt. 3 (ch.)
2. Q. Mates at R. 4 or Kt. 8.

1. Moves.

LXXXIV.

WHITE.

1. B. to B. 8.
2. Q. to Q. 7 Mate.

BLACK.

1. K. to Q. 3.

LXXXV.

1. Q. to R. 8 (ch.)
2. B. or Q. Mates.

1. Any Move.

LXXXVI.

1. Kt to R. 6.
2. Q. to Q. 3, Mate.

1. K. to B. 5.

LXXXVII.

1. P. takes P.
2. P. takes Kt. bec. Kt. Mate.

1. Any Move.

LXXXVIII.

1. B. to Kt. 2.
2. Kt to B. 8 Mate.

1. Any Move.

LXXXIX.

1. Q. to Q. 2 (ch.)
2. P. takes P. in passing, Mate.

1. P. to Kt. 4.

XC.

1. B. to Kt. 2.
2. Q. Mates.

1. Any Move.

XCI.

WHITE.

1. Q. to K. 6.
2. Kt. Mates.

BLACK.

1. Any Move.

XCII.

1. R. takes R. (ch.)
2. Q. to R. sq.
3. Mates.

1. K. takes R. (A)
2. Any Move.

(A.)

2. R. takes P. (ch.)
3. Mates.

1. K. to Kt. 2.
2. Any Move.

XCIII.

1. Kt. to K. 2.
2. R. to Kt. 2.
3. Kt. or B. Mates.

1. R. to R. 7 (best)
2. Any Move.

XCIV.

1. Q. takes Kt. (ch.)
2. Q. takes Kt.
3. Q. or R. Mates.

1. Q. to Q. 4 (best)
2. Any Move.

XCV.

1. P. to B. 2.
2. B. takes P. (ch.)
3. B. Mates.

1. P. to K. 6 (best.)
2. K. Moves.

XCVI.

WHITE.

1. R. to R. 4 (ch.)
2. B. to Q. Kt. 2.
3. R. to Q. 4 Mate.

BLACK.

1. B. takes R. (best.)
2. Any Move.

XCVII.

1. R. to K. 4.
2. B. to K. Kt. 4.
3. B. to K. 6 Mate.

1. P. to Q. 4 (A.)
2. P. takes R.

(A.)

2. R. to K. 5 (double ch.)
3. B. to Q. 5 Mate.

1. K. to Q. 4.
2. K. to B. 5.

XCVIII.

1. Q. to Q. 5 (ch.)
2. Kt. to Kt. 4 (ch.)
3. B. to B. 3 Mate.

1. K. takes Q. (A. B. C.)
2. K. Moves.

(A.)

2. B. to R. 5 (ch.)
3. Q. to Kt. 8 Mate.

1. K. to B. 2.
2. K. to B. sq.

(B.)

2. Q. takes Q. P. (ch.)
3. Q. takes Kt. Mate.

1. K. to Kt. 3.
2. K. to Kt. 4.

(C.)

2. P. to R. 4 (ch.)
3. Q. to P. Mate.

1. K. to Kt. 4.
2. K. to Kt. 3.

XCIX.

WHITE.

1. Kt. to B. 2.
2. B. to Q. 3.
3. B. or P. Mates.

BLACK.

1. P. Queens, (best)
2. Any Move.

C.

1. R. to Q. Kt. 2.
2. B. to Q. 5.
3. R. to Q. 2 Mate.

1. K. to Q. 6 (A.)
2. K. to Q. 5.

(A.)

2. R. to Q. 2 (ch.)
3. B. to R. 6 Mate.

1. K. to Q. 5.
2. K. to B. 5.

CI.

1. R. to K. B. 5.
2. P. to K. B. 4.
3. B. to B. 2 Mate.

1. K. takes R. (best)
2. Any Move.

CII.

1. Q. to Q. R. 8.
2. Q. to K. R. sq.
3. Q. Mates.

1. P. to R. 4 (A.)
2. Any Move.

(A.)

2. Q. to Q. 5.
3. Mates.

1. K. to R. 4.
2. Any Move.

CIII.

WHITE.

1. Kt. to Kt. 8.
2. R. takes R.
3. R. Mates.

BLACK.

1. R. to B. 5 (best)
2. Any Move.

CIV.

1. Q. to K. R. sq.
2. Q. takes P. (ch.)
3. B. to K. 4 Mate.

1. Kt. takes P. (A.)
2. K. takes Q.

(A.)

2. Q. to R. 7 (ch.)
3. Q Mates.

1. K. to Q. 2.
2. Any Move.

CV.

1. Kt. to Q. 7.
2. K. to K. 3.
3. B. Mates.

1. P. to Q. 6 (ch.) (A.)
2. Any Move.

(A.)

2. B. to K. 6 (ch.)
3. Kt. to K. B. 6, Mate.

1. P. to B. 3 or 5.
2. K. to K. 5.

CVI.

1. B. to Kt. 5.
2. Kt. to B. 8 (ch.)
3. B. Mates.

1. Moves.
2. Moves.

CVII.

WHITE.

1. Q. takes R. (ch.)
2. Q. to K. sq. (ch.)
3. Kt. Mates.

BLACK.

1. K. to B. 7 (best.)
2. K. takes Q.

CVIII.

1. Kt. to Q. 6 (ch.)
2. Kt. to K. B. 7 (ch.)
3. B. to Kt. 7, Mate.

1. K. Moves.
2. Moves.

CIX.

1. B. to B. sq.
2. P. to B. 3 (ch.)
3. B. Mates.

1. K to K. 5 (A.)
2. K. to Q. 5.

(A.)

2. B. to B. 6 (ch.)
3. P. to B. 3, Mate.

1. P. to Kt. 8, Queen.
2. K. Moves.

CX.

1. P. to B. 4.
2. K. to B. 2.
3. Kt. to B. 3, Mate.

1. K. to R. 5.
2. P. to R. 4.

CXI.

1. Kt. to K. 2.
2. Kt. to B. 2 (ch.)
3. B. Mates.

1. Any Move.
2. Any Move.

CXII.

WHITE.

1. B. to R. 4 (ch.)
2. R. to Q. 7 (ch.)
3. R. or B. Mates.

BLACK.

1. K. to Q. 6 or 7, (A)
2. Moves.

(A)

2. R. to B. sq. (ch.)
3. R. Mates.

1. K. to B. 8.
2. Moves.

CXIII.

1. B. to R. 4.
2. R. to Q. B. 3.
3. B. Mates.

1. K. Moves.
2. K. Moves.

CXIV.

1. B. to Kt. 5.
2. Kt. to K. 3 (ch.)
3. K. takes B.
4. Mates.

1. P. takes P. (best.)
2. B. takes Kt.
3. Any Move.

CXV.

1. B. takes K. P.
2. P. takes R.
3. R. to R. 8.
4. R. or B. Mates.

1. R. to Kt. 3, (ch.) (A.)
2. Moves.
3. Moves.

(A.)

2. R. to R. 8.
3. P. takes R.
4. R. or B. Mates.

1. P. to B. 4.
2. R. to Kt. 3. (ch.)
3. Any Move.

CXVI.

	WHITE.	BLACK.
1.	Kt. to Q. 2.	
2.	Kt. to Q. B.	
3.	Kt. to Kt.	
4.	Kt. to R. 2.	
5.	Kt. to R. 3.	
6.	Kl. to Kt. 4.	
7.	Kt. to Kt. 5.	
8.	Kt. to R. 6.	
9.	Kt. to R. 7.	
10.	Kt. to Kt. 8.	
11.	Kt. to B. 8.	
12.	Kt. to Q. 7.	
13.	Kt. to K. 7.	
14.	K. to Kt. 3, Mate.	

A FEW WORDS OF ADVICE.

PROBLEM XLVIII.

Add White Pawn at Q. 6, and Black Pawn at Black Q. 4. This problem was originally published in the "*Missouri Democrat*," but a recent examination shows that, as printed, the mate cannot be accomplished.

PROBLEM LVI.

Add a White Pawn on White Q. B. 6.

PROBLEM CXIV.

Remove Black Pawn at K. B. 5.

SOLUTION XVII. Read 1. R. to B. 6.

" XLVIII. Read 1. Q. takes P. (ch.)

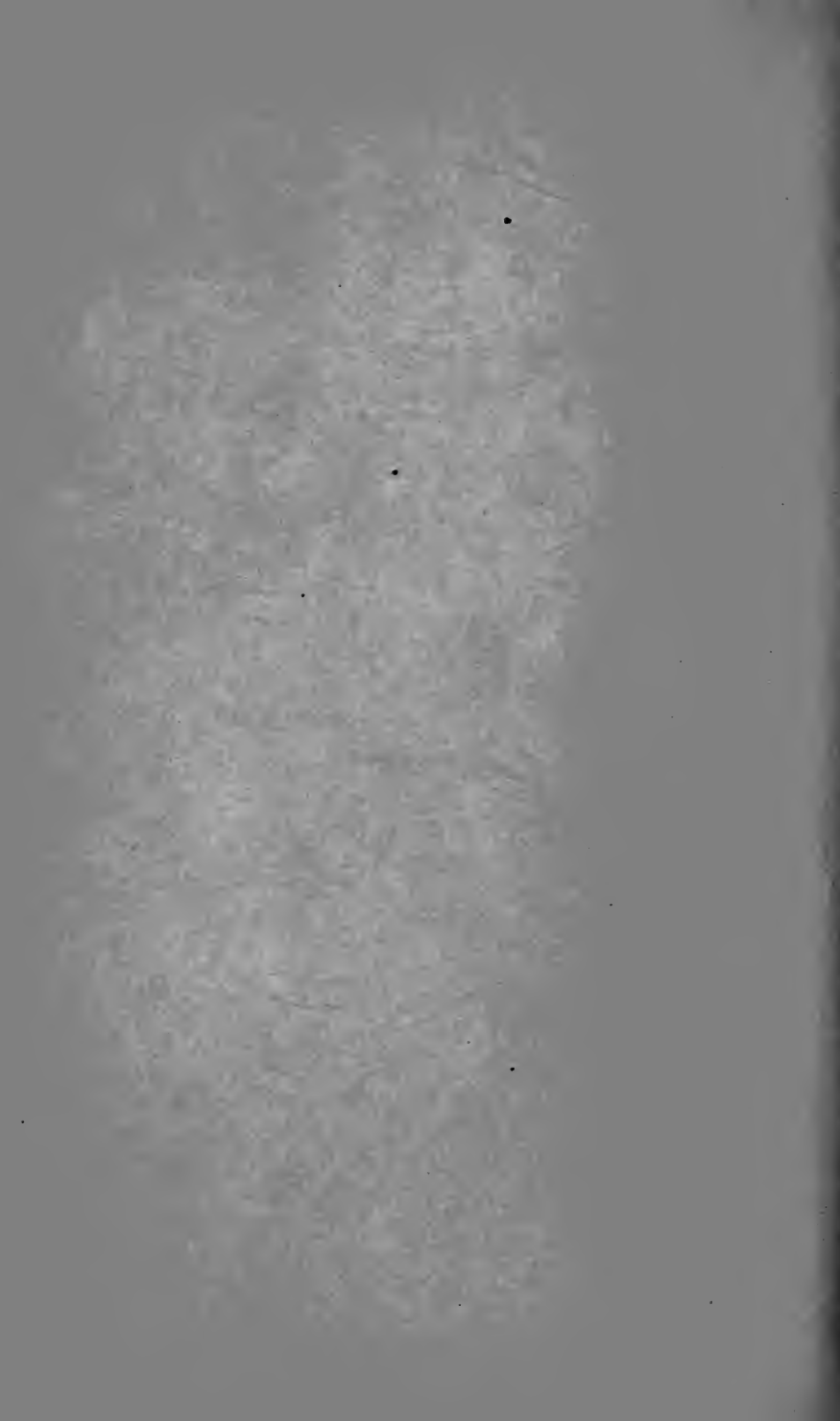
" LXXII. Read 1. Kt. to K. 5.

" LXXXVI. Read 1. Kt. to R. 6.

" LXXXVIII. Read 2. Kt. to B. 8, Mate.

" XCVIII. (c.) Read 3. Q. takes P. Mate.











LIBRARY OF CONGRESS



0 029 726 848 A